

Datasheet for ABIN2856815  
**anti-Pyruvate Kinase antibody (Center)**

5 Images

[Go to Product page](#)

## Overview

Quantity:	100 µL
Target:	Pyruvate Kinase (PK)
Binding Specificity:	Center
Reactivity:	Human, Rat
Host:	Rabbit
Clonality:	Polyclonal
Application:	Western Blotting (WB), Immunofluorescence (IF), Immunohistochemistry (Paraffin-embedded Sections) (IHC (p)), Immunocytochemistry (ICC)

## Product Details

Immunogen:	Recombinant protein encompassing a sequence within the center region of human Pyruvate Kinase (liver/RBC). The exact sequence is proprietary.
Isotype:	IgG
Specificity:	This antibody is raised against the R-Type isoform. Based on a BLAST result, it may also react with the L-Type isoform.
Characteristics:	Rabbit Polyclonal antibody to Pyruvate Kinase (liver/RBC) (pyruvate kinase, liver and RBC) Pyruvate Kinase (liver/RBC) antibody
Purification:	Purified by antigen-affinity chromatography.

## Target Details

Target:	Pyruvate Kinase (PK)
---------	----------------------

## Target Details

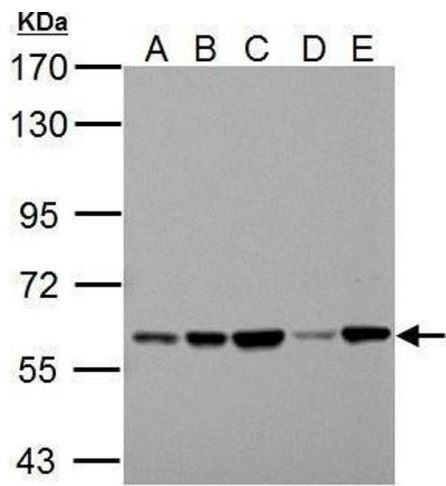
Alternative Name:	Pyruvate Kinase ( <a href="#">PK Products</a> )
Background:	<p>The protein encoded by this gene is a pyruvate kinase that catalyzes the transphosphorylation of phosphoenolpyruvate into pyruvate and ATP, which is the rate-limiting step of glycolysis.</p> <p>Defects in this enzyme, due to gene mutations or genetic variations, are the common cause of chronic hereditary nonspherocytic hemolytic anemia (CNSHA or HNSHA). Multiple transcript variants encoding different isoforms have been found for this gene.</p>
Molecular Weight:	62 kDa
Gene ID:	5313

## Application Details

Application Notes:	<p>Suggested dilution Reference ICC/IF 1:100-1:1000* IHC (Formalin-fixed paraffin-embedded sections) 1:100-1:1000* Western blot 1:1000-1:10000* Not tested in other applications.</p> <p>*Optimal dilutions/concentrations should be determined by the researcher.Suggested dilutionReferenceICC/IF1:100-1:1000* IHC (Formalin-fixed paraffin-embedded sections)1:100-1:1000* Western blot1:1000-1:10000*</p>
Comment:	Positive Control: 293T , A431 , HeLa , HepG2 , A375 , rat liver
Restrictions:	For Research Use only

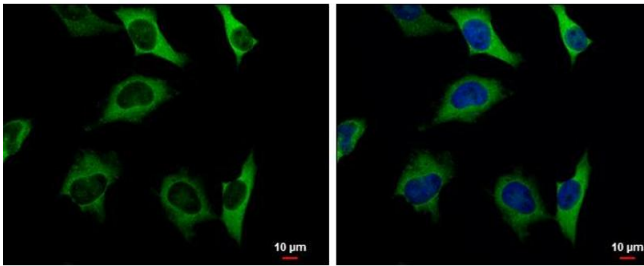
## Handling

Format:	Liquid
Concentration:	1 mg/mL
Buffer:	0.1M Tris, 0.1M Glycine, 10 % Glycerol ( pH 7). 0.01 % Thimerosal was added as a preservative.
Preservative:	Thimerosal (Merthiolate)
Precaution of Use:	This product contains Thimerosal (Merthiolate): a POISONOUS AND HAZARDOUS SUBSTANCE which should be handled by trained staff only.
Storage:	-20 °C
Storage Comment:	Keep as concentrated solution. Aliquot and store at -20°C or below. Avoid multiple freeze-thaw cycles.



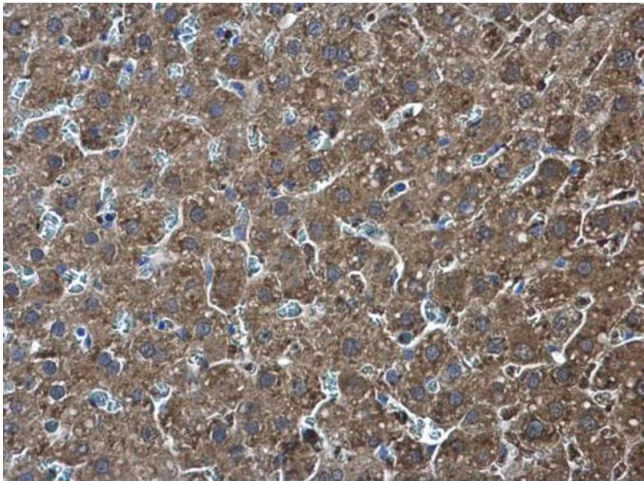
Western Blotting

**Image 1.** WB Image Sample (30 ug of whole cell lysate) A: 293T B: A431 C: HeLa D: HepG2 E: A375 7.5% SDS PAGE antibody diluted at 1:1000



Immunofluorescence

**Image 2.** ICC/IF Image Pyruvate Kinase (liver/RBC) antibody detects Pyruvate Kinase (liver/RBC) protein at cytoplasm by immunofluorescent analysis. Sample: HeLa cells were fixed in 4% paraformaldehyde at RT for 15 min. Green: Pyruvate Kinase (liver/RBC) protein stained by Pyruvate Kinase (liver/RBC) antibody , diluted at 1:500. Blue: Hoechst 33342 staining. Scale bar = 10 µm.



Immunohistochemistry

**Image 3.** IHC-P Image Pyruvate Kinase (liver/RBC) antibody detects Pyruvate Kinase (liver/RBC) protein at cytoplasm in rat liver by immunohistochemical analysis. Sample: Paraffin-embedded rat liver. Pyruvate Kinase (liver/RBC) antibody , diluted at 1:500.

Please check the [product details page](#) for more images. Overall 5 images are available for ABIN2856815.