

## Datasheet for ABIN2856817 **anti-PKN2 antibody**

### 3 Images



[Go to Product page](#)

### Overview

Quantity:	100 µL
Target:	PKN2
Reactivity:	Human
Host:	Rabbit
Clonality:	Polyclonal
Conjugate:	This PKN2 antibody is un-conjugated
Application:	Western Blotting (WB), Immunofluorescence (IF), Immunocytochemistry (ICC), Immunohistochemistry (Paraffin-embedded Sections) (IHC (p))

### Product Details

Immunogen:	Recombinant protein encompassing a sequence within the center region of human PKN2. The exact sequence is proprietary.
Isotype:	IgG
Cross-Reactivity:	Human
Characteristics:	Rabbit polyclonal antibody to protein kinase N2 (protein kinase N2) PRK2 antibody [N1N3]
Purification:	Purified by antigen-affinity chromatography.

### Target Details

Target:	PKN2
Alternative Name:	protein kinase N2 ( <a href="#">PKN2 Products</a> )

## Target Details

---

Background: Exhibits a preference for highly basic protein substrates.

Cellular Localization: Cytoplasm

Molecular Weight: 112 kDa

Gene ID: 5586

UniProt: [Q16513](#)

Pathways: [Cell-Cell Junction Organization](#)

## Application Details

---

Application Notes: WB: 1:500-1:3000. ICC/IF: 1:100-1:1000. IHC-P: 1:100-1:1000. Optimal dilutions/concentrations should be determined by the researcher. Not tested in other applications.

Comment: Positive Control: H1299

Restrictions: For Research Use only

## Handling

---

Format: Liquid

Concentration: 0.93 mg/mL

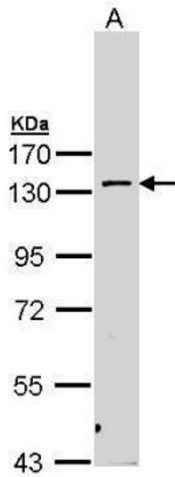
Buffer: 0.1M Tris-Glycine ( pH 7), 10 % Glycerol, 0.01 % Thimerosal

Preservative: Thimerosal (Merthiolate)

Precaution of Use: This product contains Thimerosal (Merthiolate): a POISONOUS AND HAZARDOUS SUBSTANCE which should be handled by trained staff only.

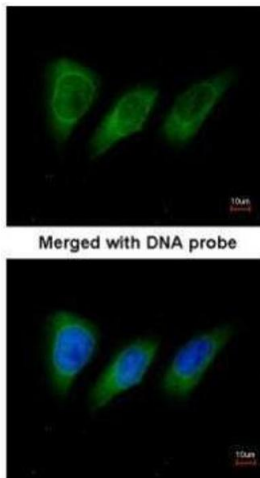
Storage: 4 °C, -20 °C

Storage Comment: Store as concentrated solution. Centrifuge briefly prior to opening vial. For short-term storage (1-2 weeks), store at 4°C. For long-term storage, aliquot and store at -20°C or below. Avoid multiple freeze-thaw cycles.



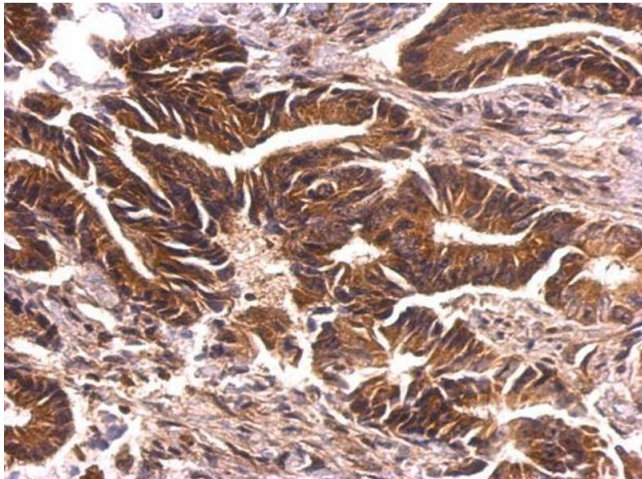
### Western Blotting

**Image 1.** WB Image Sample (30 ug of whole cell lysate) A:  
H1299 7.5% SDS PAGE antibody diluted at 1:1000



### Immunofluorescence

**Image 2.** ICC/IF Image Immunofluorescence analysis of paraformaldehyde-fixed HeLa, using protein kinase N2, antibody at 1:200 dilution.



### Immunohistochemistry

**Image 3.** IHC-P Image PRK2 antibody [N1N3] detects PRK2 protein at cytosol on human colon carcinoma by immunohistochemical analysis. Sample: Paraffin-embedded human colon carcinoma. PRK2 antibody [N1N3], dilution: 1:500.