

Datasheet for ABIN2856821

**anti-PDE1A antibody****2** Images[Go to Product page](#)

## Overview

Quantity:	100 µL
Target:	PDE1A
Reactivity:	Human
Host:	Rabbit
Clonality:	Polyclonal
Conjugate:	This PDE1A antibody is un-conjugated
Application:	Immunohistochemistry (Paraffin-embedded Sections) (IHC (p)), Western Blotting (WB)

## Product Details

Immunogen:	Recombinant protein encompassing a sequence within the center region of human PDE1A. The exact sequence is proprietary.
Isotype:	IgG
Cross-Reactivity:	Human, Mouse, Rat
Characteristics:	Rabbit Polyclonal antibody to PDE1A (calcium/calmodulin-dependent 3',5'-cyclic nucleotide phosphodiesterase 1A) PDE1A antibody
Purification:	Purified by antigen-affinity chromatography.

## Target Details

Target:	PDE1A
Alternative Name:	phosphodiesterase 1A ( <a href="#">PDE1A Products</a> )

## Target Details

**Background:** Cyclic nucleotide phosphodiesterases (PDEs) play a role in signal transduction by regulating intracellular cyclic nucleotide concentrations through hydrolysis of cAMP and/or cGMP to their respective nucleoside 5-prime monophosphates. Members of the PDE1 family, such as PDE1A, are Ca(2+)/calmodulin (see CALM1, MIM 114180)-dependent PDEs (CaM-PDEs) that are activated by calmodulin in the presence of Ca(2+) (Michibata et al., 2001 [PubMed 11342109], Fidock et al., 2002 [PubMed 11747989]).[supplied by OMIM]

**Molecular Weight:** 61 kDa

**Gene ID:** 5136

**UniProt:** [P54750](#)

## Application Details

**Application Notes:** WB: 1:500-1:3000. IHC-P: 1:100-1:1000. Optimal dilutions/concentrations should be determined by the researcher. Not tested in other applications.

**Comment:** Positive Control: H1299 , HeLa , mouse brain , rat brain

**Restrictions:** For Research Use only

## Handling

**Format:** Liquid

**Concentration:** 0.74 mg/mL

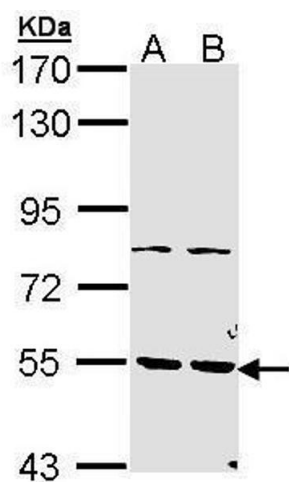
**Buffer:** 0.1M Tris-Glycine ( pH 7), 10 % Glycerol, 0.01 % Thimerosal

**Preservative:** Thimerosal (Merthiolate)

**Precaution of Use:** This product contains Thimerosal (Merthiolate): a POISONOUS AND HAZARDOUS SUBSTANCE which should be handled by trained staff only.

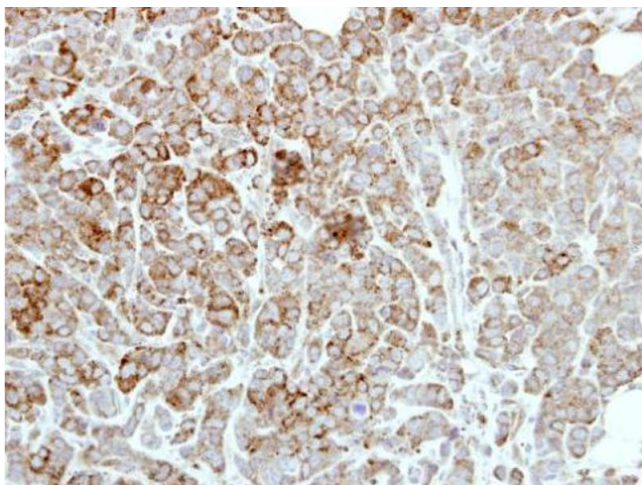
**Storage:** 4 °C, -20 °C

**Storage Comment:** Store as concentrated solution. Centrifuge briefly prior to opening vial. For short-term storage (1-2 weeks), store at 4°C. For long-term storage, aliquot and store at -20°C or below. Avoid multiple freeze-thaw cycles.



### Western Blotting

**Image 1.** WB Image Sample (30 ug of whole cell lysate) A: H1299 B: Hela 7.5% SDS PAGE antibody diluted at 1:1000



### Immunohistochemistry

**Image 2.** IHC-P Image Immunohistochemical analysis of paraffin-embedded MDAMB468 xenograft, using PDE1A, antibody at 1:500 dilution.