



[Go to Product page](#)

Datasheet for ABIN2856825
anti-CKS2 antibody (C-Term)

2 Images

Overview

Quantity:	100 µL
Target:	CKS2
Binding Specificity:	C-Term
Reactivity:	Human
Host:	Rabbit
Clonality:	Polyclonal
Conjugate:	This CKS2 antibody is un-conjugated
Application:	Western Blotting (WB), Immunofluorescence (IF), Immunocytochemistry (ICC)

Product Details

Immunogen:	Carrier-protein conjugated synthetic peptide encompassing a sequence within the C-terminus region of human CKS-2. The exact sequence is proprietary.
Isotype:	IgG
Cross-Reactivity:	Mouse (Murine), Rat (Rattus), Zebrafish (Danio rerio), Xenopus laevis, Xenopus tropicalis, Rhesus Monkey, Cow (Bovine)
Cross-Reactivity (Details):	Mouse (93 %), Rat (93 %), Zebrafish (92 %), Xenopus laevis (100 %), Xenopus Tropicalis (93 %), Rhesus Monkey (100 %), Bovine (100 %)
Characteristics:	Rabbit polyclonal antibody to CKS-2 (CDC28 protein kinase regulatory subunit 2) CKS-2 antibody [N2C3]
Purification:	Purified by antigen-affinity chromatography.

Target Details

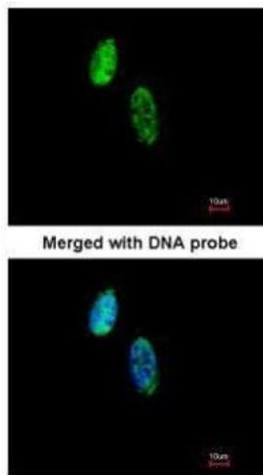
Target:	CKS2
Alternative Name:	CKS-2 (CKS2 Products)
Background:	CKS2 protein binds to the catalytic subunit of the cyclin dependent kinases and is essential for their biological function. The CKS2 mRNA is found to be expressed in different patterns through the cell cycle in HeLa cells, which reflects specialized role for the encoded protein.
Molecular Weight:	10 kDa
Gene ID:	1164

Application Details

Application Notes:	Suggested dilution Reference ICC/IF 1:100-1:1000* Western blot 1:500-1:3000* Not tested in other applications. *Optimal dilutions/concentrations should be determined by the researcher.Suggested dilutionReferenceICC/IF1:100-1:1000* Western blot1:500-1:3000*
Comment:	Positive Control: 293T , A431 , HeLa , HepG2 , Molt-4 , Raji
Restrictions:	For Research Use only

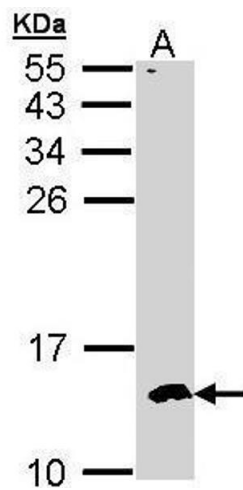
Handling

Format:	Liquid
Concentration:	1 mg/mL
Buffer:	0.1M Tris, 0.1M Glycine, 10 % Glycerol (pH 7). 0.01 % Thimerosal was added as a preservative.
Preservative:	Thimerosal (Merthiolate)
Precaution of Use:	This product contains Thimerosal (Merthiolate): a POISONOUS AND HAZARDOUS SUBSTANCE which should be handled by trained staff only.
Storage:	-20 °C
Storage Comment:	Keep as concentrated solution. Aliquot and store at -20°C or below. Avoid multiple freeze-thaw cycles.



Immunofluorescence

Image 1. ICC/IF Image Immunofluorescence analysis of paraformaldehyde-fixed HeLa, using CKS-2, antibody at 1:500 dilution.



Western Blotting

Image 2. WB Image Sample (30 ug of whole cell lysate) A: Hep G2 , 15% SDS PAGE antibody diluted at 1:500