

Datasheet for ABIN2856828
anti-BCL2L10 antibody

3 Images

[Go to Product page](#)

Overview

Quantity:	100 µL
Target:	BCL2L10
Reactivity:	Human
Host:	Rabbit
Clonality:	Polyclonal
Conjugate:	This BCL2L10 antibody is un-conjugated
Application:	Western Blotting (WB), Immunocytochemistry (ICC), Immunofluorescence (IF), Immunohistochemistry (Paraffin-embedded Sections) (IHC (p))

Product Details

Immunogen:	Carrier-protein conjugated synthetic peptide encompassing a sequence within the center region of human BCL2L10. The exact sequence is proprietary.
Isotype:	IgG
Cross-Reactivity:	Human
Characteristics:	Rabbit polyclonal antibody to BCL2L10 (BCL2-like 10 (apoptosis facilitator)) BCL2L10 antibody [N2C2], Internal
Purification:	Purified by antigen-affinity chromatography.

Target Details

Target:	BCL2L10
Alternative Name:	BCL2 like 10 (BCL2L10 Products)

Target Details

Background: The protein encoded by this gene belongs to the BCL-2 protein family. BCL-2 family members form hetero- or homodimers and act as anti- or pro-apoptotic regulators that are involved in a wide variety of cellular activities. The protein encoded by this gene contains conserved BH4, BH1 and BH2 domains. This protein can interact with other members of BCL-2 protein family including BCL2, BCL2L1/BCL-X(L), and BAX. Overexpression of this gene has been shown to suppress cell apoptosis possibly through the prevention of cytochrome C release from the mitochondria, and thus activating caspase-3 activation. The mouse counterpart of this protein is found to interact with Apaf1 and forms a protein complex with Caspase 9, which suggests the involvement of this protein in APAF1 and CASPASE 9 related apoptotic pathway.

Cellular Localization: Mitochondrion , Nucleus membrane

Molecular Weight: 22 kDa

Gene ID: 10017

UniProt: [Q9HD36](#)

Pathways: [Positive Regulation of Endopeptidase Activity](#)

Application Details

Application Notes: WB: 1:500-1:3000. ICC/IF: 1:100-1:1000. IHC-P: 1:100-1:1000. Optimal dilutions/concentrations should be determined by the researcher. Not tested in other applications.

Restrictions: For Research Use only

Handling

Format: Liquid

Concentration: 1.32 mg/mL

Buffer: 1XPBS (pH 7), 20 % Glycerol, 0.025 % ProClin 300

Preservative: ProClin

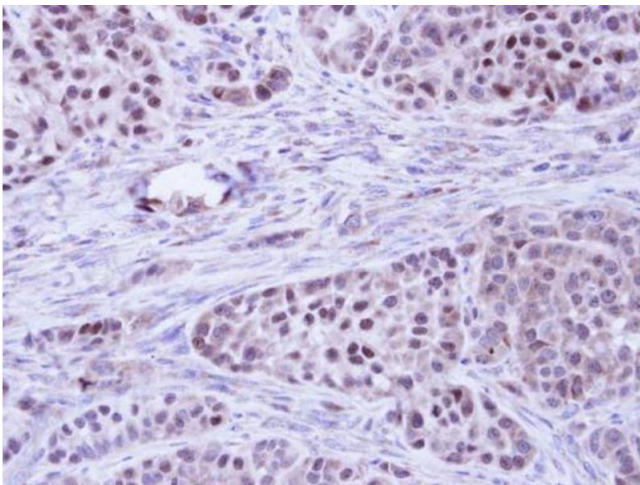
Precaution of Use: This product contains ProClin: a POISONOUS AND HAZARDOUS SUBSTANCE which should be handled by trained staff only.

Storage: 4 °C,-20 °C

Storage Comment: Store as concentrated solution. Centrifuge briefly prior to opening vial. For short-term storage (1-2 weeks), store at 4°C. For long-term storage, aliquot and store at -20°C or below. Avoid

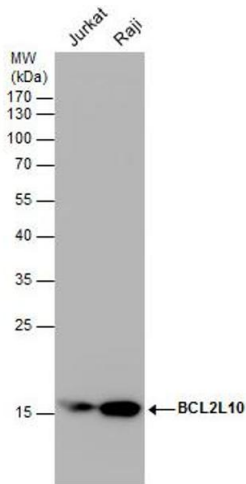
multiple freeze-thaw cycles.

Validation report #100014 for Immunofluorescence (IF)



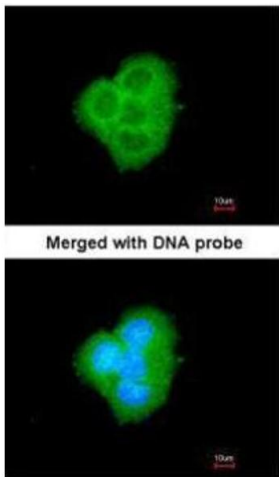
Immunohistochemistry

Image 1. IHC-P Image Immunohistochemical analysis of paraffin-embedded A549 Xenograft, using BCL2L10, antibody at 1:100 dilution.



Western Blotting

Image 2. WB Image Various whole cell extracts (30 µg) were separated by 12% SDS-PAGE, and the membrane was blotted with BCL2L10 antibody [N2C2], Internal , diluted at 1:1000.



Immunofluorescence

Image 3. ICC/IF Image Immunofluorescence analysis of paraformaldehyde-fixed A431, using BCL2L10, antibody at 1:200 dilution.