

Datasheet for ABIN2856833
anti-DPP8 antibody (N-Term)[Go to Product page](#)

2 Images

Overview

| | |
|----------------------|---|
| Quantity: | 100 µL |
| Target: | DPP8 |
| Binding Specificity: | N-Term |
| Reactivity: | Human |
| Host: | Rabbit |
| Clonality: | Polyclonal |
| Conjugate: | This DPP8 antibody is un-conjugated |
| Application: | Western Blotting (WB), Immunofluorescence (IF), Immunocytochemistry (ICC) |

Product Details

| | |
|-------------------|--|
| Immunogen: | Carrier-protein conjugated synthetic peptide encompassing a sequence within the N-terminus region of human DPRP1. The exact sequence is proprietary. |
| Isotype: | IgG |
| Cross-Reactivity: | Human |
| Characteristics: | Rabbit polyclonal antibody to DPRP1 (dipeptidyl-peptidase 8) DPRP1 antibody [N1], N-term |
| Purification: | Purified by antigen-affinity chromatography. |

Target Details

| | |
|---------|------|
| Target: | DPP8 |
|---------|------|

Target Details

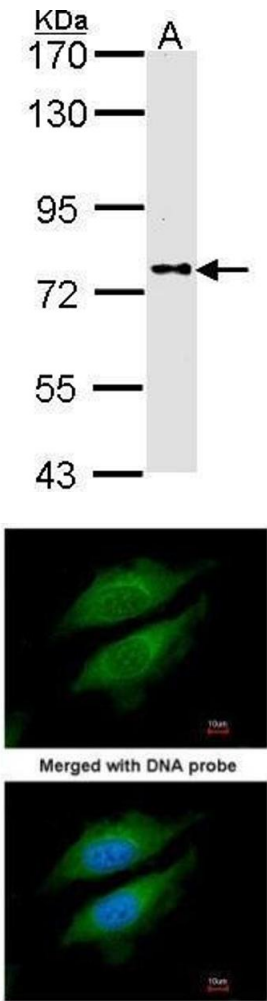
| | |
|-------------------|---|
| Alternative Name: | dipeptidyl peptidase 8 (DPP8 Products) |
| Background: | <p>This gene encodes a member of the peptidase S9B family, a small family of dipeptidyl peptidases that are able to cleave peptide substrates at a prolyl bond. The encoded protein shares similarity with dipeptidyl peptidase IV in that it is ubiquitously expressed, and hydrolyzes the same substrates. These similarities suggest that, like dipeptidyl peptidase IV, this protein may play a role in T-cell activation and immune function. Alternatively spliced transcript variants encoding different isoforms have been described.</p> <p>Cellular Localization: Cytoplasm</p> |
| Molecular Weight: | 103 kDa |
| Gene ID: | 54878 |
| UniProt: | Q6V1X1 |

Application Details

| | |
|--------------------|--|
| Application Notes: | WB: 1:500-1:3000. ICC/IF: 1:100-1:1000. Optimal dilutions/concentrations should be determined by the researcher. Not tested in other applications. |
| Comment: | Positive Control: A431 |
| Restrictions: | For Research Use only |

Handling

| | |
|--------------------|--|
| Format: | Liquid |
| Concentration: | 1 mg/mL |
| Buffer: | 0.1M Tris-Glycine (pH 7), 10 % Glycerol, 0.01 % Thimerosal |
| Preservative: | Thimerosal (Merthiolate) |
| Precaution of Use: | This product contains Thimerosal (Merthiolate): a POISONOUS AND HAZARDOUS SUBSTANCE which should be handled by trained staff only. |
| Storage: | 4 °C,-20 °C |
| Storage Comment: | Store as concentrated solution. Centrifuge briefly prior to opening vial. For short-term storage (1-2 weeks), store at 4°C. For long-term storage, aliquot and store at -20°C or below. Avoid multiple freeze-thaw cycles. |



Western Blotting

Image 1. WB Image Sample (30 ug of whole cell lysate) A: A431 , 7.5% SDS PAGE DPP8 antibody antibody diluted at 1:1000

Immunofluorescence

Image 2. ICC/IF Image Immunofluorescence analysis of paraformaldehyde-fixed HeLa, using DPRP1 , antibody at 1:200 dilution.