



[Go to Product page](#)

Datasheet for ABIN2856834
anti-TP53I3 antibody

3 Images

Overview

Quantity:	100 µL
Target:	TP53I3
Reactivity:	Human
Host:	Rabbit
Clonality:	Polyclonal
Conjugate:	This TP53I3 antibody is un-conjugated
Application:	Western Blotting (WB), Immunohistochemistry (Paraffin-embedded Sections) (IHC (p)), Immunocytochemistry (ICC), Immunofluorescence (IF)

Product Details

Immunogen:	Full length human PIG3 Recombinant protein.
Isotype:	IgG
Cross-Reactivity:	Human
Characteristics:	Rabbit Polyclonal antibody to PIG3 (tumor protein p53 inducible protein 3) PIG3 antibody [N1C3]
Purification:	Purified by antigen-affinity chromatography.

Target Details

Target:	TP53I3
Alternative Name:	tumor protein p53 inducible protein 3 (TP53I3 Products)

Target Details

Molecular Weight: 36 kDa

Gene ID: 9540

UniProt: [Q53FA7](#)

Pathways: [p53 Signaling](#)

Application Details

Application Notes: WB: 1:500-1:3000. ICC/IF: 1:100-1:1000. IHC-P: 1:100-1:1000. Optimal dilutions/concentrations should be determined by the researcher. Not tested in other applications.

Comment: Positive Control: HepG2

Restrictions: For Research Use only

Handling

Format: Liquid

Concentration: 1 mg/mL

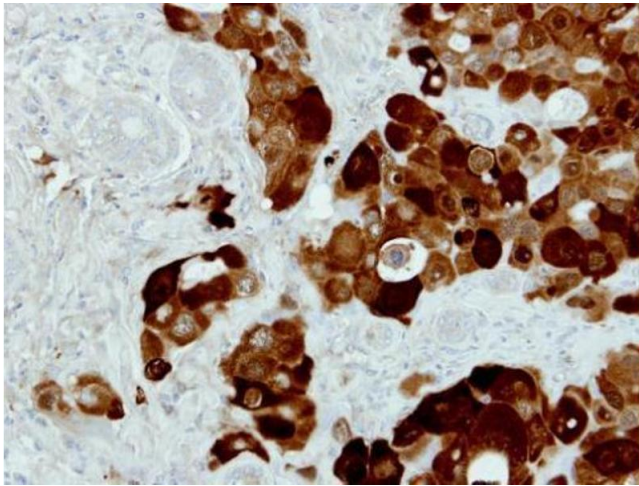
Buffer: 0.1M Tris-Glycine (pH 7), 10 % Glycerol, 0.01 % Thimerosal

Preservative: Thimerosal (Merthiolate)

Precaution of Use: This product contains Thimerosal (Merthiolate): a POISONOUS AND HAZARDOUS SUBSTANCE which should be handled by trained staff only.

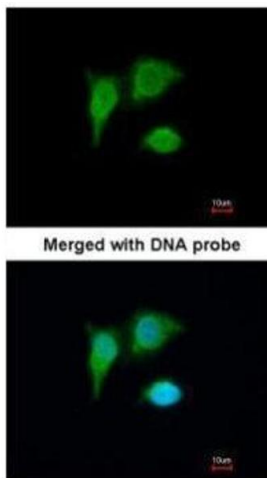
Storage: 4 °C, -20 °C

Storage Comment: Store as concentrated solution. Centrifuge briefly prior to opening vial. For short-term storage (1-2 weeks), store at 4°C. For long-term storage, aliquot and store at -20°C or below. Avoid multiple freeze-thaw cycles.



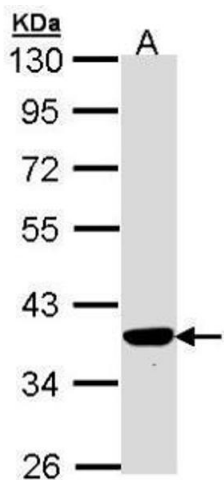
Immunohistochemistry

Image 1. IHC-P Image Immunohistochemical analysis of paraffin-embedded H441 xenograft, using PIG3, antibody at 1:500 dilution.



Immunofluorescence

Image 2. ICC/IF Image Immunofluorescence analysis of paraformaldehyde-fixed A549, using PIG3, antibody at 1:200 dilution.



Western Blotting

Image 3. WB Image Sample (30 ug of whole cell lysate) A: Hep G2, 10% SDS PAGE antibody diluted at 1:1000