



[Go to Product page](#)

Datasheet for ABIN2856836
anti-SMC1B antibody (N-Term)

3 Images

Overview

Quantity:	100 µL
Target:	SMC1B
Binding Specificity:	N-Term
Reactivity:	Human
Host:	Rabbit
Clonality:	Polyclonal
Application:	Western Blotting (WB), Immunofluorescence (IF), Immunohistochemistry (Paraffin-embedded Sections) (IHC (p)), Immunocytochemistry (ICC)

Product Details

Immunogen:	Recombinant protein encompassing a sequence within the N-terminus region of human SMC1B. The exact sequence is proprietary.
Isotype:	IgG
Cross-Reactivity:	Human
Characteristics:	Rabbit Polyclonal antibody to SMC1B (structural maintenance of chromosomes 1B) SMC1B antibody [N1N3]
Purification:	Purified by antigen-affinity chromatography.

Target Details

Target:	SMC1B
Alternative Name:	structural maintenance of chromosomes 1B (SMC1B Products)

Target Details

Molecular Weight: 144 kDa

Gene ID: 27127

UniProt: [Q8NDV3](#)

Application Details

Application Notes: WB: 1:500-1:3000. ICC/IF: 1:100-1:1000. IHC-P: 1:100-1:1000. Optimal dilutions/concentrations should be determined by the researcher. Not tested in other applications.

Comment: Positive Control: HeLa

Restrictions: For Research Use only

Handling

Format: Liquid

Concentration: 1 mg/mL

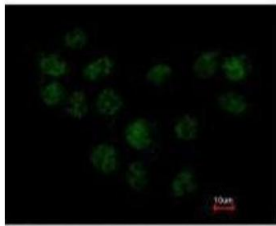
Buffer: 0.1M Tris-Glycine (pH 7), 10 % Glycerol, 0.01 % Thimerosal

Preservative: Thimerosal (Merthiolate)

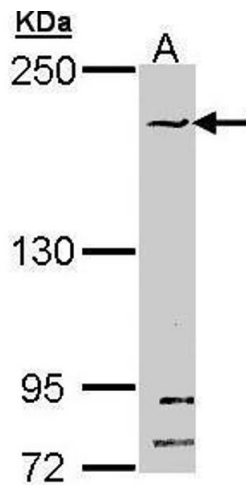
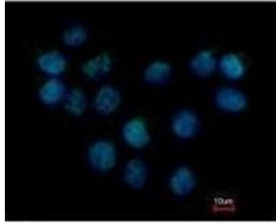
Precaution of Use: This product contains Thimerosal (Merthiolate): a POISONOUS AND HAZARDOUS SUBSTANCE which should be handled by trained staff only.

Storage: 4 °C, -20 °C

Storage Comment: Store as concentrated solution. Centrifuge briefly prior to opening vial. For short-term storage (1-2 weeks), store at 4°C. For long-term storage, aliquot and store at -20°C or below. Avoid multiple freeze-thaw cycles.



Costained with Hoechst 33342

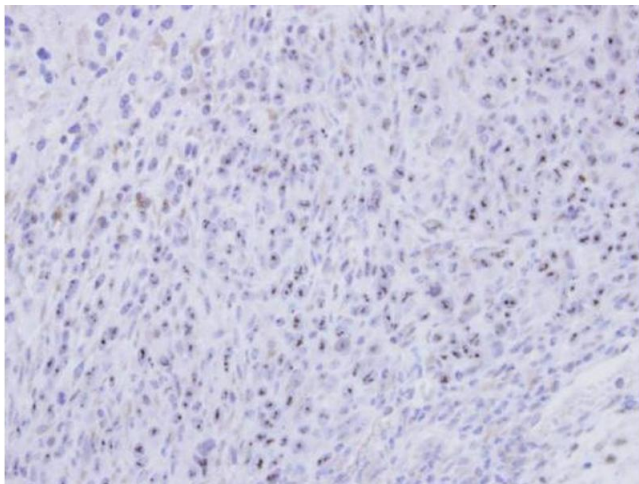


Immunofluorescence

Image 1. ICC/IF Image Immunofluorescence analysis of paraformaldehyde-fixed A431, using SMC1B, antibody at 1:500 dilution.

Western Blotting

Image 2. WB Image Sample (30 ug of whole cell lysate) A: HeLa 5% SDS PAGE antibody diluted at 1:1000



Immunohistochemistry

Image 3. IHC-P Image Immunohistochemical analysis of paraffin-embedded SAS xenograft, using SMC1B, antibody at 1:500 dilution.