

Datasheet for ABIN2856838

anti-GMFB antibody**2** Images[Go to Product page](#)

Overview

Quantity:	100 µL
Target:	GMFB
Reactivity:	Human
Host:	Rabbit
Clonality:	Polyclonal
Conjugate:	This GMFB antibody is un-conjugated
Application:	Western Blotting (WB), Immunohistochemistry (Paraffin-embedded Sections) (IHC (p))

Product Details

Immunogen:	Full length human GMF beta Recombinant protein.
Isotype:	IgG
Cross-Reactivity:	Human, Mouse, Rat
Characteristics:	Rabbit Polyclonal antibody to GMF beta (glia maturation factor, beta) GMF beta antibody [N1C3]
Purification:	Purified by antigen-affinity chromatography.

Target Details

Target:	GMFB
Alternative Name:	glia maturation factor beta (GMFB Products)
Molecular Weight:	17 kDa

Target Details

Gene ID: 2764

UniProt: [P60983](#)

Application Details

Application Notes: WB: 1:500-1:3000. IHC-P: 1:100-1:1000. Optimal dilutions/concentrations should be determined by the researcher. Not tested in other applications.

Comment: Positive Control: Raji , mouse brain , rat brain

Restrictions: For Research Use only

Handling

Format: Liquid

Concentration: 1 mg/mL

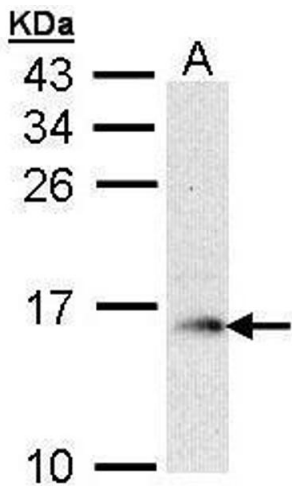
Buffer: 0.1M Tris-Glycine (pH 7), 10 % Glycerol, 0.01 % Thimerosal

Preservative: Thimerosal (Merthiolate)

Precaution of Use: This product contains Thimerosal (Merthiolate): a POISONOUS AND HAZARDOUS SUBSTANCE which should be handled by trained staff only.

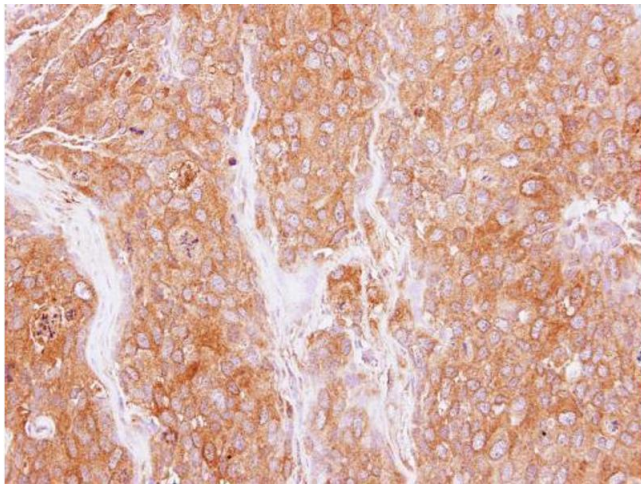
Storage: 4 °C, -20 °C

Storage Comment: Store as concentrated solution. Centrifuge briefly prior to opening vial. For short-term storage (1-2 weeks), store at 4°C. For long-term storage, aliquot and store at -20°C or below. Avoid multiple freeze-thaw cycles.



Western Blotting

Image 1. WB Image Sample (30 ug of whole cell lysate) A:
Raji 15% SDS PAGE antibody diluted at 1:1000



Immunohistochemistry

Image 2. IHC-P Image Immunohistochemical analysis of
paraffin-embedded BT474 xenograft, using GMF beta,
antibody at 1:500 dilution.