

Datasheet for ABIN2856839

anti-PRPS1L1 antibody**2** Images[Go to Product page](#)

Overview

Quantity:	100 µL
Target:	PRPS1L1
Reactivity:	Human
Host:	Rabbit
Clonality:	Polyclonal
Conjugate:	This PRPS1L1 antibody is un-conjugated
Application:	Western Blotting (WB), Immunocytochemistry (ICC), Immunofluorescence (IF)

Product Details

Immunogen:	Full length human PRPS1L1 Recombinant protein.
Isotype:	IgG
Cross-Reactivity:	Human
Characteristics:	Rabbit Polyclonal antibody to PRPS1L1 (phosphoribosyl pyrophosphate synthetase 1-like 1) PRPS1L1 antibody
Purification:	Purified by antigen-affinity chromatography.

Target Details

Target:	PRPS1L1
Alternative Name:	phosphoribosyl pyrophosphate synthetase 1 like 1 (PRPS1L1 Products)
Molecular Weight:	35 kDa

Target Details

Gene ID: 221823

UniProt: [P21108](#)

Application Details

Application Notes: WB: 1:500-1:3000. ICC/IF: 1:100-1:1000. Optimal dilutions/concentrations should be determined by the researcher. Not tested in other applications.

Comment: Positive Control: Molt-4

Restrictions: For Research Use only

Handling

Format: Liquid

Concentration: 1 mg/mL

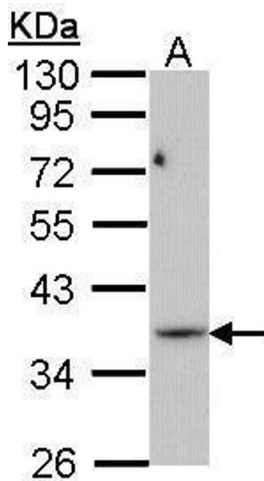
Buffer: 0.1M Tris-Glycine (pH 7), 10 % Glycerol, 0.01 % Thimerosal

Preservative: Thimerosal (Merthiolate)

Precaution of Use: This product contains Thimerosal (Merthiolate): a POISONOUS AND HAZARDOUS SUBSTANCE which should be handled by trained staff only.

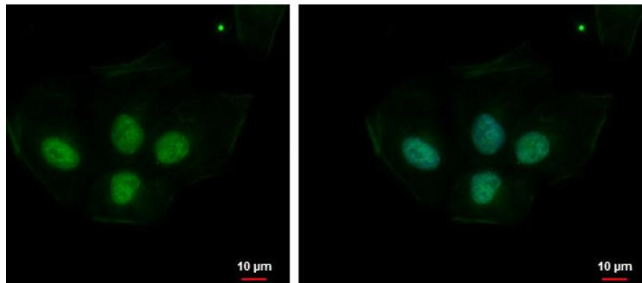
Storage: 4 °C, -20 °C

Storage Comment: Store as concentrated solution. Centrifuge briefly prior to opening vial. For short-term storage (1-2 weeks), store at 4°C. For long-term storage, aliquot and store at -20°C or below. Avoid multiple freeze-thaw cycles.



Western Blotting

Image 1. WB Image Sample (30 ug of whole cell lysate) A: Molt-4 , 10% SDS PAGE antibody diluted at 1:1000



Immunofluorescence

Image 2. ICC/IF Image PRPS1L1 antibody detects PRPS1L1 protein at nucleus by immunofluorescent analysis. Sample: NT2D1 cells were fixed in 4% paraformaldehyde at RT for 15 min. Green: PRPS1L1 protein stained by PRPS1L1 antibody , diluted at 1:500. Blue: Hoechst 33342 staining. Scale bar = 10 µm.