

Datasheet for ABIN2856844
anti-AEN antibody (C-Term)



[Go to Product page](#)

3 Images

Overview

Quantity:	100 µL
Target:	AEN
Binding Specificity:	C-Term
Reactivity:	Human
Host:	Rabbit
Clonality:	Polyclonal
Conjugate:	This AEN antibody is un-conjugated
Application:	Western Blotting (WB), Immunofluorescence (IF), Immunohistochemistry (Paraffin-embedded Sections) (IHC (p)), Immunocytochemistry (ICC)

Product Details

Immunogen:	Carrier-protein conjugated synthetic peptide encompassing a sequence within the C-terminus region of human Apoptosis-enhancing nuclease. The exact sequence is proprietary.
Isotype:	IgG
Cross-Reactivity:	Human
Characteristics:	Rabbit polyclonal antibody to Apoptosis-enhancing nuclease (apoptosis enhancing nuclease) Apoptosis-enhancing nuclease antibody [C2C3], C-term
Purification:	Purified by antigen-affinity chromatography.

Target Details

Target:	AEN
---------	-----

Target Details

Alternative Name: apoptosis enhancing nuclease ([AEN Products](#))

Molecular Weight: 36 kDa

Gene ID: 64782

UniProt: [Q8WTP8](#)

Application Details

Application Notes: WB: 1:500-1:3000. ICC/IF: 1:100-1:1000. IHC-P: 1:100-1:1000. Optimal dilutions/concentrations should be determined by the researcher. Not tested in other applications.

Comment: Positive Control: HeLa

Restrictions: For Research Use only

Handling

Format: Liquid

Concentration: 0.9 mg/mL

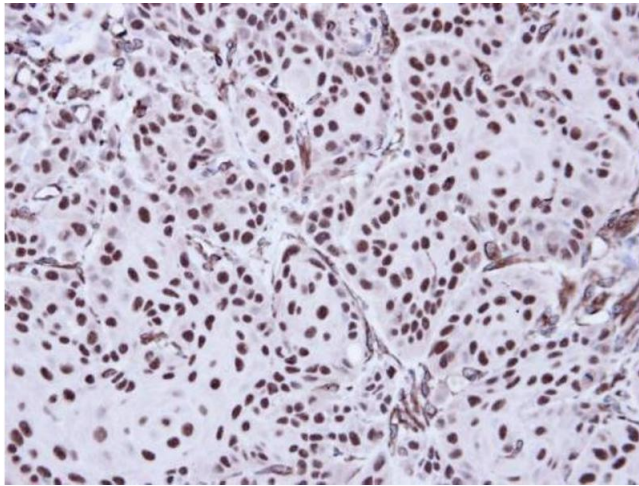
Buffer: 0.1M Tris-Glycine (pH 7), 10 % Glycerol, 0.01 % Thimerosal

Preservative: Thimerosal (Merthiolate)

Precaution of Use: This product contains Thimerosal (Merthiolate): a POISONOUS AND HAZARDOUS SUBSTANCE which should be handled by trained staff only.

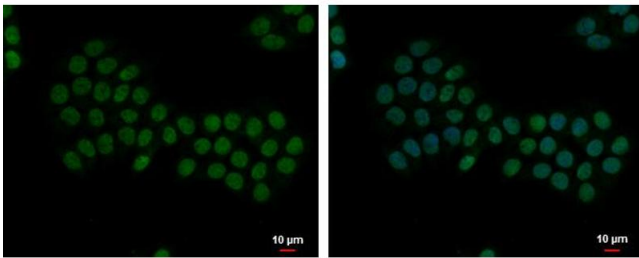
Storage: 4 °C, -20 °C

Storage Comment: Store as concentrated solution. Centrifuge briefly prior to opening vial. For short-term storage (1-2 weeks), store at 4°C. For long-term storage, aliquot and store at -20°C or below. Avoid multiple freeze-thaw cycles.



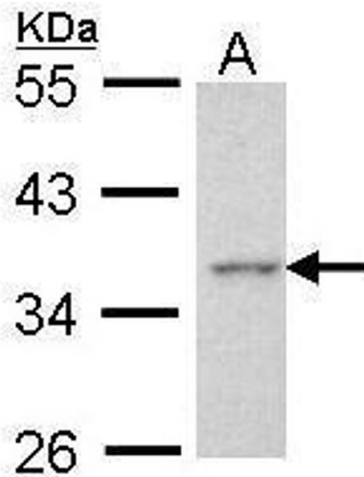
Immunohistochemistry

Image 1. IHC-P Image Immunohistochemical analysis of paraffin-embedded Cal27 Xenograft, using Apoptosis-enhancing nuclease, antibody at 1:100 dilution.



Immunofluorescence

Image 2. ICC/IF Image Apoptosis-enhancing nuclease antibody [C2C3], C-term detects Apoptosis-enhancing nuclease protein at nucleus by immunofluorescent analysis. Sample: HCT 116 cells were fixed in 4% paraformaldehyde at RT for 15 min. Green: Apoptosis-enhancing nuclease protein stained by Apoptosis-enhancing nuclease antibody [C2C3], C-term , diluted at 1:500. Blue: Hoechst 33342 staining.



Western Blotting

Image 3. WB Image Sample (30 ug of whole cell lysate) A: Hela 10% SDS PAGE antibody diluted at 1:1000