

Datasheet for ABIN2856851
anti-CTNNAL1 antibody (Internal Region)[Go to Product page](#)

4 Images

Overview

Quantity:	100 µL
Target:	CTNNAL1
Binding Specificity:	Internal Region
Reactivity:	Human, Mouse
Host:	Rabbit
Clonality:	Polyclonal
Conjugate:	This CTNNAL1 antibody is un-conjugated
Application:	Western Blotting (WB), Immunohistochemistry (Paraffin-embedded Sections) (IHC (p)), Immunocytochemistry (ICC), Immunofluorescence (IF)

Product Details

Immunogen:	Recombinant protein encompassing a sequence within the center region of human Alpha-catulin.
Characteristics:	Rabbit polyclonal antibody to Alpha-catulin (catenin (cadherin-associated protein), alpha-like 1) Alpha-catulin antibody [N3C2], Internal
Purification:	Purified by antigen-affinity chromatography.

Target Details

Target:	CTNNAL1
Alternative Name:	alpha-Catulin (CTNNAL1 Products)
Gene ID:	8727

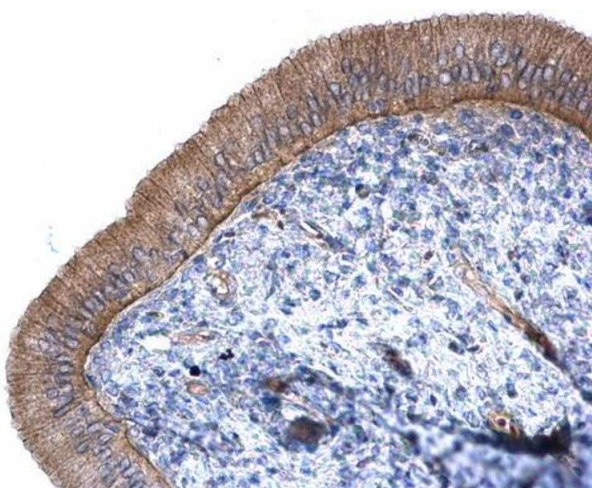
Application Details

Application Notes:	WB: 1:500-1:3000, IHC-P: 1:100-1:1000 [suggested antigen retrieval using heat mediated 10 mM Citrate buffer (pH 6.0) or Tris-EDTA buffer (pH 8.0)], ICC/IF: 1:100-1:1000. Not yet tested in other applications. Optimal working dilutions should be determined experimentally by the end user.
Restrictions:	For Research Use only

Handling

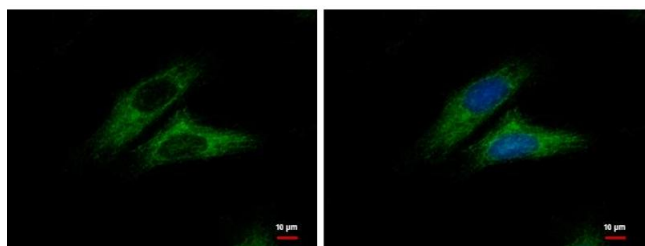
Format:	Liquid
Concentration:	1 mg/mL
Buffer:	0.1M Tris, 0.1M Glycine, 10 % Glycerol (pH 7). 0.01 % Thimerosal was added as a preservative.
Preservative:	Thimerosal (Merthiolate)
Precaution of Use:	This product contains Thimerosal (Merthiolate): a POISONOUS AND HAZARDOUS SUBSTANCE which should be handled by trained staff only.
Storage:	-20 °C
Storage Comment:	Keep as concentrated solution. Aliquot and store at -20°C or below. Avoid multiple freeze-thaw cycles.

Images



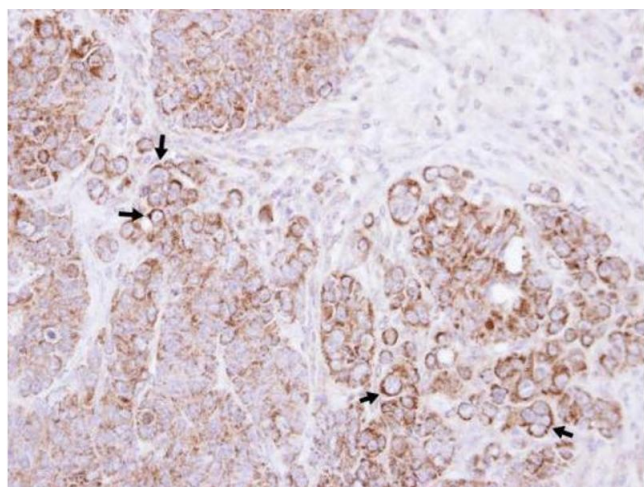
Immunohistochemistry

Image 1. IHC-P Image Alpha-catulin antibody [N3C2], Internal detects Alpha-catulin protein at cytoplasm on mouse cervix by immunohistochemical analysis. Sample: Paraffin-embedded mouse cervix. Alpha-catulin antibody [N3C2], Internal , diluted at 1:500.



Immunofluorescence

Image 2. ICC/IF Image Alpha-catulin antibody [N3C2], Internal detects Alpha-catulin protein at cytoplasm by immunofluorescent analysis. Sample: HeLa cells were fixed in ice-cold MeOH for 5 min. Green: Alpha-catulin protein stained by Alpha-catulin antibody [N3C2], Internal, diluted at 1:500. Blue: Hoechst 33342 staining.



Immunohistochemistry

Image 3. IHC-P Image Immunohistochemical analysis of paraffin-embedded SW480 xenograft, using Alpha-catulin, antibody at 1:100 dilution.

Please check the [product details page](#) for more images. Overall 4 images are available for ABIN2856851.