

Datasheet for ABIN2856852
anti-ZHX2 antibody (C-Term)[Go to Product page](#)

5 Images

Overview

Quantity:	100 µL
Target:	ZHX2
Binding Specificity:	C-Term
Reactivity:	Human
Host:	Rabbit
Clonality:	Polyclonal
Conjugate:	This ZHX2 antibody is un-conjugated
Application:	Western Blotting (WB), Immunoprecipitation (IP), Immunofluorescence (IF), Immunohistochemistry (Paraffin-embedded Sections) (IHC (p)), Immunohistochemistry (Frozen Sections) (IHC (fro)), Immunocytochemistry (ICC), ChIP DNA-Sequencing (ChIP-seq)

Product Details

Immunogen:	Recombinant protein encompassing a sequence within the C-terminus region of human ZHX2. The exact sequence is proprietary.
Isotype:	IgG
Specificity:	Knockdown/Knockout validation was supported by references (PMID:36037364)
Cross-Reactivity:	Human, Mouse
Characteristics:	Rabbit polyclonal antibody to ZHX2 (zinc fingers and homeoboxes 2) ZHX2 antibody [C1C3]
Purification:	Purified by antigen-affinity chromatography.

Product Details

Grade: KO Validated

Target Details

Target: ZHX2

Alternative Name: zinc fingers and homeoboxes 2 ([ZHX2 Products](#))

Molecular Weight: 92 kDa

Gene ID: 22882

UniProt: [Q9Y6X8](#)

Pathways: [Stem Cell Maintenance](#)

Application Details

Application Notes: WB: 1:500-1:3000. ICC/IF: 1:100-1:1000. IHC-P: 1:100-1:1000. IP: 1:100-1:500. Optimal dilutions/concentrations should be determined by the researcher. Not tested in other applications.

Comment: Validation: KO/KD, Orthogonal, Overexpression

Restrictions: For Research Use only

Handling

Format: Liquid

Concentration: 0.7 mg/mL

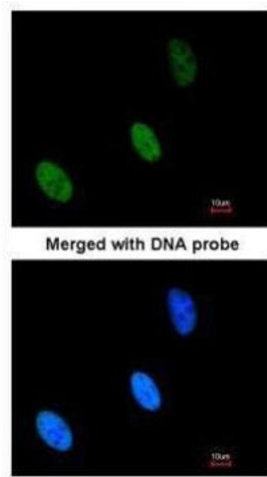
Buffer: 1XPBS (pH 7), 20 % Glycerol, 0.025 % ProClin 300

Preservative: ProClin

Precaution of Use: This product contains ProClin: a POISONOUS AND HAZARDOUS SUBSTANCE which should be handled by trained staff only.

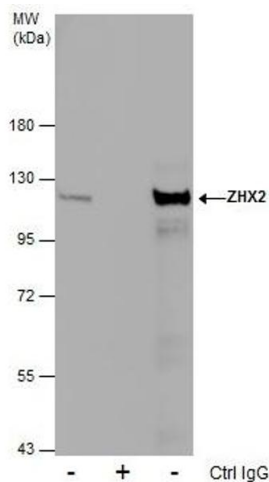
Storage: 4 °C,-20 °C

Storage Comment: Store as concentrated solution. Centrifuge briefly prior to opening vial. For short-term storage (1-2 weeks), store at 4°C. For long-term storage, aliquot and store at -20°C or below. Avoid multiple freeze-thaw cycles.



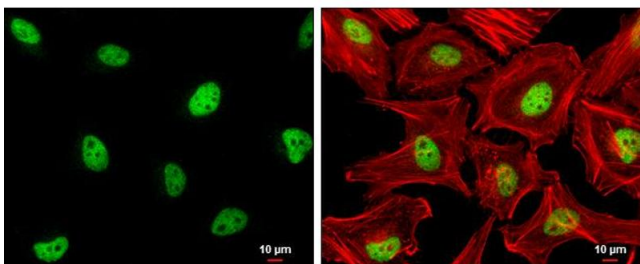
Immunofluorescence

Image 1. ICC/IF Image Immunofluorescence analysis of paraformaldehyde-fixed HeLa, using ZHX2, antibody at 1:200 dilution.



Immunoprecipitation

Image 2. IP Image Immunoprecipitation of ZHX2 protein from MCF-7 whole cell extracts using 5 µg of ZHX2 antibody [C1C3], Western blot analysis was performed using ZHX2 antibody [C1C3], EasyBlot anti-Rabbit IgG was used as a secondary reagent.



Immunofluorescence

Image 3. ICC/IF Image ZHX2 antibody [C1C3] detects ZHX2 protein at nucleus by immunofluorescent analysis. Sample: HeLa cells were fixed in 4% paraformaldehyde at RT for 15 min. Green: ZHX2 protein stained by ZHX2 antibody [C1C3], diluted at 1:500. Red: Phalloidin, a cytoskeleton marker, diluted at 1:200. Scale bar = 10 µm.

Please check the [product details page](#) for more images. Overall 5 images are available for ABIN2856852.