



Datasheet for ABIN2856853
anti-TRPM2 antibody (N-Term)



[Go to Product page](#)

3 Images

Overview

Quantity:	100 µL
Target:	TRPM2
Binding Specificity:	N-Term
Reactivity:	Human
Host:	Rabbit
Clonality:	Polyclonal
Conjugate:	This TRPM2 antibody is un-conjugated
Application:	Western Blotting (WB), Immunohistochemistry (Paraffin-embedded Sections) (IHC (p))

Product Details

Immunogen:	Recombinant protein encompassing a sequence within the N-terminus region of human TRPM2. The exact sequence is proprietary.
Isotype:	IgG
Cross-Reactivity:	Human, Rat
Characteristics:	Rabbit polyclonal antibody to TRPM2 (transient receptor potential cation channel, subfamily M, member 2) TRPM2 antibody [N1N2-2], N-term
Purification:	Purified by antigen-affinity chromatography.

Target Details

Target:	TRPM2
---------	-------

Target Details

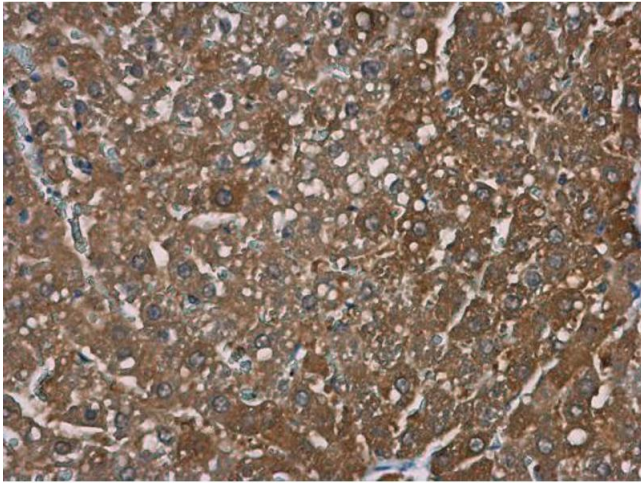
Alternative Name:	transient receptor potential cation channel subfamily M member 2 (TRPM2 Products)
Molecular Weight:	171 kDa
Gene ID:	7226
UniProt:	094759

Application Details

Application Notes:	WB: 1:500-1:3000. IHC-P: 1:100-1:1000. Optimal dilutions/concentrations should be determined by the researcher. Not tested in other applications.
Comment:	Positive Control: HepG2 membrane extract , HepG2 , HepG2 membrane extract Validation: Comparison, Orthogonal
Restrictions:	For Research Use only

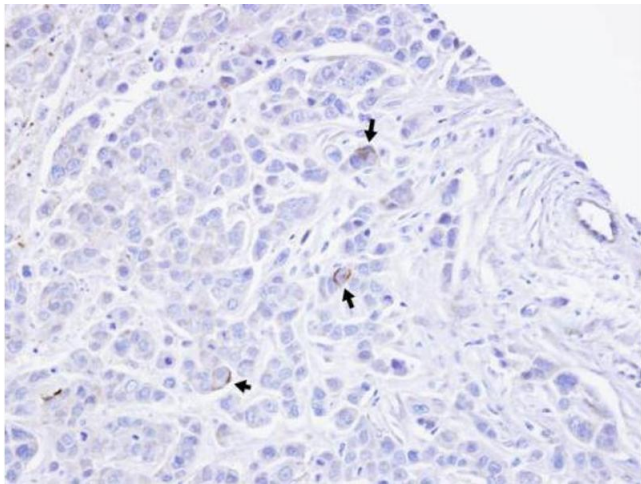
Handling

Format:	Liquid
Concentration:	1.38 mg/mL
Buffer:	1XPBS (pH 7), 20 % Glycerol, 0.025 % ProClin 300
Preservative:	ProClin
Precaution of Use:	This product contains ProClin: a POISONOUS AND HAZARDOUS SUBSTANCE which should be handled by trained staff only.
Storage:	4 °C,-20 °C
Storage Comment:	Store as concentrated solution. Centrifuge briefly prior to opening vial. For short-term storage (1-2 weeks), store at 4°C. For long-term storage, aliquot and store at -20°C or below. Avoid multiple freeze-thaw cycles.



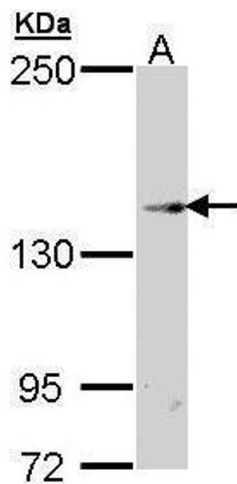
Immunohistochemistry

Image 1. IHC-P Image TRPM2 antibody [N1N2-2], N-term detects TRPM2 protein at cytoplasm in rat liver by immunohistochemical analysis. Sample: Paraffin-embedded rat liver. TRPM2 antibody [N1N2-2], N-term , diluted at 1:500.



Immunohistochemistry

Image 2. IHC-P Image Immunohistochemical analysis of paraffin-embedded MDAMB468 xenograft, using TRPM2, antibody at 1:100 dilution.



Western Blotting

Image 3. WB Image Sample (30 ug of whole cell lysate) A: Hep G2 , 7.5% SDS PAGE antibody diluted at 1:500