



[Go to Product page](#)

Datasheet for ABIN2856857
anti-PPFIBP2 antibody (Center)

3 Images

Overview

Quantity:	100 µL
Target:	PPFIBP2
Binding Specificity:	Center
Reactivity:	Human
Host:	Rabbit
Clonality:	Polyclonal
Conjugate:	This PPFIBP2 antibody is un-conjugated
Application:	Western Blotting (WB), Immunofluorescence (IF), Immunohistochemistry (Paraffin-embedded Sections) (IHC (p)), Immunocytochemistry (ICC)

Product Details

Immunogen:	Recombinant protein encompassing a sequence within the center region of human PPFIBP2.
Characteristics:	Rabbit Polyclonal antibody to PPFIBP2 (PTPRF interacting protein, binding protein 2 (liprin beta 2)) PPFIBP2 antibody
Purification:	Purified by antigen-affinity chromatography.

Target Details

Target:	PPFIBP2
Alternative Name:	PPFIBP2 (PPFIBP2 Products)
Gene ID:	8495

Application Details

Application Notes: WB: 1:500-1:3000, IHC-P: 1:100-1:1000, ICC/IF: 1:100-1:1000.
Not yet tested in other applications.
Optimal working dilutions should be determined experimentally by the end user.

Restrictions: For Research Use only

Handling

Format: Liquid

Concentration: 0.79 mg/mL

Buffer: 0.1M Tris, 0.1M Glycine, 10 % Glycerol (pH 7).
0.01 % Thimerosal was added as a preservative.

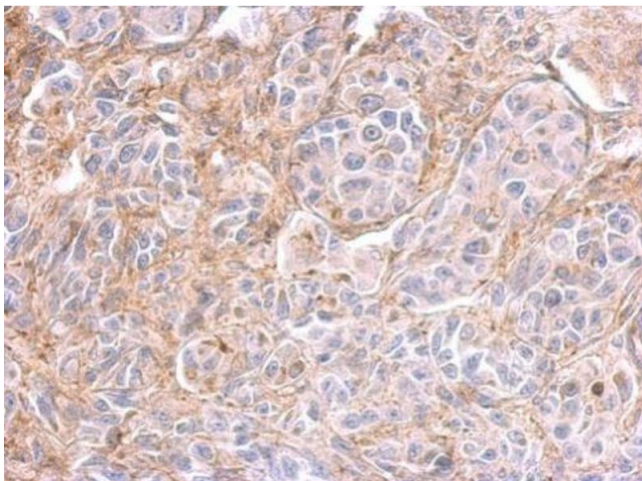
Preservative: Thimerosal (Merthiolate)

Precaution of Use: This product contains Thimerosal (Merthiolate): a POISONOUS AND HAZARDOUS SUBSTANCE which should be handled by trained staff only.

Storage: -20 °C

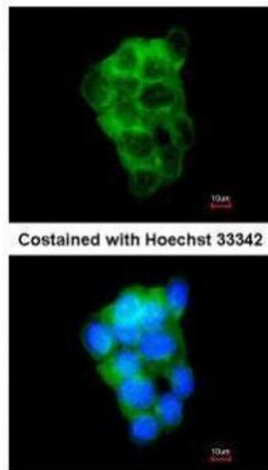
Storage Comment: Keep as concentrated solution. Aliquot and store at -20°C or below.
Avoid multiple freeze-thaw cycles.

Validation report #101746 for Immunofluorescence (IF)



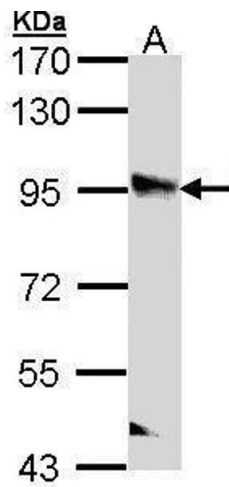
Immunohistochemistry

Image 1. IHC-P Image PPFIBP2 antibody detects PPFIBP2 protein at on SkHep1 xenograft by immunohistochemical analysis. Sample: Paraffin-embedded SkHep1 xenograft. PPFIBP2 antibody , dilution: 1:500.



Immunofluorescence

Image 2. ICC/IF Image Immunofluorescence analysis of methanol-fixed A431, using PPFIB2, antibody at 1:200 dilution.



Western Blotting

Image 3. WB Image Sample (30 ug of whole cell lysate) A: A431, 7.5% SDS PAGE antibody diluted at 1:1000