

Datasheet for ABIN2856864

anti-IFIT3 antibody[Go to Product page](#)**3** Images**2** Publications

Overview

| | |
|--------------|--|
| Quantity: | 100 µL |
| Target: | IFIT3 |
| Reactivity: | Human |
| Host: | Rabbit |
| Clonality: | Polyclonal |
| Conjugate: | This IFIT3 antibody is un-conjugated |
| Application: | Western Blotting (WB), Immunofluorescence (IF), Immunohistochemistry (Paraffin-embedded Sections) (IHC (p)), Immunocytochemistry (ICC) |

Product Details

| | |
|-------------------|---|
| Immunogen: | Recombinant protein encompassing a sequence within the center region of human IFIT3. The exact sequence is proprietary. |
| Isotype: | IgG |
| Cross-Reactivity: | Human |
| Characteristics: | Rabbit Polyclonal antibody to IFIT3 (interferon-induced protein with tetratricopeptide repeats 3) IFIT3 antibody |
| Purification: | Purified by antigen-affinity chromatography. |

Target Details

| | |
|-------------------|--|
| Target: | IFIT3 |
| Alternative Name: | interferon induced protein with tetratricopeptide repeats 3 (IFIT3 Products) |

Target Details

| | |
|-------------------|------------------------|
| Molecular Weight: | 56 kDa |
| Gene ID: | 3437 |
| UniProt: | O14879 |

Application Details

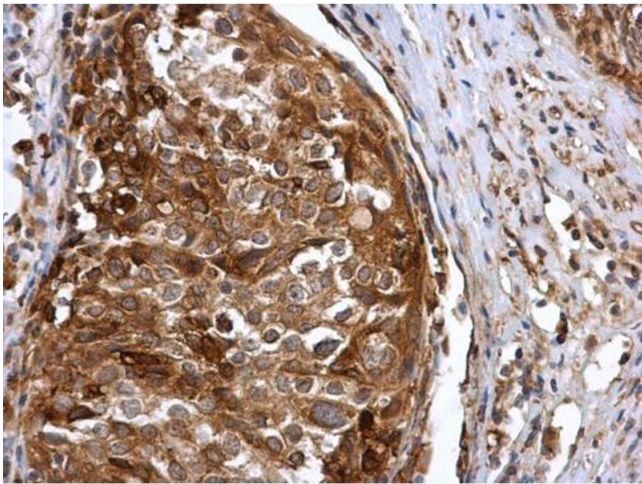
| | |
|--------------------|---|
| Application Notes: | WB: 1:1000-1:10000. ICC/IF: 1:100-1:1000. IHC-P: 1:100-1:1000. Optimal dilutions/concentrations should be determined by the researcher. Not tested in other applications. |
| Comment: | Positive Control: 293T |
| Restrictions: | For Research Use only |

Handling

| | |
|--------------------|--|
| Format: | Liquid |
| Concentration: | 1 mg/mL |
| Buffer: | 0.1M Tris-Glycine (pH 7), 10 % Glycerol, 0.01 % Thimerosal |
| Preservative: | Thimerosal (Merthiolate) |
| Precaution of Use: | This product contains Thimerosal (Merthiolate): a POISONOUS AND HAZARDOUS SUBSTANCE which should be handled by trained staff only. |
| Storage: | 4 °C, -20 °C |
| Storage Comment: | Store as concentrated solution. Centrifuge briefly prior to opening vial. For short-term storage (1-2 weeks), store at 4°C. For long-term storage, aliquot and store at -20°C or below. Avoid multiple freeze-thaw cycles. |

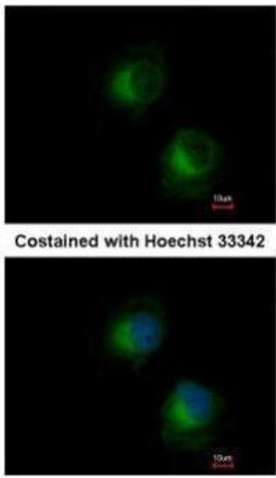
Publications

| | |
|-------------------|---|
| Product cited in: | Whiting, Ogier, Forbush, Bucko, Gopalan, Seternes, Langeberg, Scott: "AKAP220 manages apical actin networks that coordinate aquaporin-2 location and renal water reabsorption." in: Proceedings of the National Academy of Sciences of the United States of America , Vol. 113, Issue 30, pp. E4328-37, (2016) (PubMed). |
|-------------------|---|



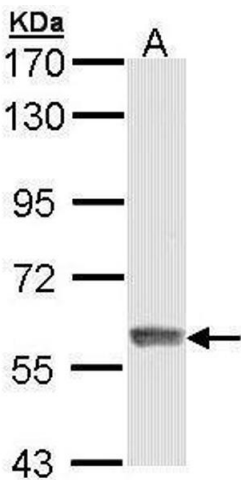
Immunohistochemistry

Image 1. IHC-P Image IFIT3 antibody detects IFIT3 protein at cytoplasm in human cervical carcinoma by immunohistochemical analysis. Sample: Paraffin-embedded human cervical carcinoma. IFIT3 antibody , diluted at 1:500.



Immunofluorescence

Image 2. ICC/IF Image Immunofluorescence analysis of methanol-fixed HeLa, using IFIT3, antibody at 1:500 dilution.



Western Blotting

Image 3. WB Image Sample (30 ug of whole cell lysate) A: 293T 7.5% SDS PAGE antibody diluted at 1:5000