

Datasheet for ABIN2856866

anti-ITIH3 antibody**4** Images[Go to Product page](#)

Overview

Quantity:	100 µL
Target:	ITIH3
Reactivity:	Human
Host:	Rabbit
Clonality:	Polyclonal
Conjugate:	This ITIH3 antibody is un-conjugated
Application:	Western Blotting (WB), Immunohistochemistry (Paraffin-embedded Sections) (IHC (p))

Product Details

Immunogen:	Recombinant protein encompassing a sequence within the center region of human ITIH3. The exact sequence is proprietary.
Isotype:	IgG
Cross-Reactivity:	Human, Mouse
Characteristics:	Rabbit Polyclonal antibody to ITI-H3 (inter-alpha (globulin) inhibitor H3) ITI-H3 antibody [N1N3]
Purification:	Purified by antigen-affinity chromatography.

Target Details

Target:	ITIH3
Alternative Name:	inter-alpha-trypsin inhibitor heavy chain 3 (ITIH3 Products)

Target Details

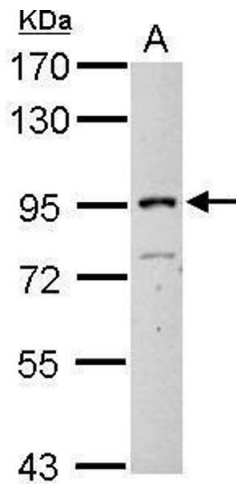
Molecular Weight:	100 kDa
Gene ID:	3699
UniProt:	Q06033
Pathways:	Glycosaminoglycan Metabolic Process

Application Details

Application Notes:	WB: 1:500-1:3000. IHC-P: 1:100-1:1000. Optimal dilutions/concentrations should be determined by the researcher. Not tested in other applications.
Comment:	Positive Control: BCL-1 , A431
Restrictions:	For Research Use only

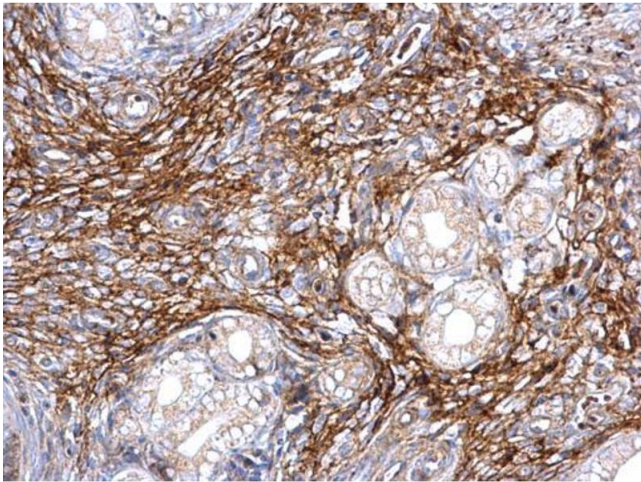
Handling

Format:	Liquid
Concentration:	1 mg/mL
Buffer:	0.1M Tris-Glycine (pH 7), 20 % Glycerol, 0.01 % Thimerosal
Preservative:	Thimerosal (Merthiolate)
Precaution of Use:	This product contains Thimerosal (Merthiolate): a POISONOUS AND HAZARDOUS SUBSTANCE which should be handled by trained staff only.
Storage:	4 °C,-20 °C
Storage Comment:	Store as concentrated solution. Centrifuge briefly prior to opening vial. For short-term storage (1-2 weeks), store at 4°C. For long-term storage, aliquot and store at -20°C or below. Avoid multiple freeze-thaw cycles.



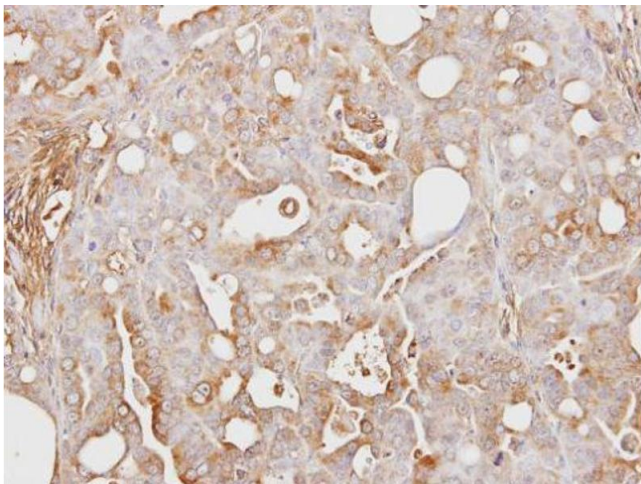
Western Blotting

Image 1. WB Image Sample (30 ug of whole cell lysate) A:
BCL-1 7.5% SDS PAGE antibody diluted at 1:1000



Immunohistochemistry

Image 2. IHC-P Image ITI-H3 antibody [N1N3] detects ITI-H3 protein at secreted on mouse cervix by immunohistochemical analysis. Sample: Paraffin-embedded mouse cervix. ITI-H3 antibody [N1N3], dilution: 1:500.



Immunohistochemistry

Image 3. IHC-P Image Immunohistochemical analysis of paraffin-embedded NCI-N87 xenograft, using ITI-H3, antibody at 1:100 dilution.

Please check the [product details page](#) for more images. Overall 4 images are available for ABIN2856866.