



Datasheet for ABIN2856867  
**anti-LETM1 antibody (C-Term)**



[Go to Product page](#)

6 Images

1 Publication

### Overview

Quantity:	100 µL
Target:	LETM1
Binding Specificity:	C-Term
Reactivity:	Human, Mouse
Host:	Rabbit
Clonality:	Polyclonal
Conjugate:	This LETM1 antibody is un-conjugated
Application:	Western Blotting (WB), Immunofluorescence (IF), Immunohistochemistry (Paraffin-embedded Sections) (IHC (p)), Immunocytochemistry (ICC)

### Product Details

Immunogen:	Recombinant protein encompassing a sequence within the C-terminus region of human LETM1.
Characteristics:	Rabbit Polyclonal antibody to LETM1 (leucine zipper-EF-hand containing transmembrane protein 1) LETM1 antibody
Purification:	Purified by antigen-affinity chromatography.

### Target Details

Target:	LETM1
Alternative Name:	LETM1 ( <a href="#">LETM1 Products</a> )

## Target Details

---

Gene ID: 3954

## Application Details

---

Application Notes: WB: 1:500-1:3000, IHC-P: 1:100-1:1000 [suggested antigen retrieval using heat mediated 10 mM Citrate buffer ( pH 6.0) or Tris-EDTA buffer ( pH 8.0)], ICC/IF: 1:100-1:1000.  
Not yet tested in other applications.  
Optimal working dilutions should be determined experimentally by the end user.

Restrictions: For Research Use only

## Handling

---

Format: Liquid

Concentration: 1 mg/mL

Buffer: 0.1M Tris, 0.1M Glycine, 10 % Glycerol ( pH 7).  
0.01 % Thimerosal was added as a preservative.

Preservative: Thimerosal (Merthiolate)

Precaution of Use: This product contains Thimerosal (Merthiolate): a POISONOUS AND HAZARDOUS SUBSTANCE which should be handled by trained staff only.

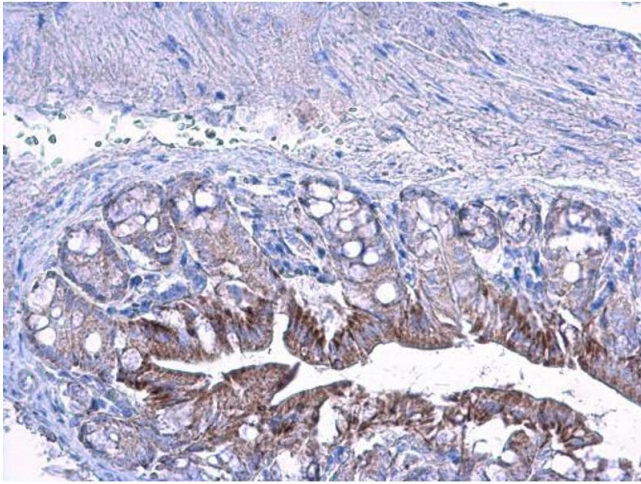
Storage: -20 °C

Storage Comment: Keep as concentrated solution. Aliquot and store at -20°C or below.  
Avoid multiple freeze-thaw cycles.

## Publications

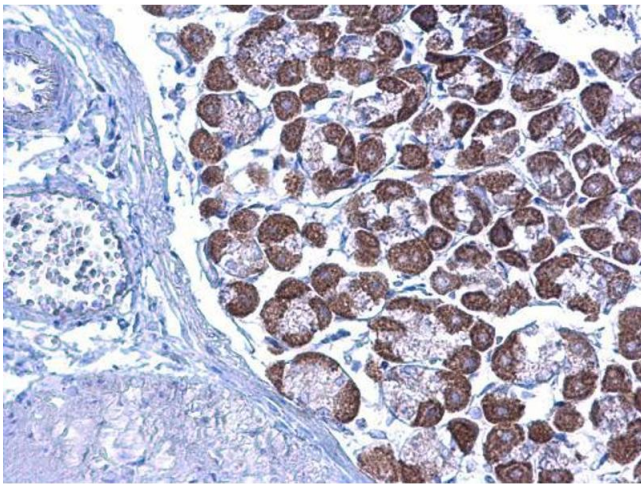
---

Product cited in: Xu, Zhou, Xiong, Zou, Deng, Ganaie, Kleiboeker, Peng, Liu, Wang, Ye, Qiu: "Parvovirus B19 NS1 protein induces cell cycle arrest at G2-phase by activating the ATR-CDC25C-CDK1 pathway." in: **PLoS pathogens**, Vol. 13, Issue 3, pp. e1006266, (2017) ([PubMed](#)).



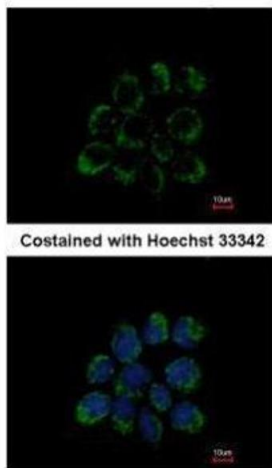
#### Immunohistochemistry

**Image 1.** IHC-P Image LETM1 antibody detects LETM1 protein at cytoplasm on mouse colon by immunohistochemical analysis. Sample: Paraffin-embedded mouse colon. LETM1 antibody , diluted at 1:500.



#### Immunohistochemistry

**Image 2.** IHC-P Image LETM1 antibody detects LETM1 protein at cytoplasm on mouse stomach by immunohistochemical analysis. Sample: Paraffin-embedded mouse stomach. LETM1 antibody , diluted at 1:500.



#### Immunofluorescence

**Image 3.** ICC/IF Image Immunofluorescence analysis of methanol-fixed A431, using LETM1, antibody at 1:200 dilution.

Please check the [product details page](#) for more images. Overall 6 images are available for ABIN2856867.