

Datasheet for ABIN2856868

anti-RCBTB2 antibody[Go to Product page](#)**1** Image

Overview

Quantity:	100 µL
Target:	RCBTB2
Reactivity:	Human
Host:	Rabbit
Clonality:	Polyclonal
Conjugate:	This RCBTB2 antibody is un-conjugated
Application:	Western Blotting (WB)

Product Details

Immunogen:	Recombinant protein encompassing a sequence within the center region of human RCBTB2. The exact sequence is proprietary.
Isotype:	IgG
Cross-Reactivity:	Human
Characteristics:	Rabbit polyclonal antibody to RCBTB2 (regulator of chromosome condensation (RCC1) and BTB (POZ) domain containing protein 2) RCBTB2 antibody [N3C3]
Purification:	Purified by antigen-affinity chromatography.

Target Details

Target:	RCBTB2
Alternative Name:	RCC1 and BTB domain containing protein 2 (RCBTB2 Products)

Target Details

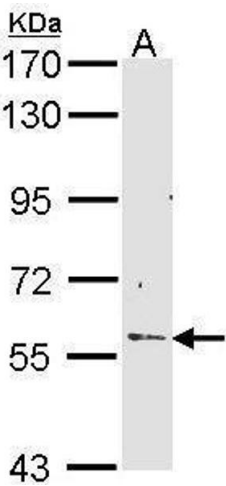
Molecular Weight:	60 kDa
Gene ID:	1102
UniProt:	O95199

Application Details

Application Notes:	WB: 1:500-1:3000. Optimal dilutions/concentrations should be determined by the researcher. Not tested in other applications.
Comment:	Positive Control: HepG2
Restrictions:	For Research Use only

Handling

Format:	Liquid
Concentration:	0.32 mg/mL
Buffer:	0.1M Tris-Glycine (pH 7), 10 % Glycerol, 0.01 % Thimerosal
Preservative:	Thimerosal (Merthiolate)
Precaution of Use:	This product contains Thimerosal (Merthiolate): a POISONOUS AND HAZARDOUS SUBSTANCE which should be handled by trained staff only.
Storage:	4 °C,-20 °C
Storage Comment:	Store as concentrated solution. Centrifuge briefly prior to opening vial. For short-term storage (1-2 weeks), store at 4°C. For long-term storage, aliquot and store at -20°C or below. Avoid multiple freeze-thaw cycles.



Western Blotting

Image 1. WB Image Sample (30 ug of whole cell lysate) A:
Hep G2 , 7.5% SDS PAGE antibody diluted at 1:1000