



[Go to Product page](#)

Datasheet for ABIN2856869  
**anti-CNGA2 antibody (C-Term)**

3 Images

Overview

Quantity:	100 µL
Target:	CNGA2
Binding Specificity:	C-Term
Reactivity:	Human
Host:	Rabbit
Clonality:	Polyclonal
Conjugate:	This CNGA2 antibody is un-conjugated
Application:	Western Blotting (WB), Immunofluorescence (IF), Immunohistochemistry (Paraffin-embedded Sections) (IHC (p)), Immunocytochemistry (ICC)

Product Details

Immunogen:	Recombinant protein encompassing a sequence within the C-terminus region of human CNGA2. The exact sequence is proprietary.
Isotype:	IgG
Cross-Reactivity:	Human, Mouse
Characteristics:	Rabbit Polyclonal antibody to CNGA2 (cyclic nucleotide gated channel alpha 2) CNGA2 antibody [C1C3]
Purification:	Purified by antigen-affinity chromatography.

Target Details

Target:	CNGA2
---------	-------

## Target Details

---

Alternative Name:	cyclic nucleotide gated channel alpha 2 ( <a href="#">CNGA2 Products</a> )
Molecular Weight:	76 kDa
Gene ID:	1260
UniProt:	<a href="#">Q16280</a>

## Application Details

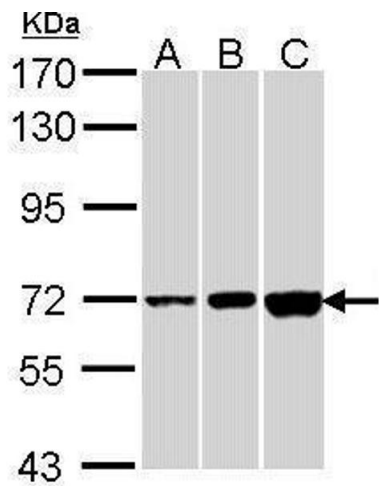
---

Application Notes:	WB: 1:500-1:3000. ICC/IF: 1:100-1:1000. IHC-P: 1:100-1:1000. Optimal dilutions/concentrations should be determined by the researcher. Not tested in other applications.
Comment:	Positive Control: 293T , A431 , HepG2 , mouse brain
Restrictions:	For Research Use only

## Handling

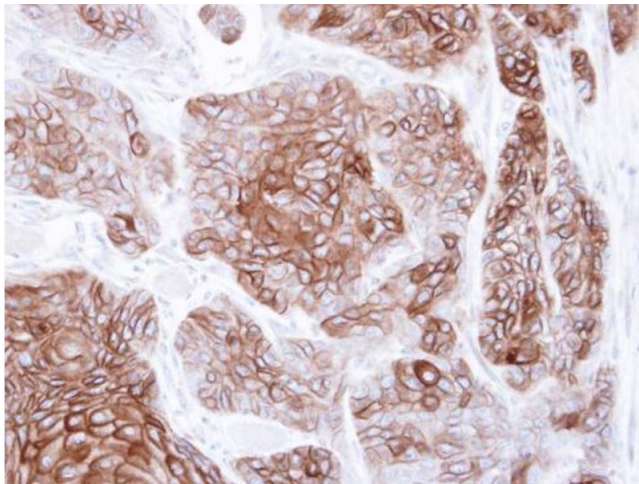
---

Format:	Liquid
Concentration:	1 mg/mL
Buffer:	0.1M Tris-Glycine ( pH 7), 10 % Glycerol, 0.01 % Thimerosal
Preservative:	Thimerosal (Merthiolate)
Precaution of Use:	This product contains Thimerosal (Merthiolate): a POISONOUS AND HAZARDOUS SUBSTANCE which should be handled by trained staff only.
Storage:	4 °C,-20 °C
Storage Comment:	Store as concentrated solution. Centrifuge briefly prior to opening vial. For short-term storage (1-2 weeks), store at 4°C. For long-term storage, aliquot and store at -20°C or below. Avoid multiple freeze-thaw cycles.



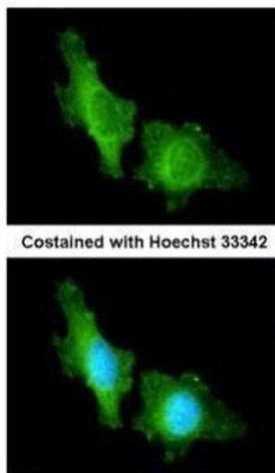
### Western Blotting

**Image 1.** WB Image Sample (30 ug of whole cell lysate) A: 293T B: A431 , C: Hep G2 , 7.5% SDS PAGE antibody diluted at 1:1000



### Immunohistochemistry

**Image 2.** IHC-P Image Immunohistochemical analysis of paraffin-embedded SG xenograft , using CNGA2, antibody at 1:500 dilution.



### Immunofluorescence

**Image 3.** ICC/IF Image Immunofluorescence analysis of methanol-fixed HeLa, using CNGA2, antibody at 1:200 dilution.