

Datasheet for ABIN2856872
anti-CAP1 antibody (Center)[Go to Product page](#)

2 Images

Overview

Quantity:	100 µL
Target:	CAP1
Binding Specificity:	Center
Reactivity:	Human
Host:	Rabbit
Clonality:	Polyclonal
Conjugate:	This CAP1 antibody is un-conjugated
Application:	Western Blotting (WB), Immunohistochemistry (Paraffin-embedded Sections) (IHC (p))

Product Details

Immunogen:	Recombinant protein encompassing a sequence within the center region of human CAP1.
Characteristics:	Rabbit polyclonal antibody to CAP1 (CAP, adenylate cyclase-associated protein 1 (yeast)) CAP1 antibody [C1C3]
Purification:	Purified by antigen-affinity chromatography.

Target Details

Target:	CAP1
Alternative Name:	CAP1 (CAP1 Products)
Gene ID:	10487
Pathways:	cAMP Metabolic Process

Application Details

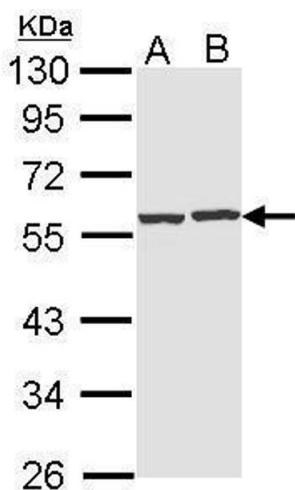
Application Notes:	WB: 1:500-1:3000, IHC-P: 1:100-1:1000 [suggested antigen retrieval using heat mediated 10 mM Citrate buffer (pH 6.0) or Tris-EDTA buffer (pH 8.0)]. Not yet tested in other applications. Optimal working dilutions should be determined experimentally by the end user.
--------------------	--

Restrictions:	For Research Use only
---------------	-----------------------

Handling

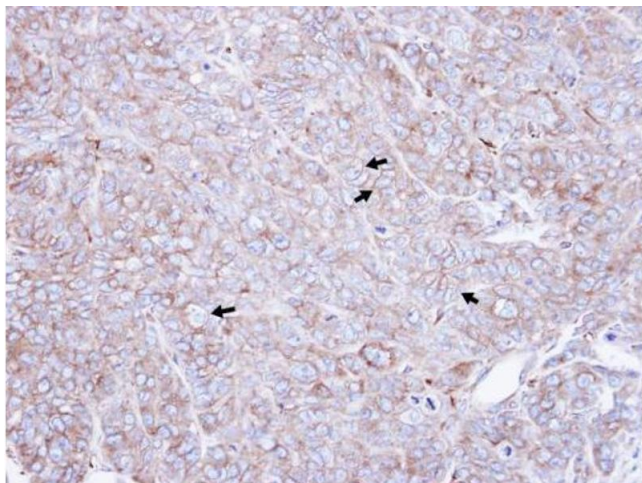
Format:	Liquid
Concentration:	0.92 mg/mL
Buffer:	0.1M Tris, 0.1M Glycine, 10 % Glycerol (pH 7). 0.01 % Thimerosal was added as a preservative.
Preservative:	Thimerosal (Merthiolate)
Precaution of Use:	This product contains Thimerosal (Merthiolate): a POISONOUS AND HAZARDOUS SUBSTANCE which should be handled by trained staff only.
Storage:	-20 °C
Storage Comment:	Keep as concentrated solution. Aliquot and store at -20°C or below. Avoid multiple freeze-thaw cycles.

Images



Western Blotting

Image 1. WB Image Sample (30 ug of whole cell lysate) A: Hep G2 , B: Raji 10% SDS PAGE antibody diluted at 1:1000



Immunohistochemistry

Image 2. IHC-P Image Immunohistochemical analysis of paraffin-embedded DLD1 xenograft , using CAP1, antibody at 1:500 dilution.