

Datasheet for ABIN2856873

**anti-HHIP antibody**

3 Images

[Go to Product page](#)

## Overview

Quantity:	100 µL
Target:	HHIP
Reactivity:	Human
Host:	Rabbit
Clonality:	Polyclonal
Conjugate:	This HHIP antibody is un-conjugated
Application:	Western Blotting (WB), Immunohistochemistry (Paraffin-embedded Sections) (IHC (p)), Immunocytochemistry (ICC), Immunofluorescence (IF)

## Product Details

Immunogen:	Recombinant protein encompassing a sequence within the center region of human HHIP. The exact sequence is proprietary.
Isotype:	IgG
Cross-Reactivity:	Chicken, Human, Mouse
Characteristics:	Rabbit Polyclonal antibody to HHIP (hedgehog interacting protein) HHIP antibody [N3C2], Internal
Purification:	Purified by antigen-affinity chromatography.

## Target Details

Target:	HHIP
Alternative Name:	hedgehog interacting protein ( <a href="#">HHIP Products</a> )

## Target Details

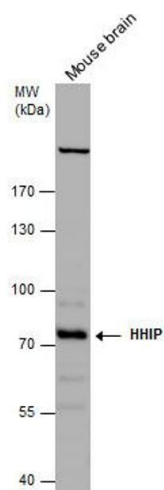
Molecular Weight:	79 kDa
Gene ID:	64399
UniProt:	<a href="#">Q96QV1</a>
Pathways:	<a href="#">Hedgehog Signaling</a>

## Application Details

Application Notes:	WB: 1:500-1:3000. ICC/IF: 1:100-1:1000. IHC-P: 1:100-1:1000. Optimal dilutions/concentrations should be determined by the researcher. Not tested in other applications.
Comment:	Validation: Overexpression
Restrictions:	For Research Use only

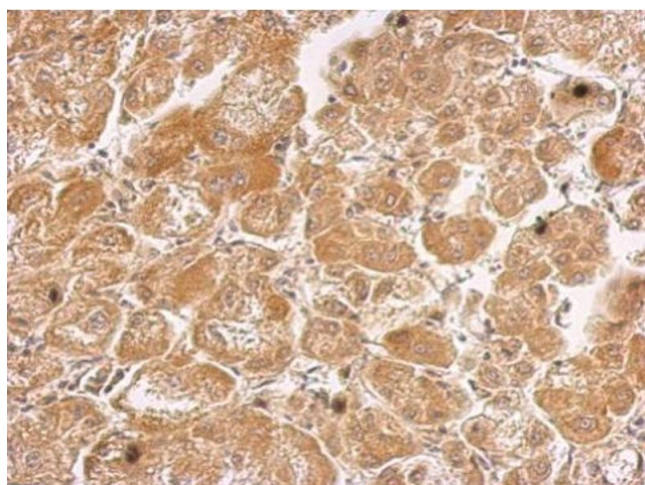
## Handling

Format:	Liquid
Concentration:	1.34 mg/mL
Buffer:	1XPBS ( pH 7), 20 % Glycerol, 0.025 % ProClin 300
Preservative:	ProClin
Precaution of Use:	This product contains ProClin: a POISONOUS AND HAZARDOUS SUBSTANCE which should be handled by trained staff only.
Storage:	4 °C, -20 °C
Storage Comment:	Store as concentrated solution. Centrifuge briefly prior to opening vial. For short-term storage (1-2 weeks), store at 4°C. For long-term storage, aliquot and store at -20°C or below. Avoid multiple freeze-thaw cycles.



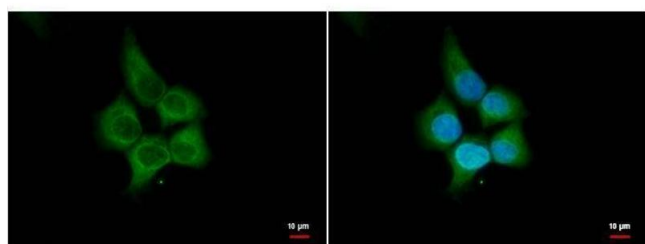
### Western Blotting

**Image 1.** WB Image HHIP antibody [N3C2], Internal detects HHIP protein by western blot analysis. Mouse tissue extracts (50 µg) was separated by 7.5% SDS-PAGE, and the membrane was blotted with HHIP antibody [N3C2], Internal, diluted at 1:1000.



### Immunohistochemistry

**Image 2.** IHC-P Image HHIP antibody [N3C2], Internal detects HHIP protein at cytosol on human hepatoma by immunohistochemical analysis. Sample: Paraffin-embedded hepatoma. HHIP antibody [N3C2], Internal, dilution: 1:500.



### Immunofluorescence

**Image 3.** ICC/IF Image HHIP antibody [N3C2], Internal antibody detects HHIP protein by immunofluorescent analysis. Sample: A431 cells were fixed in 4% paraformaldehyde for 15 min. Green: HHIP protein stained by HHIP antibody [N3C2], Internal antibody, diluted at 1:500. Blue: Hoechst 33342 staining. Scale bar = 10 µm.