

Datasheet for ABIN2856875

anti-AMY2A antibody**2** Images[Go to Product page](#)

Overview

Quantity:	100 µL
Target:	AMY2A
Reactivity:	Human
Host:	Rabbit
Clonality:	Polyclonal
Conjugate:	This AMY2A antibody is un-conjugated
Application:	Western Blotting (WB), Immunohistochemistry (Paraffin-embedded Sections) (IHC (p))

Product Details

Immunogen:	Recombinant protein encompassing a sequence within the center region of human alpha amylase 2A (pancreatic). The exact sequence is proprietary.
Isotype:	IgG
Cross-Reactivity:	Human
Characteristics:	Rabbit Polyclonal antibody to alpha amylase 2A(pancreatic) (amylase, alpha 2A (pancreatic)) alpha amylase 2A (pancreatic) antibody [N2C3]
Purification:	Purified by antigen-affinity chromatography.

Target Details

Target:	AMY2A
Alternative Name:	amylase alpha 2A (pancreatic) (AMY2A Products)

Target Details

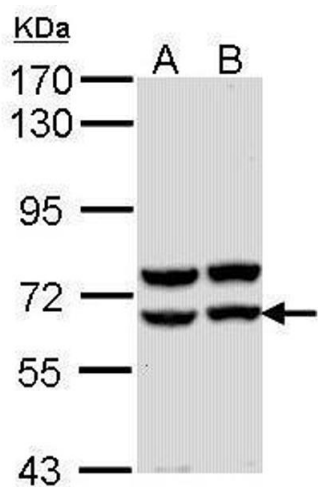
Molecular Weight:	58 kDa
Gene ID:	279
UniProt:	P04746

Application Details

Application Notes:	WB: 1:500-1:3000. IHC-P: 1:100-1:1000. Optimal dilutions/concentrations should be determined by the researcher. Not tested in other applications.
Comment:	Positive Control: Molt-4 , Raji
Restrictions:	For Research Use only

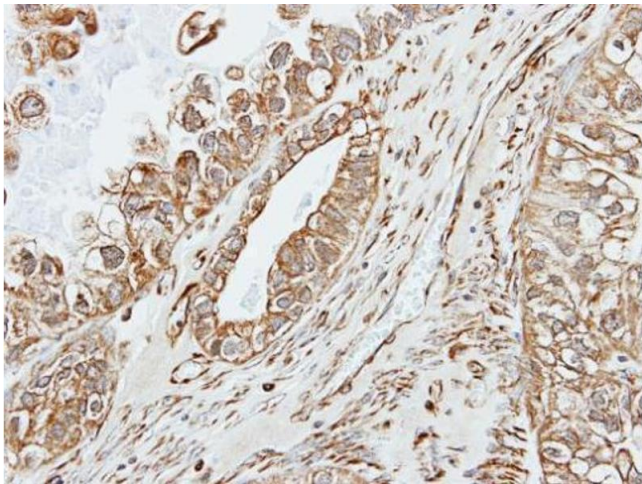
Handling

Format:	Liquid
Concentration:	1 mg/mL
Buffer:	0.1M Tris-Glycine (pH 7), 10 % Glycerol, 0.01 % Thimerosal
Preservative:	Thimerosal (Merthiolate)
Precaution of Use:	This product contains Thimerosal (Merthiolate): a POISONOUS AND HAZARDOUS SUBSTANCE which should be handled by trained staff only.
Storage:	4 °C,-20 °C
Storage Comment:	Store as concentrated solution. Centrifuge briefly prior to opening vial. For short-term storage (1-2 weeks), store at 4°C. For long-term storage, aliquot and store at -20°C or below. Avoid multiple freeze-thaw cycles.



Western Blotting

Image 1. WB Image Sample (30 ug of whole cell lysate) A: Molt-4 , B: Raji 7.5% SDS PAGE antibody diluted at 1:1000



Immunohistochemistry

Image 2. IHC-P Image Immunohistochemical analysis of paraffin-embedded human ovarian cancer, using alpha amylase 2A(pancreatic), antibody at 1:500 dilution.