

Datasheet for ABIN2856888
anti-YWHAB antibody (Center)

5 Images

[Go to Product page](#)

Overview

Quantity:	100 µL
Target:	YWHAB
Binding Specificity:	Center
Reactivity:	Human, Mouse, Rat
Host:	Rabbit
Clonality:	Polyclonal
Application:	Western Blotting (WB), Immunofluorescence (IF), Immunohistochemistry (Paraffin-embedded Sections) (IHC (p)), Immunocytochemistry (ICC)

Product Details

Immunogen:	Recombinant protein encompassing a sequence within the center region of human 14-3-3 beta.
Characteristics:	Rabbit Polyclonal antibody to 14-3-3 beta (tyrosine 3-monooxygenase/tryptophan 5-monooxygenase activation protein, beta polypeptide) 14-3-3 beta antibody [N1C2]
Purification:	Purified by antigen-affinity chromatography.

Target Details

Target:	YWHAB
Alternative Name:	14-3-3 beta (YWHAB Products)
Gene ID:	7529
Pathways:	Fc-epsilon Receptor Signaling Pathway , EGFR Signaling Pathway , Neurotrophin Signaling

Target Details

Pathway, Myometrial Relaxation and Contraction, Maintenance of Protein Location

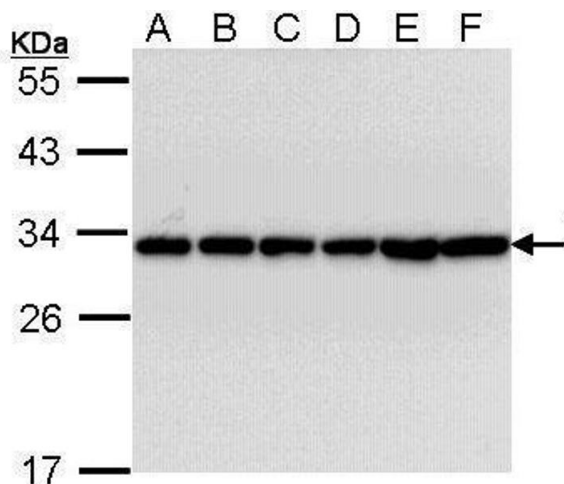
Application Details

Application Notes:	WB: 1:5000-1:20000, IHC-P: 1:100-1:1000 [suggested antigen retrieval using heat mediated 10 mM Citrate buffer (pH 6.0) or Tris-EDTA buffer (pH 8.0)], ICC/IF: 1:100-1:1000. Not yet tested in other applications. Optimal working dilutions should be determined experimentally by the end user.
Restrictions:	For Research Use only

Handling

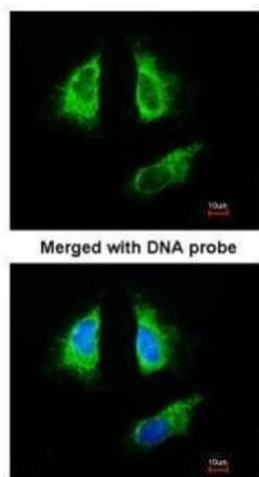
Format:	Liquid
Concentration:	1 mg/mL
Buffer:	0.1M Tris, 0.1M Glycine, 10 % Glycerol (pH 7). 0.01 % Thimerosal was added as a preservative.
Preservative:	Thimerosal (Merthiolate)
Precaution of Use:	This product contains Thimerosal (Merthiolate): a POISONOUS AND HAZARDOUS SUBSTANCE which should be handled by trained staff only.
Storage:	-20 °C
Storage Comment:	Keep as concentrated solution. Aliquot and store at -20°C or below. Avoid multiple freeze-thaw cycles.

Images



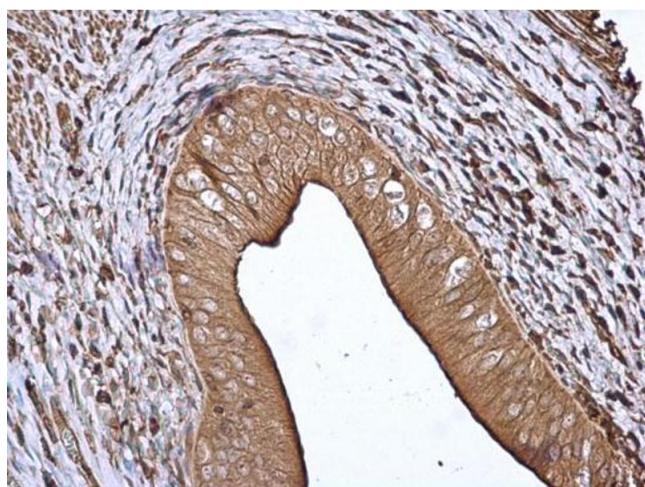
Western Blotting

Image 1. WB Image Sample (30 ug of whole cell lysate) A: A431 , B: H1299 C: Hela D: Hep G2 , E: Molt-4 , F: Raji 12% SDS PAGE antibody diluted at 1:10000



Immunofluorescence

Image 2. ICC/IF Image Immunofluorescence analysis of paraformaldehyde-fixed HeLa, using 14-3-3 beta , antibody at 1:200 dilution.



Immunohistochemistry

Image 3. IHC-P Image 14-3-3 beta antibody [N1C2] detects 14-3-3 beta protein at cytoplasm in rat cervix by immunohistochemical analysis. Sample: Paraffin-embedded rat cervix. 14-3-3 beta antibody [N1C2] , diluted at 1:500.

Please check the [product details page](#) for more images. Overall 5 images are available for ABIN2856888.