

Datasheet for ABIN2856891  
**anti-GP1BB antibody (Internal Region)**[Go to Product page](#)

## 1 Image

## Overview

Quantity:	100 µL
Target:	GP1BB
Binding Specificity:	Internal Region
Reactivity:	Human
Host:	Rabbit
Clonality:	Polyclonal
Conjugate:	This GP1BB antibody is un-conjugated
Application:	Western Blotting (WB)

## Product Details

Immunogen:	Carrier-protein conjugated synthetic peptide encompassing a sequence within the center region of human CD42c.
Characteristics:	Rabbit polyclonal antibody to CD42c (glycoprotein Ib (platelet), beta polypeptide) CD42c antibody [N2C2], Internal
Purification:	Purified by antigen-affinity chromatography.

## Target Details

Target:	GP1BB
Alternative Name:	CD42c ( <a href="#">GP1BB Products</a> )
Gene ID:	2812

Application Details

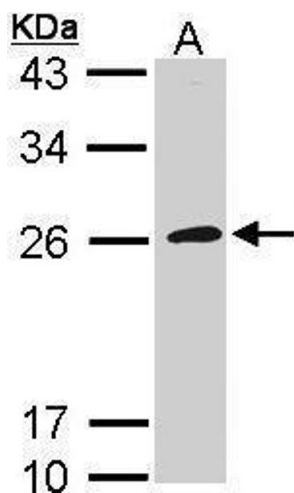
Application Notes:	WB: 1:500-1:3000. Not yet tested in other applications. Optimal working dilutions should be determined experimentally by the end user.
--------------------	--

Restrictions:	For Research Use only
---------------	-----------------------

Handling

Format:	Liquid
Concentration:	0.75 mg/mL
Buffer:	0.1M Tris, 0.1M Glycine, 10 % Glycerol ( pH 7). 0.01 % Thimerosal was added as a preservative.
Preservative:	Thimerosal (Merthiolate)
Precaution of Use:	This product contains Thimerosal (Merthiolate): a POISONOUS AND HAZARDOUS SUBSTANCE which should be handled by trained staff only.
Storage:	-20 °C
Storage Comment:	Keep as concentrated solution. Aliquot and store at -20°C or below. Avoid multiple freeze-thaw cycles.

Validation report #101746 for Immunofluorescence (IF)



**Western Blotting**

**Image 1.** WB Image Sample (30 ug of whole cell lysate) A:  
Raji 12% SDS PAGE antibody diluted at 1:1000