

Datasheet for ABIN2856892  
**anti-BCCIP antibody (C-Term)**[Go to Product page](#)

## 4 Images

## Overview

Quantity:	100 µL
Target:	BCCIP
Binding Specificity:	C-Term
Reactivity:	Human
Host:	Rabbit
Clonality:	Polyclonal
Conjugate:	This BCCIP antibody is un-conjugated
Application:	Western Blotting (WB), Immunofluorescence (IF), Immunohistochemistry (Paraffin-embedded Sections) (IHC (p)), Immunocytochemistry (ICC)

## Product Details

Immunogen:	Carrier-protein conjugated synthetic peptide encompassing a sequence within the C-terminus region of human BCCIP. The exact sequence is proprietary.
Isotype:	IgG
Cross-Reactivity:	Human
Characteristics:	Rabbit Polyclonal antibody to BCCIP (BRCA2 and CDKN1A interacting protein) BCCIP antibody
Purification:	Purified by antigen-affinity chromatography.

## Target Details

Target:	BCCIP
---------	-------

## Target Details

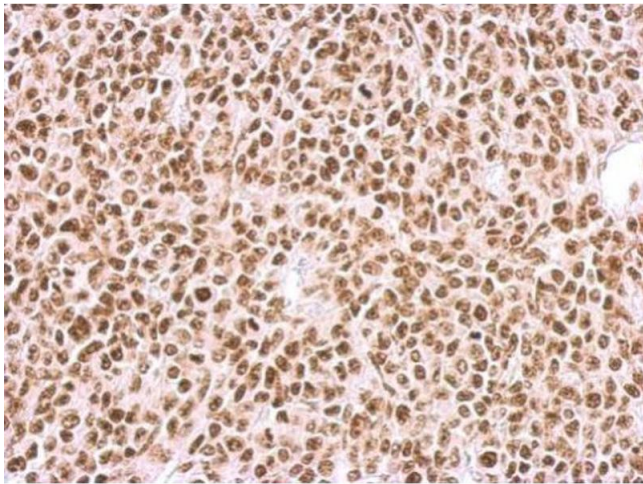
Alternative Name:	BRCA2 and CDKN1A interacting protein ( <a href="#">BCCIP Products</a> )
Molecular Weight:	36 kDa
Gene ID:	56647
UniProt:	<a href="#">Q9P287</a>

## Application Details

Application Notes:	WB: 1:500-1:3000. ICC/IF: 1:100-1:1000. IHC-P: 1:100-1:1000. Optimal dilutions/concentrations should be determined by the researcher. Not tested in other applications.
Comment:	Positive Control: A431 , HeLa
Restrictions:	For Research Use only

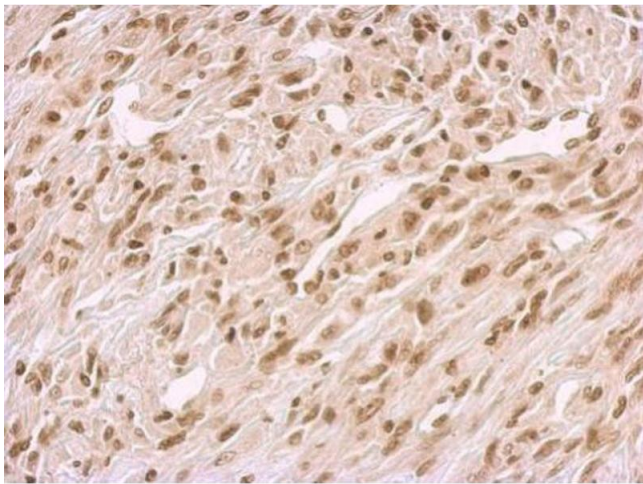
## Handling

Format:	Liquid
Concentration:	1 mg/mL
Buffer:	0.1M Tris-Glycine ( pH 7), 10 % Glycerol, 0.01 % Thimerosal
Preservative:	Thimerosal (Merthiolate)
Precaution of Use:	This product contains Thimerosal (Merthiolate): a POISONOUS AND HAZARDOUS SUBSTANCE which should be handled by trained staff only.
Storage:	4 °C, -20 °C
Storage Comment:	Store as concentrated solution. Centrifuge briefly prior to opening vial. For short-term storage (1-2 weeks), store at 4°C. For long-term storage, aliquot and store at -20°C or below. Avoid multiple freeze-thaw cycles.



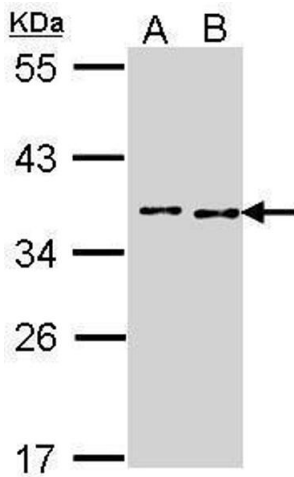
Immunohistochemistry

**Image 1.** IHC-P Image BCCIP antibody detects BCCIP protein at nucleus on BT483 xenograft by immunohistochemical analysis. Sample: Paraffin-embedded BT483 xenograft. BCCIP antibody , dilution: 1:500.



Immunohistochemistry

**Image 2.** IHC-P Image BCCIP antibody detects BCCIP protein at nucleus on U373 xenograft by immunohistochemical analysis. Sample: Paraffin-embedded U373 xenograft. BCCIP antibody , dilution: 1:500.



Western Blotting

**Image 3.** WB Image Sample (30 ug of whole cell lysate) A: A431 , B: HeLa 10% SDS PAGE antibody diluted at 1:1000

Please check the [product details page](#) for more images. Overall 4 images are available for ABIN2856892.