

Datasheet for ABIN2856893
anti-KIR3DL2 antibody (C-Term)[Go to Product page](#)

2 Images

Overview

Quantity:	100 µL
Target:	KIR3DL2
Binding Specificity:	C-Term
Reactivity:	Human
Host:	Rabbit
Clonality:	Polyclonal
Conjugate:	This KIR3DL2 antibody is un-conjugated
Application:	Western Blotting (WB), Immunofluorescence (IF), Immunocytochemistry (ICC)

Product Details

Immunogen:	Carrier-protein conjugated synthetic peptide encompassing a sequence within the C-terminus region of human LOC727787.
Characteristics:	Rabbit polyclonal antibody to LOC727787 LOC727787 antibody
Purification:	Purified by antigen-affinity chromatography.

Target Details

Target:	KIR3DL2
Alternative Name:	LOC727787 (KIR3DL2 Products)
Gene ID:	727787

Application Details

Application Notes: WB: 1:500-1:3000, ICC/IF: 1:100-1:1000.
Not yet tested in other applications.
Optimal working dilutions should be determined experimentally by the end user.

Restrictions: For Research Use only

Handling

Format: Liquid

Concentration: 0.61 mg/mL

Buffer: 0.1M Tris, 0.1M Glycine, 10 % Glycerol (pH 7).
0.01 % Thimerosal was added as a preservative.

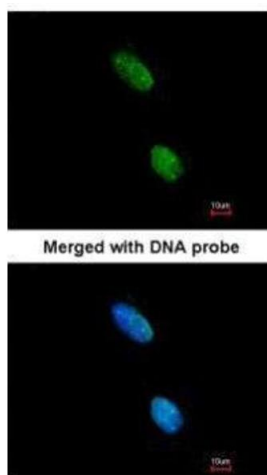
Preservative: Thimerosal (Merthiolate)

Precaution of Use: This product contains Thimerosal (Merthiolate): a POISONOUS AND HAZARDOUS SUBSTANCE which should be handled by trained staff only.

Storage: -20 °C

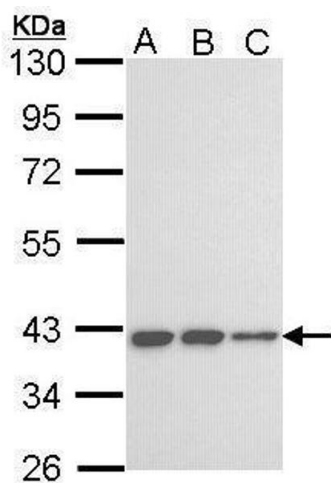
Storage Comment: Keep as concentrated solution. Aliquot and store at -20°C or below.
Avoid multiple freeze-thaw cycles.

Images



Immunofluorescence

Image 1. ICC/IF Image Immunofluorescence analysis of paraformaldehyde-fixed HeLa, using LOC727787, antibody at 1:200 dilution.



Western Blotting

Image 2. WB Image Sample (30 ug of whole cell lysate) A: A431 , B: H1299 C: Hela 10% SDS PAGE antibody diluted at 1:1000