

Datasheet for ABIN2856894

anti-STK24 antibody

4 Images

[Go to Product page](#)

Overview

Quantity:	100 µL
Target:	STK24
Reactivity:	Human
Host:	Rabbit
Clonality:	Polyclonal
Conjugate:	This STK24 antibody is un-conjugated
Application:	Western Blotting (WB), Immunohistochemistry (Paraffin-embedded Sections) (IHC (p)), Immunofluorescence (IF), Immunocytochemistry (ICC)

Product Details

Immunogen:	Carrier-protein conjugated synthetic peptide encompassing a sequence within the center region of human MST3. The exact sequence is proprietary.
Isotype:	IgG
Cross-Reactivity:	Human, Rat
Characteristics:	Rabbit polyclonal antibody to STK24 (serine/threonine kinase 24 (STE20 homolog, yeast)) STK24 (non-phospho Thr178) antibody [N2C1], Internal
Purification:	Purified by antigen-affinity chromatography.

Target Details

Target:	STK24
Alternative Name:	serine/threonine kinase 24 (STK24 Products)

Target Details

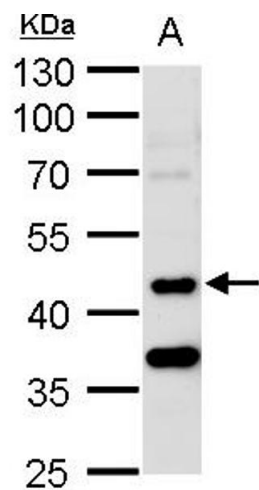
Molecular Weight:	49 kDa
Gene ID:	8428
UniProt:	Q9Y6E0

Application Details

Application Notes:	WB: 1:500-1:3000. ICC/IF: 1:100-1:1000. IHC-P: 1:100-1:1000. Optimal dilutions/concentrations should be determined by the researcher. Not tested in other applications.
Comment:	Positive Control: Raji , rat brain
Restrictions:	For Research Use only

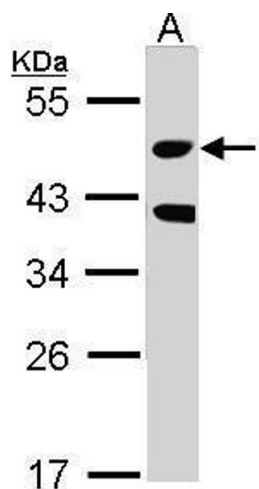
Handling

Format:	Liquid
Concentration:	0.94 mg/mL
Buffer:	0.1M Tris-Glycine (pH 7), 10 % Glycerol, 0.01 % Thimerosal
Preservative:	Thimerosal (Merthiolate)
Precaution of Use:	This product contains Thimerosal (Merthiolate): a POISONOUS AND HAZARDOUS SUBSTANCE which should be handled by trained staff only.
Storage:	4 °C,-20 °C
Storage Comment:	Store as concentrated solution. Centrifuge briefly prior to opening vial. For short-term storage (1-2 weeks), store at 4°C. For long-term storage, aliquot and store at -20°C or below. Avoid multiple freeze-thaw cycles.



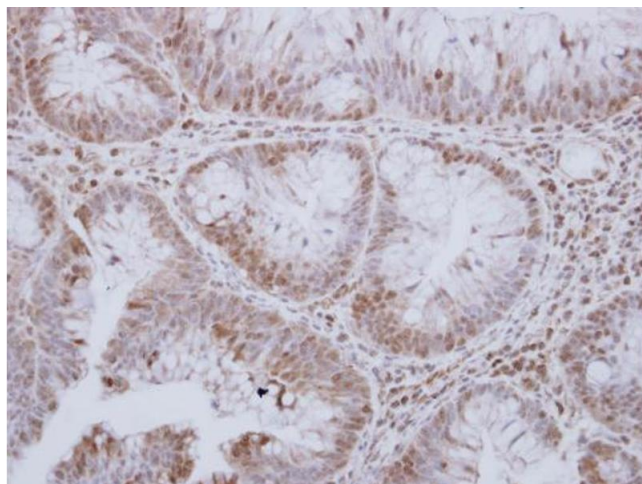
Western Blotting

Image 1. WB Image STK24 antibody [N2C1], Internal detects STK24 protein by western blot analysis. A. 50 µg rat brain lysate/extract 10 % SDS-PAGE STK24 antibody [N2C1], Internal , dilution: 1:1000



Western Blotting

Image 2. WB Image Sample (30 ug of whole cell lysate) A: Raji 10% SDS PAGE antibody diluted at 1:1000



Immunohistochemistry

Image 3. IHC-P Image STK24 antibody [N2C1], Internal detects STK24 protein at cytosol and nucleus on human breast carcinoma by immunohistochemical analysis. Sample: Paraffin-embedded human breast carcinoma. STK24 antibody [N2C1], Internal , dilution: 1:250.

Please check the [product details page](#) for more images. Overall 4 images are available for ABIN2856894.