

Datasheet for ABIN2856897

anti-ASPA antibody

4 Images

1 Publication

[Go to Product page](#)

Overview

Quantity:	100 µL
Target:	ASPA
Reactivity:	Human
Host:	Rabbit
Clonality:	Polyclonal
Conjugate:	This ASPA antibody is un-conjugated
Application:	Western Blotting (WB), Immunofluorescence (IF), Immunohistochemistry (Paraffin-embedded Sections) (IHC (p)), Immunocytochemistry (ICC), Immunohistochemistry (Frozen Sections) (IHC (fro))

Product Details

Immunogen:	Recombinant protein encompassing a sequence within the center region of human Aspartoacylase. The exact sequence is proprietary.
Isotype:	IgG
Cross-Reactivity:	Human, Monkey, Mouse
Characteristics:	Rabbit Polyclonal antibody to Aspartoacylase (aspartoacylase (Canavan disease)) Aspartoacylase antibody [N1C3-2]
Purification:	Purified by antigen-affinity chromatography.

Target Details

Target:	ASPA
---------	------

Target Details

Alternative Name:	aspartoacylase (ASPA Products)
Molecular Weight:	36 kDa
Gene ID:	443
UniProt:	P45381

Application Details

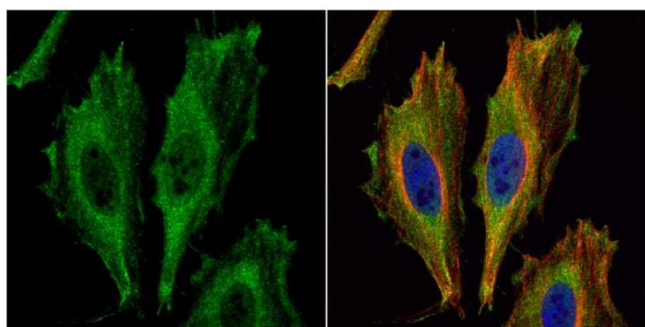
Application Notes:	WB: 1:5000-1:20000. ICC/IF: 1:100-1:1000. IHC-P: 1:100-1:1000. Optimal dilutions/concentrations should be determined by the researcher. Not tested in other applications.
Comment:	Positive Control: ASPA-transfected 293T Validation: Overexpression
Restrictions:	For Research Use only

Handling

Format:	Liquid
Concentration:	1.33 mg/mL
Buffer:	1XPBS (pH 7), 20 % Glycerol, 0.025 % ProClin 300
Preservative:	ProClin
Precaution of Use:	This product contains ProClin: a POISONOUS AND HAZARDOUS SUBSTANCE which should be handled by trained staff only.
Storage:	4 °C,-20 °C
Storage Comment:	Store as concentrated solution. Centrifuge briefly prior to opening vial. For short-term storage (1-2 weeks), store at 4°C. For long-term storage, aliquot and store at -20°C or below. Avoid multiple freeze-thaw cycles.

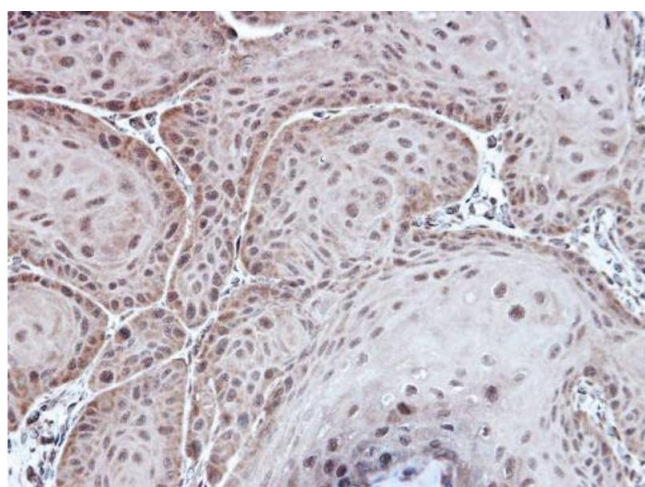
Publications

Product cited in:	Salzman, Nakamura, Nallur, Dookwah, Metheetrairut, Slack, Weidhaas: "miR-34 activity is modulated through 5'-end phosphorylation in response to DNA damage." in: Nature communications , Vol. 7, pp. 10954, (2016) (PubMed).
-------------------	---



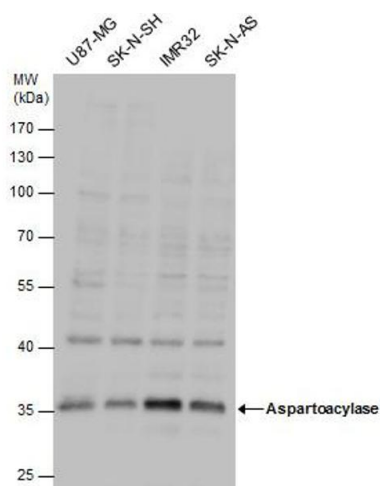
Immunofluorescence

Image 1. ICC/IF Image Aspartoacylase antibody [N1C3-2] detects Aspartoacylase protein at cytoplasm by immunofluorescent analysis. Sample: HeLa cells were fixed in 4% paraformaldehyde at RT for 15 min. Green: Aspartoacylase protein stained by Aspartoacylase antibody [N1C3-2], diluted at 1:500. Red: alpha Tubulin, a cytoskeleton marker, stained by alpha Tubulin antibody [GT114], diluted at 1:1000. Blue: Hoechst 33342 staining.



Immunohistochemistry

Image 2. IHC-P Image Immunohistochemical analysis of paraffin-embedded Cal27 xenograft, using Aspartoacylase, antibody at 1:100 dilution.



Western Blotting

Image 3. WB Image Aspartoacylase antibody detects Aspartoacylase protein by western blot analysis. Various whole cell extracts (30 µg) were separated by 10% SDS-PAGE, and the membrane was blotted with Aspartoacylase antibody, diluted by 1:1000.

Please check the [product details page](#) for more images. Overall 4 images are available for ABIN2856897.