



[Go to Product page](#)

Datasheet for ABIN2856900

anti-ENO3 antibody

4 Images

1 Publication

Overview

Quantity:	100 µL
Target:	ENO3
Reactivity:	Human
Host:	Rabbit
Clonality:	Polyclonal
Conjugate:	This ENO3 antibody is un-conjugated
Application:	Western Blotting (WB), Immunohistochemistry (Paraffin-embedded Sections) (IHC (p)), Immunohistochemistry (Whole Mount) (IHC (wm))

Product Details

Immunogen:	Recombinant protein encompassing a sequence within the center region of human ENO3. The exact sequence is proprietary.
Isotype:	IgG
Cross-Reactivity:	Human, Mouse, Rat, Zebrafish (Danio rerio)
Characteristics:	Rabbit Polyclonal antibody to ENO3 (enolase 3 (beta, muscle)) ENO3 antibody
Purification:	Purified by antigen-affinity chromatography.

Target Details

Target:	ENO3
Alternative Name:	enolase 3 (ENO3 Products)

Target Details

Molecular Weight: 47 kDa

Gene ID: 2027

UniProt: [P13929](#)

Application Details

Application Notes: WB: 1:1000-1:10000. IHC-P: 1:100-1:1000. Optimal dilutions/concentrations should be determined by the researcher. Not tested in other applications.

Comment: Positive Control: HepG2 , Molt-4 , Raji , Mouse brain , Rat2

Restrictions: For Research Use only

Handling

Format: Liquid

Concentration: 0.46 mg/mL

Buffer: 0.1M Tris-Glycine (pH 7), 10 % Glycerol, 0.01 % Thimerosal

Preservative: Thimerosal (Merthiolate)

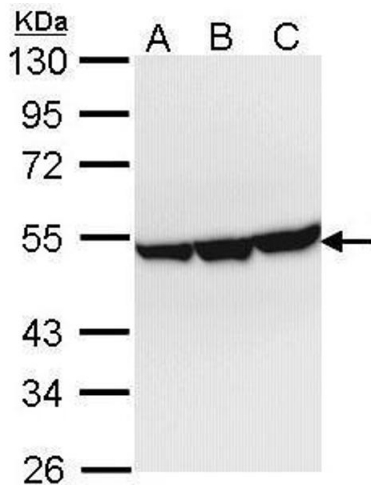
Precaution of Use: This product contains Thimerosal (Merthiolate): a POISONOUS AND HAZARDOUS SUBSTANCE which should be handled by trained staff only.

Storage: 4 °C,-20 °C

Storage Comment: Store as concentrated solution. Centrifuge briefly prior to opening vial. For short-term storage (1-2 weeks), store at 4°C. For long-term storage, aliquot and store at -20°C or below. Avoid multiple freeze-thaw cycles.

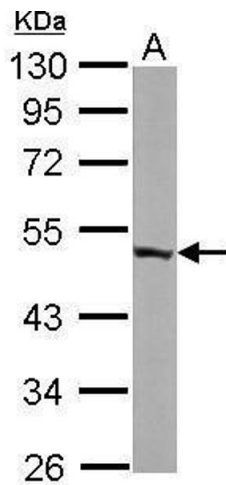
Publications

Product cited in: Xu, Zhou, Xiong, Zou, Deng, Ganaie, Kleiboeker, Peng, Liu, Wang, Ye, Qiu: "Parvovirus B19 NS1 protein induces cell cycle arrest at G2-phase by activating the ATR-CDC25C-CDK1 pathway." in: **PLoS pathogens**, Vol. 13, Issue 3, pp. e1006266, (2017) ([PubMed](#)).



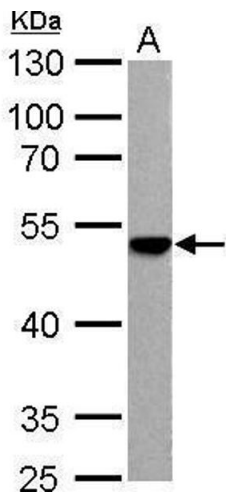
Western Blotting

Image 1. WB Image Sample (30 ug of whole cell lysate) A: Hep G2 , B: Molt-4 , C: Raji 10% SDS PAGE antibody diluted at 1:1000



Western Blotting

Image 2. WB Image Sample (50 ug of whole cell lysate) A: mouse brain 10% SDS PAGE antibody diluted at 1:10000



Western Blotting

Image 3. WB Image ENO3 antibody detects ENO3 protein by Western blot analysis. A. 30 μ g Rat2 whole cell lysate/extract 10 % SDS-PAGE ENO3 antibody , dilution: 1:1000

Please check the [product details page](#) for more images. Overall 4 images are available for ABIN2856900.