

Datasheet for ABIN2856912
anti-PSMA3 antibody (Center)[Go to Product page](#)

3 Images

Overview

Quantity:	100 µL
Target:	PSMA3
Binding Specificity:	Center
Reactivity:	Human, Mouse
Host:	Rabbit
Clonality:	Polyclonal
Conjugate:	This PSMA3 antibody is un-conjugated
Application:	Western Blotting (WB), Immunohistochemistry (Paraffin-embedded Sections) (IHC (p))

Product Details

Immunogen:	Recombinant protein encompassing a sequence within the center region of human Proteasome 20S alpha 3.
Characteristics:	Rabbit Polyclonal antibody to Proteasome 20S alpha 3 (proteasome (prosome, macropain) subunit, alpha type, 3) Proteasome 20S alpha 3 antibody
Purification:	Purified by antigen-affinity chromatography.

Target Details

Target:	PSMA3
Alternative Name:	Proteasome 20S alpha 3 (PSMA3 Products)
Gene ID:	5684

Target Details

Pathways: [Mitotic G1-G1/S Phases](#), [DNA Replication](#), [Synthesis of DNA](#)

Application Details

Application Notes: WB: 1:500-1:3000, IHC-P: 1:100-1:1000 [suggested antigen retrieval using heat mediated 10 mM Citrate buffer (pH 6.0) or Tris-EDTA buffer (pH 8.0)].
Not yet tested in other applications.
Optimal working dilutions should be determined experimentally by the end user.

Restrictions: For Research Use only

Handling

Format: Liquid

Concentration: 0.36 mg/mL

Buffer: 0.1M Tris, 0.1M Glycine, 20 % Glycerol (pH 7).
0.01 % Thimerosal was added as a preservative.

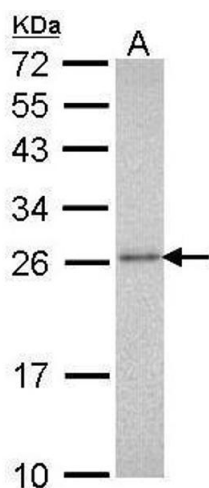
Preservative: Thimerosal (Merthiolate)

Precaution of Use: This product contains Thimerosal (Merthiolate): a POISONOUS AND HAZARDOUS SUBSTANCE which should be handled by trained staff only.

Storage: -20 °C

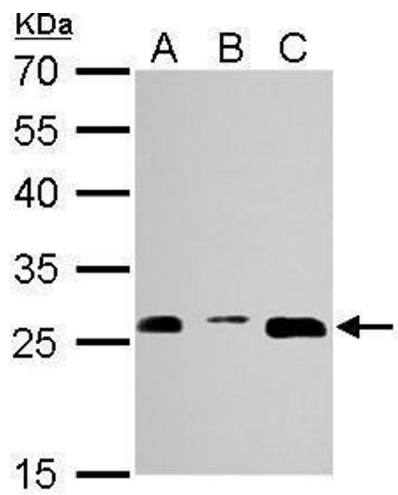
Storage Comment: Keep as concentrated solution. Aliquot and store at -20°C or below.
Avoid multiple freeze-thaw cycles.

Validation report #101404 for ELISA (ELISA)



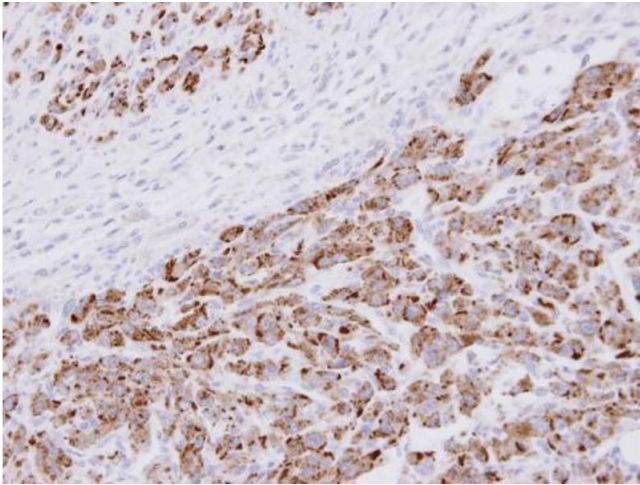
Western Blotting

Image 1. WB Image Sample (30 ug of whole cell lysate) A:
Molt-4 , 12% SDS PAGE antibody diluted at 1:1000



Western Blotting

Image 2. WB Image Proteasome 20S alpha 3 antibody detects PSMA3 protein by Western blot analysis. A. 30 µg NIH-3T3 whole cell lysate/extract B. 30 µg JC whole cell lysate/extract C. 30 µg BCL-1 whole cell lysate/extract 12 % SDS-PAGE Proteasome 20S alpha 3 antibody , dilution: 1:1000



Immunohistochemistry

Image 3. IHC-P Image Immunohistochemical analysis of paraffin-embedded U87 xenograft , using 20S Proteasome alpha3 , antibody at 1:100 dilution.