

Datasheet for ABIN2856913
anti-PSMA6 antibody (Center)

8 Images

[Go to Product page](#)

Overview

Quantity:	100 µL
Target:	PSMA6
Binding Specificity:	Center
Reactivity:	Human, Mouse, Rat
Host:	Rabbit
Clonality:	Polyclonal
Conjugate:	This PSMA6 antibody is un-conjugated
Application:	Western Blotting (WB), Immunofluorescence (IF), Immunohistochemistry (Paraffin-embedded Sections) (IHC (p)), Immunocytochemistry (ICC)

Product Details

Immunogen:	Recombinant protein encompassing a sequence within the center region of human Proteasome 20S alpha 6.
Characteristics:	Rabbit Polyclonal antibody to Proteasome 20S alpha 6 (proteasome (prosome, macropain) subunit, alpha type, 6) Proteasome 20S alpha 6 antibody
Purification:	Purified by antigen-affinity chromatography.

Target Details

Target:	PSMA6
Alternative Name:	Proteasome 20S alpha 6 (PSMA6 Products)

Target Details

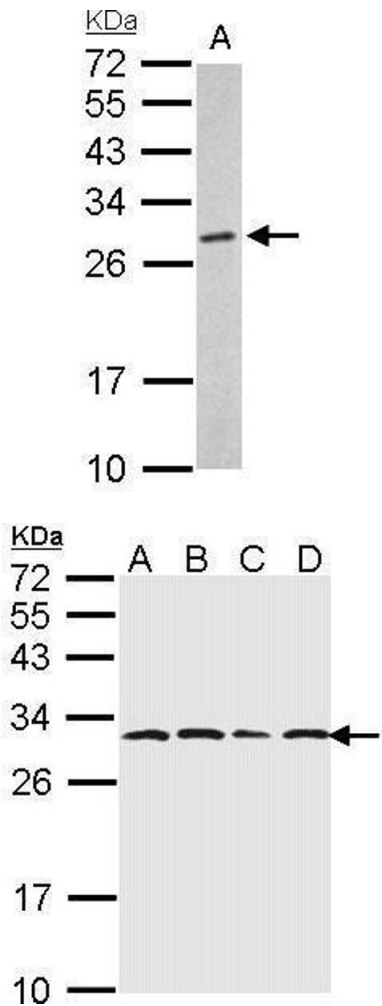
Gene ID:	5687
Pathways:	Mitotic G1-G1/S Phases , DNA Replication , Synthesis of DNA

Application Details

Application Notes:	WB: 1:500-1:3000, IHC-P: 1:100-1:1000 [suggested antigen retrieval using heat mediated 10 mM Citrate buffer (pH 6.0) or Tris-EDTA buffer (pH 8.0)], ICC/IF: 1:100-1:1000. Not yet tested in other applications. Optimal working dilutions should be determined experimentally by the end user.
Restrictions:	For Research Use only

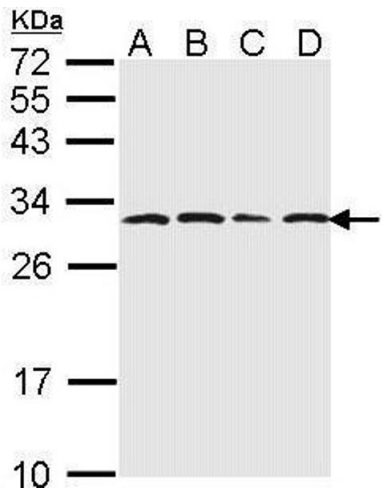
Handling

Format:	Liquid
Concentration:	1 mg/mL
Buffer:	0.1M Tris, 0.1M Glycine, 20 % Glycerol (pH 7). 0.01 % Thimerosal was added as a preservative.
Preservative:	Thimerosal (Merthiolate)
Precaution of Use:	This product contains Thimerosal (Merthiolate): a POISONOUS AND HAZARDOUS SUBSTANCE which should be handled by trained staff only.
Storage:	-20 °C
Storage Comment:	Keep as concentrated solution. Aliquot and store at -20°C or below. Avoid multiple freeze-thaw cycles.



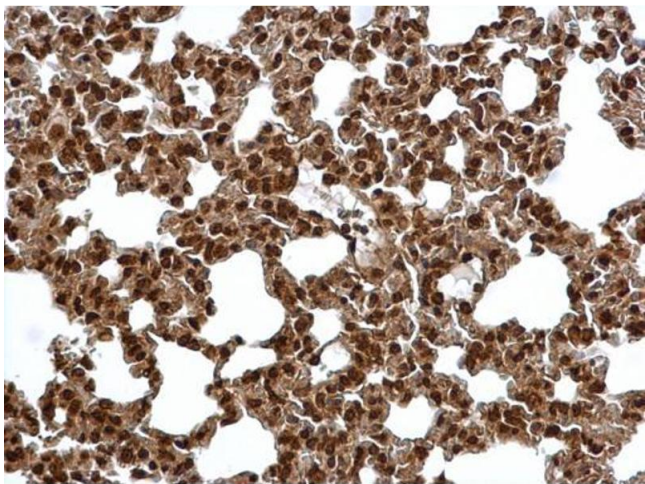
Western Blotting

Image 1. WB Image Proteasome 20S alpha 6 antibody detects PSMA6 protein by Western blot analysis. A. 50 µg mouse liver lysate/extract 12 % SDS-PAGE Proteasome 20S alpha 6 antibody , dilution: 1:1000



Western Blotting

Image 2. WB Image Sample (30 ug of whole cell lysate) A: 293T B: A431 , C: H1299 D: Hela 12% SDS PAGE antibody diluted at 1:1000



Immunohistochemistry

Image 3. IHC-P Image Proteasome 20S alpha 6 antibody detects Proteasome 20S alpha 6 protein at cytosol and nucleus on mouse lung by immunohistochemical analysis. Sample: Paraffin-embedded mouse lung. Proteasome 20S alpha 6 antibody , dilution: 1:500.

Please check the [product details page](#) for more images. Overall 8 images are available for ABIN2856913.