

Datasheet for ABIN2856915
anti-PSMB8 antibody (Center)[Go to Product page](#)

4 Images

Overview

Quantity:	100 µL
Target:	PSMB8
Binding Specificity:	Center
Reactivity:	Human, Mouse
Host:	Rabbit
Clonality:	Polyclonal
Conjugate:	This PSMB8 antibody is un-conjugated
Application:	Western Blotting (WB), Immunofluorescence (IF), Immunocytochemistry (ICC), Immunohistochemistry (Paraffin-embedded Sections) (IHC (p))

Product Details

Immunogen:	Recombinant protein encompassing a sequence within the center region of human PSMB8.
Characteristics:	Rabbit polyclonal antibody to PSMB8 (proteasome (prosome, macropain) subunit, beta type, 8 (large multifunctional peptidase 7)) PSMB8 antibody [N2C3]
Purification:	Purified by antigen-affinity chromatography.

Target Details

Target:	PSMB8
Alternative Name:	PSMB8 (PSMB8 Products)
Gene ID:	5696

Target Details

Pathways: [Mitotic G1-G1/S Phases](#), [DNA Replication](#), [Synthesis of DNA](#)

Application Details

Application Notes: WB: 1:500-1:3000, IHC-P: 1:100-1:1000 [suggested antigen retrieval using heat mediated 10 mM Citrate buffer (pH 6.0) or Tris-EDTA buffer (pH 8.0)], ICC/IF: 1:100-1:1000.
Not yet tested in other applications.
Optimal working dilutions should be determined experimentally by the end user.

Restrictions: For Research Use only

Handling

Format: Liquid

Concentration: 0.38 mg/mL

Buffer: 0.1M Tris, 0.1M Glycine, 20 % Glycerol (pH 7).
0.01 % Thimerosal was added as a preservative.

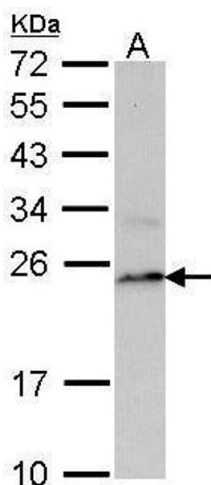
Preservative: Thimerosal (Merthiolate)

Precaution of Use: This product contains Thimerosal (Merthiolate): a POISONOUS AND HAZARDOUS SUBSTANCE which should be handled by trained staff only.

Storage: -20 °C

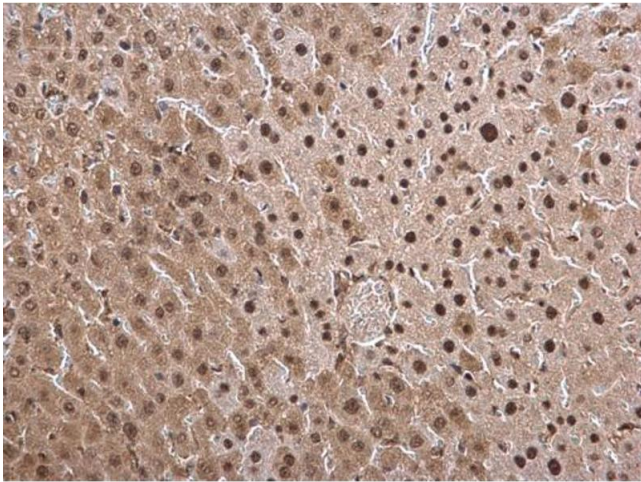
Storage Comment: Keep as concentrated solution. Aliquot and store at -20°C or below.
Avoid multiple freeze-thaw cycles.

Validation report #100014 for Immunofluorescence (IF)



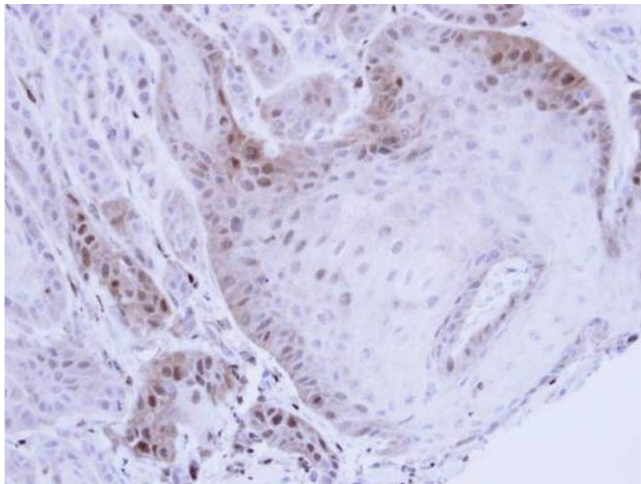
Western Blotting

Image 1. WB Image Sample (30 ug of whole cell lysate) A:
Raji 12% SDS PAGE antibody diluted at 1:1000



Immunohistochemistry

Image 2. IHC-P Image PSMB8 antibody [N2C3] detects PSMB8 protein at cytosol and nucleus on mouse liver by immunohistochemical analysis. Sample: Paraffin-embedded mouse liver. PSMB8 antibody [N2C3] , dilution: 1:250.



Immunohistochemistry

Image 3. IHC-P Image Immunohistochemical analysis of paraffin-embedded Cal27 Xenograft, using PSMB8, antibody at 1:100 dilution.

Please check the [product details page](#) for more images. Overall 4 images are available for ABIN2856915.