

Datasheet for ABIN2856918

**anti-SPR antibody**

## 4 Images

[Go to Product page](#)

## Overview

Quantity:	100 µL
Target:	SPR
Reactivity:	Human
Host:	Rabbit
Clonality:	Polyclonal
Conjugate:	This SPR antibody is un-conjugated
Application:	Western Blotting (WB), Immunofluorescence (IF), Immunoprecipitation (IP), Immunocytochemistry (ICC), Immunohistochemistry (Paraffin-embedded Sections) (IHC (p))

## Product Details

Immunogen:	Recombinant protein encompassing a sequence within the center region of human SPR. The exact sequence is proprietary.
Isotype:	IgG
Cross-Reactivity:	Human, Mouse
Characteristics:	Rabbit Polyclonal antibody to SPR (sepiapterin reductase (7,8-dihydrobiopterin:NADP+ oxidoreductase)) SPR antibody [N2C3]
Purification:	Purified by antigen-affinity chromatography.

## Target Details

Target:	SPR
---------	-----

## Target Details

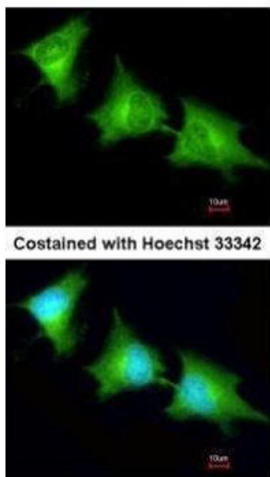
Alternative Name:	sepiapterin reductase ( <a href="#">SPR Products</a> )
Molecular Weight:	28 kDa
Gene ID:	6697
UniProt:	<a href="#">P35270</a>
Pathways:	<a href="#">Regulation of Systemic Arterial Blood Pressure by Hormones</a> , <a href="#">Feeding Behaviour</a> , <a href="#">Smooth Muscle Cell Migration</a>

## Application Details

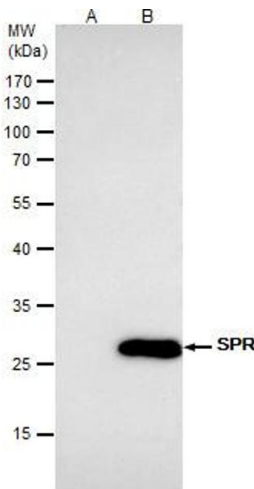
Application Notes:	WB: 1:500-1:3000. ICC/IF: 1:100-1:1000. IHC-P: 1:100-1:1000. IP: 1:100-1:500. Optimal dilutions/concentrations should be determined by the researcher. Not tested in other applications.
Comment:	Positive Control: A431
Restrictions:	For Research Use only

## Handling

Format:	Liquid
Concentration:	1 mg/mL
Buffer:	0.1M Tris-Glycine ( pH 7), 20 % Glycerol, 0.01 % Thimerosal
Preservative:	Thimerosal (Merthiolate)
Precaution of Use:	This product contains Thimerosal (Merthiolate): a POISONOUS AND HAZARDOUS SUBSTANCE which should be handled by trained staff only.
Storage:	4 °C, -20 °C
Storage Comment:	Store as concentrated solution. Centrifuge briefly prior to opening vial. For short-term storage (1-2 weeks), store at 4°C. For long-term storage, aliquot and store at -20°C or below. Avoid multiple freeze-thaw cycles.



Costained with Hoechst 33342



Immunofluorescence

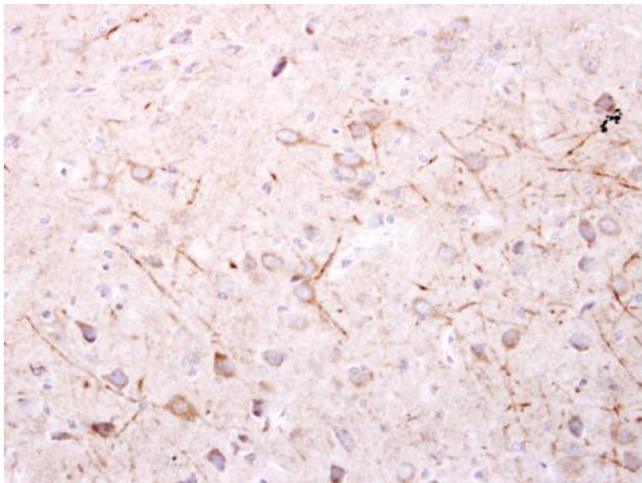
**Image 1.** ICC/IF Image Immunofluorescence analysis of methanol-fixed HeLa, using SPR, antibody at 1:200 dilution.

Immunoprecipitation

**Image 2.** IP Image SPR antibody [N2C3] immunoprecipitates SPR protein in IP experiments. IP samples: A431 whole cell extract A. Control with 4 µg of preimmune Rabbit IgG B. Immunoprecipitation of SPR protein by 4 µg SPR antibody [N2C3] , 5 % SDS-PAGE The immunoprecipitated SPR protein was detected by SPR antibody [N2C3] , diluted at 1:500. [EasyBlot anti-rabbit IgG was used as a secondary reagent]

Immunohistochemistry

**Image 3.** IHC-P Image SPR antibody [N2C3] detects SPR protein at cytosol on mouse fore brain by immunohistochemical analysis. Sample: Paraffin-embedded mouse fore brain. SPR antibody [N2C3] , dilution: 1:500.



Please check the [product details page](#) for more images. Overall 4 images are available for ABIN2856918.