

Datasheet for ABIN2856919

anti-TRIM21 antibody

4 Images

[Go to Product page](#)

Overview

Quantity:	100 µL
Target:	TRIM21
Reactivity:	Human
Host:	Rabbit
Clonality:	Polyclonal
Conjugate:	This TRIM21 antibody is un-conjugated
Application:	Western Blotting (WB), Immunofluorescence (IF), Immunoprecipitation (IP), Immunocytochemistry (ICC), Immunohistochemistry (Paraffin-embedded Sections) (IHC (p))

Product Details

Immunogen:	Recombinant protein encompassing a sequence within the center region of human SSA1. The exact sequence is proprietary.
Isotype:	IgG
Cross-Reactivity:	Human
Characteristics:	Rabbit Polyclonal antibody to SSA1 (tripartite motif-containing 21) SSA1 antibody [C1C3]
Purification:	Purified by antigen-affinity chromatography.

Target Details

Target:	TRIM21
Alternative Name:	tripartite motif containing 21 (TRIM21 Products)

Target Details

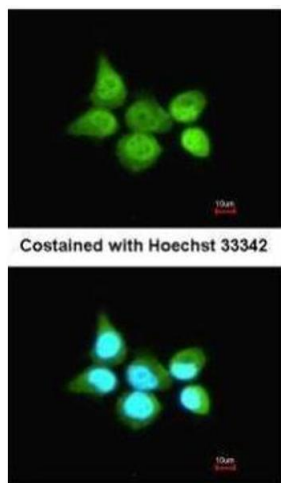
Molecular Weight:	54 kDa
Gene ID:	6737
UniProt:	P19474

Application Details

Application Notes:	WB: 1:500-1:3000. ICC/IF: 1:100-1:1000. IHC-P: 1:100-1:1000. IP: 1:100-1:500. Optimal dilutions/concentrations should be determined by the researcher. Not tested in other applications.
Comment:	Positive Control: TRIM21-transfected 293T Validation: Comparison, Orthogonal, Overexpression
Restrictions:	For Research Use only

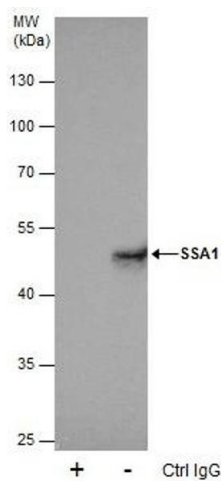
Handling

Format:	Liquid
Concentration:	1.52 mg/mL
Buffer:	1XPBS (pH 7), 20 % Glycerol, 0.025 % ProClin 300
Preservative:	ProClin
Precaution of Use:	This product contains ProClin: a POISONOUS AND HAZARDOUS SUBSTANCE which should be handled by trained staff only.
Storage:	4 °C,-20 °C
Storage Comment:	Store as concentrated solution. Centrifuge briefly prior to opening vial. For short-term storage (1-2 weeks), store at 4°C. For long-term storage, aliquot and store at -20°C or below. Avoid multiple freeze-thaw cycles.



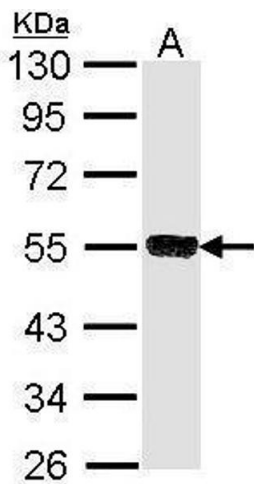
Immunofluorescence

Image 1. ICC/IF Image Immunofluorescence analysis of paraformaldehyde-fixed A431, using SSA1, antibody at 1:200 dilution.



Immunoprecipitation

Image 2. IP Image Immunoprecipitation of SSA1 protein from 293T whole cell extracts using 5 μg of SSA1 antibody [C1C3], Western blot analysis was performed using SSA1 antibody [C1C3], EasyBlot anti-Rabbit IgG was used as a secondary reagent.



Western Blotting

Image 3. WB Image Sample (30 ug of whole cell lysate) A: Molt-4, 10% SDS PAGE antibody diluted at 1:1000

Please check the [product details page](#) for more images. Overall 4 images are available for ABIN2856919.