

Datasheet for ABIN2856921

anti-MVP antibody

5 Images

[Go to Product page](#)

Overview

Quantity:	100 µL
Target:	MVP
Reactivity:	Human
Host:	Rabbit
Clonality:	Polyclonal
Conjugate:	This MVP antibody is un-conjugated
Application:	Western Blotting (WB), Immunofluorescence (IF), Immunohistochemistry (Paraffin-embedded Sections) (IHC (p)), Immunocytochemistry (ICC)

Product Details

Immunogen:	Recombinant protein encompassing a sequence within the center region of human MVP/LRP. The exact sequence is proprietary.
Isotype:	IgG
Cross-Reactivity:	Human, Mouse
Characteristics:	Rabbit Polyclonal antibody to MVP/LRP (major vault protein) MVP/LRP antibody
Purification:	Purified by antigen-affinity chromatography.
Grade:	KO Validated

Target Details

Target:	MVP
---------	-----

Target Details

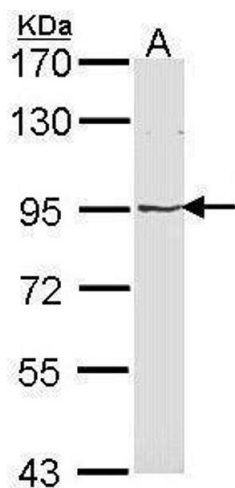
Alternative Name:	major vault protein (MVP Products)
Molecular Weight:	99 kDa
Gene ID:	9961
UniProt:	Q14764

Application Details

Application Notes:	WB: 1:500-1:3000. ICC/IF: 1:100-1:1000. IHC-P: 1:100-1:1000. Optimal dilutions/concentrations should be determined by the researcher. Not tested in other applications.
Comment:	Positive Control: Molt-4 , Neuro2A , GL261 , C8D30 , BCL-1 , Raw264.7 , HeLa Validation: KO/KD
Restrictions:	For Research Use only

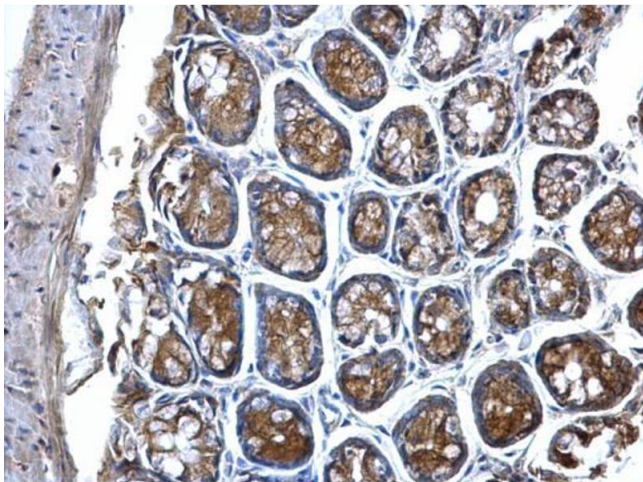
Handling

Format:	Liquid
Concentration:	1 mg/mL
Buffer:	0.1M Tris-Glycine (pH 7), 20 % Glycerol, 0.01 % Thimerosal
Preservative:	Thimerosal (Merthiolate)
Precaution of Use:	This product contains Thimerosal (Merthiolate): a POISONOUS AND HAZARDOUS SUBSTANCE which should be handled by trained staff only.
Storage:	4 °C,-20 °C
Storage Comment:	Store as concentrated solution. Centrifuge briefly prior to opening vial. For short-term storage (1-2 weeks), store at 4°C. For long-term storage, aliquot and store at -20°C or below. Avoid multiple freeze-thaw cycles.



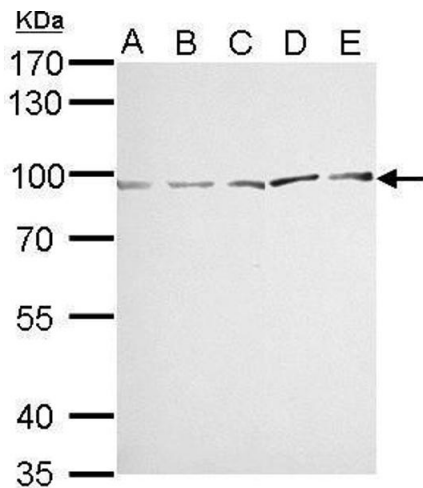
Western Blotting

Image 1. WB Image Sample (30 ug of whole cell lysate) A: Molt-4 , 7.5% SDS PAGE antibody diluted at 1:1000



Immunohistochemistry

Image 2. IHC-P Image MVP/LRP antibody detects MVP/LRP protein at cytosol on mouse colon by immunohistochemical analysis. Sample: Paraffin-embedded mouse colon. MVP/LRP antibody , dilution: 1:500.



Western Blotting

Image 3. WB Image MVP/LRP antibody detects MVP protein by Western blot analysis. A. 30 µg Neuro2A whole cell lysate/extract B. 30 µg GL261 whole cell lysate/extract C. 30 µg C8D30 whole cell lysate/extract D. 30 µg BCL-1 whole cell lysate/extract E. 30 µg Raw264.7 whole cell lysate/extract 7.5 % SDS-PAGE MVP/LRP antibody , dilution: 1:1000

Please check the [product details page](#) for more images. Overall 5 images are available for ABIN2856921.