

Datasheet for ABIN2856922

**anti-SAE1 antibody**

## 7 Images

[Go to Product page](#)

## Overview

Quantity:	100 µL
Target:	SAE1
Reactivity:	Human
Host:	Rabbit
Clonality:	Polyclonal
Application:	Western Blotting (WB), Immunofluorescence (IF), Immunohistochemistry (Paraffin-embedded Sections) (IHC (p)), Immunocytochemistry (ICC), Immunoprecipitation (IP)

## Product Details

Immunogen:	Recombinant protein encompassing a sequence within the center region of human SAE1. The exact sequence is proprietary.
Isotype:	IgG
Cross-Reactivity:	Human, Mouse, Rat
Characteristics:	Rabbit Polyclonal antibody to SAE1 (SUMO1 activating enzyme subunit 1) SAE1 antibody
Purification:	Purified by antigen-affinity chromatography.
Grade:	KO Validated

## Target Details

Target:	SAE1
Alternative Name:	SUMO1 activating enzyme subunit 1 ( <a href="#">SAE1 Products</a> )

## Target Details

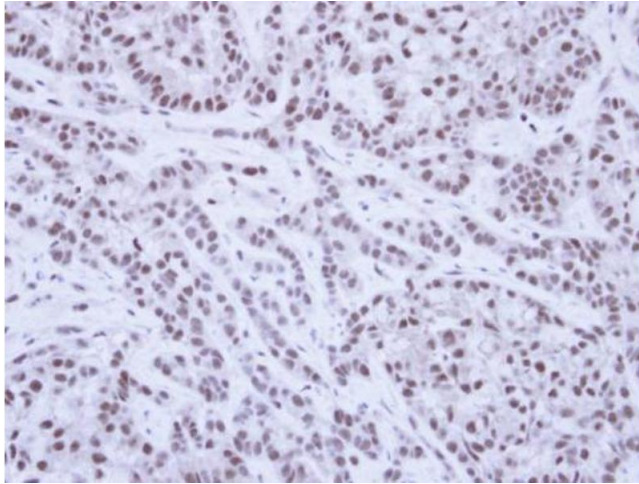
Molecular Weight:	38 kDa
Gene ID:	10055
UniProt:	<a href="#">Q9UBE0</a>

## Application Details

Application Notes:	WB: 1:500-1:3000. ICC/IF: 1:100-1:1000. IHC-P: 1:100-1:1000. IP: 1:100-1:500. Optimal dilutions/concentrations should be determined by the researcher. Not tested in other applications.
Comment:	Positive Control: Mouse brain , Rat2 , A431 , H1299 Validation: KO/KD
Restrictions:	For Research Use only

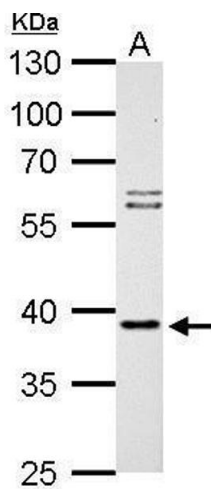
## Handling

Format:	Liquid
Concentration:	0.72 mg/mL
Buffer:	0.1M Tris-Glycine ( pH 7), 20 % Glycerol, 0.01 % Thimerosal
Preservative:	Thimerosal (Merthiolate)
Precaution of Use:	This product contains Thimerosal (Merthiolate): a POISONOUS AND HAZARDOUS SUBSTANCE which should be handled by trained staff only.
Storage:	4 °C,-20 °C
Storage Comment:	Store as concentrated solution. Centrifuge briefly prior to opening vial. For short-term storage (1-2 weeks), store at 4°C. For long-term storage, aliquot and store at -20°C or below. Avoid multiple freeze-thaw cycles.



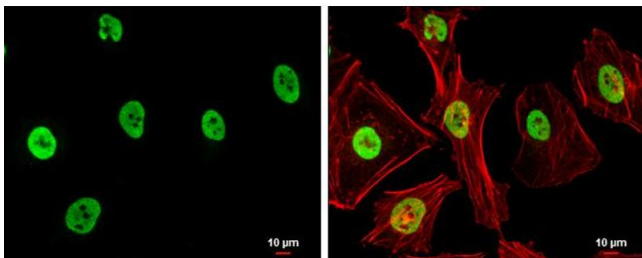
#### Immunohistochemistry

**Image 1.** IHC-P Image Immunohistochemical analysis of paraffin-embedded A549 Xenograft, using SAE1, antibody at 1:100 dilution.



#### Western Blotting

**Image 2.** WB Image SAE1 antibody detects SAE1 protein by Western blot analysis. A. 30 µg Rat2 whole cell lysate/extract 10 % SDS-PAGE SAE1 antibody , dilution: 1:1000



#### Immunofluorescence

**Image 3.** ICC/IF Image SAE1 antibody detects SAE1 protein at nucleus by immunofluorescent analysis. Sample: HeLa cells were fixed in 4% paraformaldehyde at RT for 15 min. Green: SAE1 protein stained by SAE1 antibody , diluted at 1:500. Red: phalloidin, a cytoskeleton marker, diluted at 1:200. Scale bar = 10 µm.

Please check the [product details page](#) for more images. Overall 7 images are available for ABIN2856922.