

Datasheet for ABIN2856923

**anti-NAT1 antibody****2** Images[Go to Product page](#)

## Overview

Quantity:	100 µL
Target:	NAT1
Reactivity:	Human
Host:	Rabbit
Clonality:	Polyclonal
Conjugate:	This NAT1 antibody is un-conjugated
Application:	Western Blotting (WB), Immunohistochemistry (Paraffin-embedded Sections) (IHC (p))

## Product Details

Immunogen:	Recombinant protein encompassing a sequence within the center region of human NAT1. The exact sequence is proprietary.
Isotype:	IgG
Cross-Reactivity:	Human
Characteristics:	Rabbit Polyclonal antibody to NAT1 (N-acetyltransferase 1 (arylamine N-acetyltransferase)) NAT1 antibody [N1C1]
Purification:	Purified by antigen-affinity chromatography.

## Target Details

Target:	NAT1
Alternative Name:	N-acetyltransferase 1 ( <a href="#">NAT1 Products</a> )

## Target Details

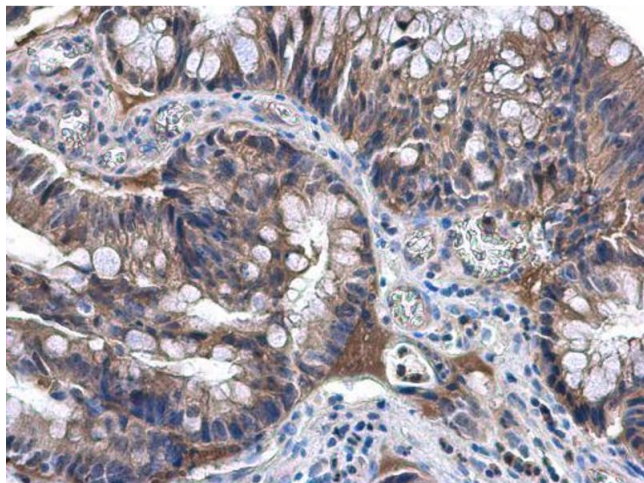
Molecular Weight:	34 kDa
Gene ID:	9
UniProt:	<a href="#">P18440</a>

## Application Details

Application Notes:	WB: 1:500-1:3000. IHC-P: 1:100-1:1000. Optimal dilutions/concentrations should be determined by the researcher. Not tested in other applications.
Comment:	Positive Control: HeLa
Restrictions:	For Research Use only

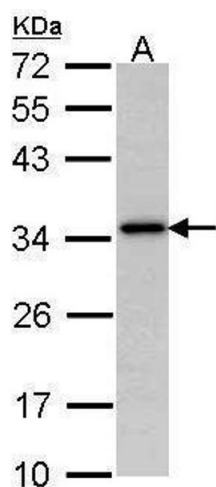
## Handling

Format:	Liquid
Concentration:	0.65 mg/mL
Buffer:	0.1M Tris-Glycine ( pH 7), 20 % Glycerol, 0.01 % Thimerosal
Preservative:	Thimerosal (Merthiolate)
Precaution of Use:	This product contains Thimerosal (Merthiolate): a POISONOUS AND HAZARDOUS SUBSTANCE which should be handled by trained staff only.
Storage:	4 °C,-20 °C
Storage Comment:	Store as concentrated solution. Centrifuge briefly prior to opening vial. For short-term storage (1-2 weeks), store at 4°C. For long-term storage, aliquot and store at -20°C or below. Avoid multiple freeze-thaw cycles.



### Immunohistochemistry

**Image 1.** IHC-P Image NAT1 antibody [N1C1] detects NAT1 protein at cytoplasm in human colon carcinoma by immunohistochemical analysis. Sample: Paraffin-embedded human colon carcinoma. NAT1 antibody [N1C1] , diluted at 1:500.



### Western Blotting

**Image 2.** WB Image Sample (30 ug of whole cell lysate) A: Hela 12% SDS PAGE antibody diluted at 1:1000