

Datasheet for ABIN2856924

anti-ASL antibody[Go to Product page](#)

6 Images

1 Publication

Overview

Quantity:	100 µL
Target:	ASL
Reactivity:	Human
Host:	Rabbit
Clonality:	Polyclonal
Conjugate:	This ASL antibody is un-conjugated
Application:	Western Blotting (WB), Immunofluorescence (IF), Immunohistochemistry (Paraffin-embedded Sections) (IHC (p)), Immunocytochemistry (ICC)

Product Details

Immunogen:	Recombinant protein encompassing a sequence within the center region of human ASL. The exact sequence is proprietary.
Isotype:	IgG
Cross-Reactivity:	Human, Mouse
Characteristics:	Rabbit Polyclonal antibody to ASL (argininosuccinate lyase) ASL antibody
Purification:	Purified by antigen-affinity chromatography.

Target Details

Target:	ASL
Alternative Name:	argininosuccinate lyase (ASL Products)

Target Details

Molecular Weight:	52 kDa
Gene ID:	435
UniProt:	P04424
Pathways:	Response to Growth Hormone Stimulus

Application Details

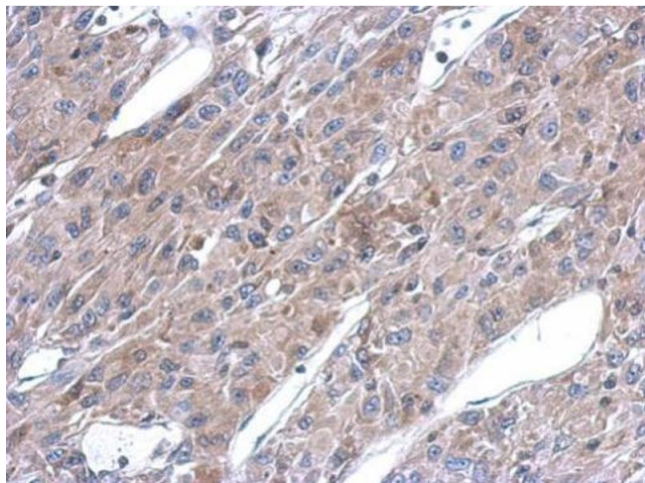
Application Notes:	WB: 1:500-1:3000. ICC/IF: 1:100-1:1000. IHC-P: 1:100-1:1000. Optimal dilutions/concentrations should be determined by the researcher. Not tested in other applications.
Comment:	Positive Control: Neuro2A , GL261 , C8D30 , NIH-3T3 , BCL-1 , Raw264.7 Validation: Orthogonal
Restrictions:	For Research Use only

Handling

Format:	Liquid
Concentration:	0.44 mg/mL
Buffer:	1XPBS (pH 7), 1 % BSA, 20 % Glycerol, 0.025 % ProClin 300
Preservative:	ProClin
Precaution of Use:	This product contains ProClin: a POISONOUS AND HAZARDOUS SUBSTANCE which should be handled by trained staff only.
Storage:	4 °C,-20 °C
Storage Comment:	Store as concentrated solution. Centrifuge briefly prior to opening vial. For short-term storage (1-2 weeks), store at 4°C. For long-term storage, aliquot and store at -20°C or below. Avoid multiple freeze-thaw cycles.

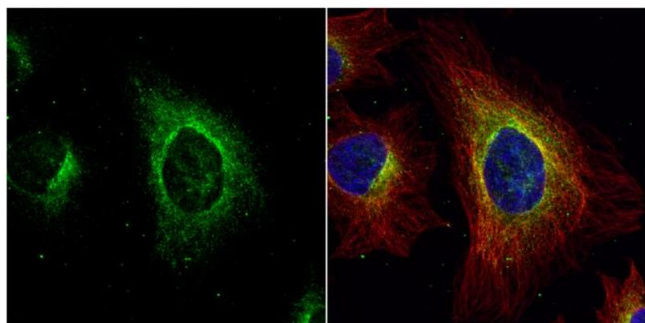
Publications

Product cited in:	Tang, Lee, Kim, Bishop, Rodgers: "siRNA-knockdown of ADAMTS-13 modulates endothelial cell angiogenesis." in: Microvascular research , Vol. 113, pp. 65-70, (2018) (PubMed).
-------------------	------------------------------------------------------------------------------------------------------------------------------------------------------------------------------------------------------



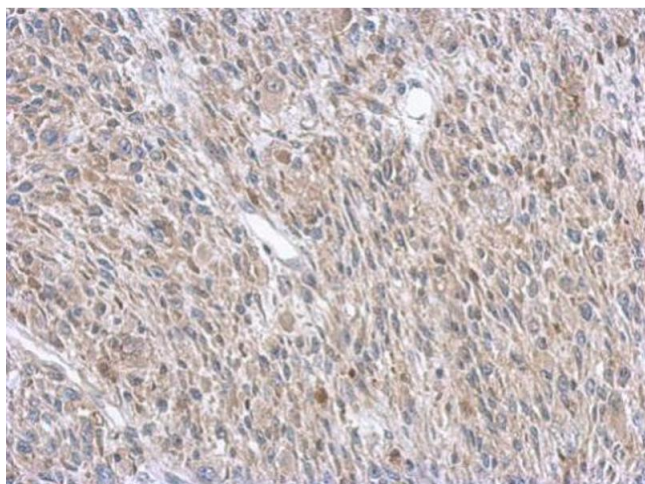
Immunohistochemistry

Image 1. IHC-P Image Immunohistochemical analysis of paraffin-embedded U87 xenograft, using ASL, antibody at 1:500 dilution.



Immunofluorescence

Image 2. ICC/IF Image ASL antibody detects ASL protein at cytoplasm by immunofluorescent analysis. Sample: HeLa cells were fixed in 4% paraformaldehyde at RT for 15 min. Green: ASL protein stained by ASL antibody, diluted at 1:500. Red: alpha Tubulin, a cytoskeleton marker, stained by alpha Tubulin antibody [GT114], diluted at 1:1000. Blue: Hoechst 33342 staining.



Immunohistochemistry

Image 3. IHC-P Image Immunohistochemical analysis of paraffin-embedded C2C12 xenograft, using ASL, antibody at 1:500 dilution.

Please check the [product details page](#) for more images. Overall 6 images are available for ABIN2856924.