

Datasheet for ABIN2856925
anti-Cofilin 2 antibody



[Go to Product page](#)

3 Images

Overview

Quantity:	100 µL
Target:	Cofilin 2 (CFL2)
Reactivity:	Human
Host:	Rabbit
Clonality:	Polyclonal
Conjugate:	This Cofilin 2 antibody is un-conjugated
Application:	Western Blotting (WB), Immunofluorescence (IF), Immunocytochemistry (ICC)

Product Details

Immunogen:	Recombinant protein encompassing a sequence within the center region of human Cofilin 2. The exact sequence is proprietary.
Isotype:	IgG
Cross-Reactivity:	Human, Mouse, Rat
Characteristics:	Rabbit Polyclonal antibody to Cofilin 2 (muscle) (cofilin 2 (muscle)) Cofilin 2 antibody
Purification:	Purified by antigen-affinity chromatography.

Target Details

Target:	Cofilin 2 (CFL2)
Alternative Name:	cofilin 2 (CFL2 Products)

Target Details

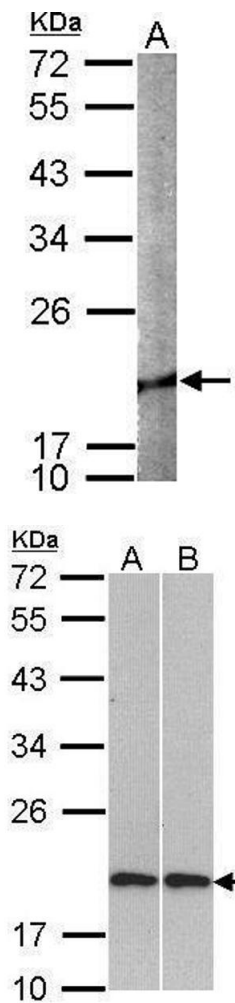
Molecular Weight:	19 kDa
Gene ID:	1073
UniProt:	Q9Y281
Pathways:	Caspase Cascade in Apoptosis

Application Details

Application Notes:	WB: 1:500-1:3000. ICC/IF: 1:100-1:1000. Optimal dilutions/concentrations should be determined by the researcher. Not tested in other applications.
Comment:	Positive Control: Mouse brain , rat heart , H1299 , HCT116
Restrictions:	For Research Use only

Handling

Format:	Liquid
Concentration:	0.28 mg/mL
Buffer:	1XPBS (pH 7), 1 % BSA, 20 % Glycerol, 0.025 % ProClin 300
Preservative:	ProClin
Precaution of Use:	This product contains ProClin: a POISONOUS AND HAZARDOUS SUBSTANCE which should be handled by trained staff only.
Storage:	4 °C,-20 °C
Storage Comment:	Store as concentrated solution. Centrifuge briefly prior to opening vial. For short-term storage (1-2 weeks), store at 4°C. For long-term storage, aliquot and store at -20°C or below. Avoid multiple freeze-thaw cycles.

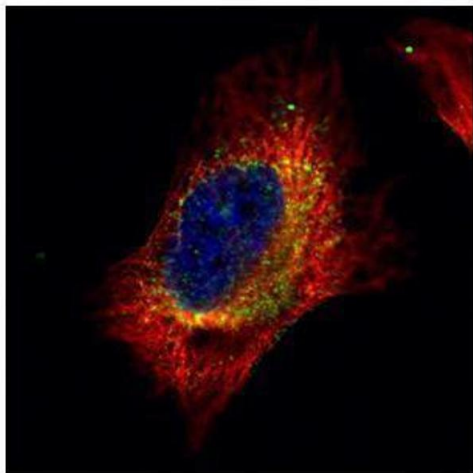


Western Blotting

Image 1. WB Image Sample (50 ug of whole cell lysate) A: mouse brain 12% SDS PAGE antibody diluted at 1:1000

Western Blotting

Image 2. WB Image Sample (30 ug of whole cell lysate) A: H1299 B: Molt-4 , 12% SDS PAGE antibody diluted at 1:1000



Immunofluorescence

Image 3. ICC/IF Image Confocal immunofluorescence analysis (Olympus FV10i) of paraformaldehyde-fixed HeLa, using Cofilin 2 (muscle), antibody (Green) at 1:500 dilution. Alpha-tubulin filaments were labeled with (Red) at 1:2500.