

Datasheet for ABIN2856930  
**anti-LAMC2 antibody**



[Go to Product page](#)

2 Images

Overview

Quantity:	100 µL
Target:	LAMC2
Reactivity:	Human
Host:	Rabbit
Clonality:	Polyclonal
Conjugate:	This LAMC2 antibody is un-conjugated
Application:	Western Blotting (WB), Immunohistochemistry (Paraffin-embedded Sections) (IHC (p))

Product Details

Immunogen:	Recombinant protein encompassing a sequence within the center region of human Laminin gamma 2. The exact sequence is proprietary.
Isotype:	IgG
Cross-Reactivity:	Human
Characteristics:	Rabbit Polyclonal antibody to Laminin gamma 2 (laminin, gamma 2) Laminin gamma 2 antibody [N3C1], Internal
Purification:	Purified by antigen-affinity chromatography.

Target Details

Target:	LAMC2
Alternative Name:	laminin subunit gamma 2 ( <a href="#">LAMC2 Products</a> )

## Target Details

---

Molecular Weight: 131 kDa

Gene ID: 3918

UniProt: [Q13753](#)

## Application Details

---

Application Notes: WB: 1:500-1:3000. IHC-P: 1:100-1:1000. Optimal dilutions/concentrations should be determined by the researcher. Not tested in other applications.

Restrictions: For Research Use only

## Handling

---

Format: Liquid

Concentration: 0.66 mg/mL

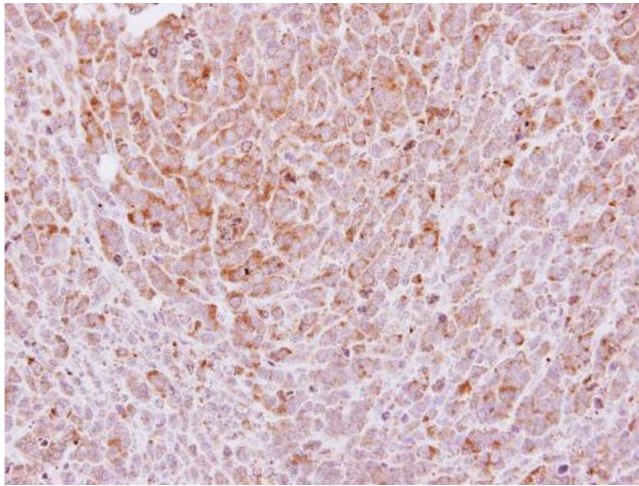
Buffer: 0.1M Tris-Glycine ( pH 7), 20 % Glycerol, 0.01 % Thimerosal

Preservative: Thimerosal (Merthiolate)

Precaution of Use: This product contains Thimerosal (Merthiolate): a POISONOUS AND HAZARDOUS SUBSTANCE which should be handled by trained staff only.

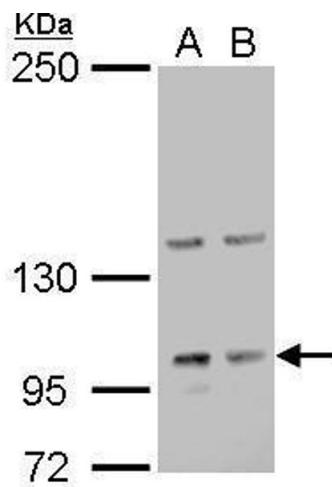
Storage: 4 °C,-20 °C

Storage Comment: Store as concentrated solution. Centrifuge briefly prior to opening vial. For short-term storage (1-2 weeks), store at 4°C. For long-term storage, aliquot and store at -20°C or below. Avoid multiple freeze-thaw cycles.



### Immunohistochemistry

**Image 1.** IHC-P Image Immunohistochemical analysis of paraffin-embedded BT483 xenograft, using Laminin gamma 2, antibody at 1:250 dilution.



### Western Blotting

**Image 2.** WB Image Laminin gamma 2 antibody detects Laminin gamma 2 protein by Western blot analysis. A. 30 µg Raji whole cell lysate/extract B. 30 µg NCI-H929 whole cell lysate/extract 5 % SDS-PAGE Laminin gamma 2 antibody , dilution: 1:1000