

Datasheet for ABIN2856931  
**anti-NDUFS1 antibody (Center)**

## 5 Images

[Go to Product page](#)

## Overview

Quantity:	100 µL
Target:	NDUFS1
Binding Specificity:	Center
Reactivity:	Human, Rat, Mouse
Host:	Rabbit
Clonality:	Polyclonal
Conjugate:	This NDUFS1 antibody is un-conjugated
Application:	Western Blotting (WB), Immunofluorescence (IF), Immunocytochemistry (ICC), Immunohistochemistry (Paraffin-embedded Sections) (IHC (p))

## Product Details

Immunogen:	Recombinant protein encompassing a sequence within the center region of human NDUFS1.
Characteristics:	Rabbit Polyclonal antibody to NDUFS1 (NADH dehydrogenase (ubiquinone) Fe-S protein 1, 75 kDa (NADH-coenzyme Q reductase)) NDUFS1 antibody
Purification:	Purified by antigen-affinity chromatography.

## Target Details

Target:	NDUFS1
Alternative Name:	NDUFS1 ( <a href="#">NDUFS1 Products</a> )
Gene ID:	4719

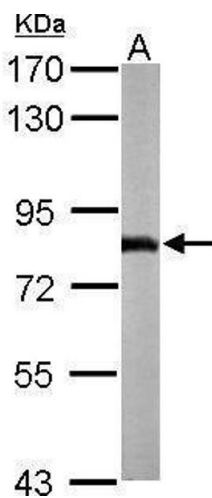
Application Details

Application Notes:	WB: 1:500-1:3000, IHC-P: 1:100-1:1000[suggested antigen retrieval using heat mediated 10 mM Citrate buffer ( pH 6.0) or Tris-EDTA buffer ( pH 8.0)], ICC/IF: 1:100-1:1000.  Not yet tested in other applications.  Optimal working dilutions should be determined experimentally by the end user.
Restrictions:	For Research Use only

Handling

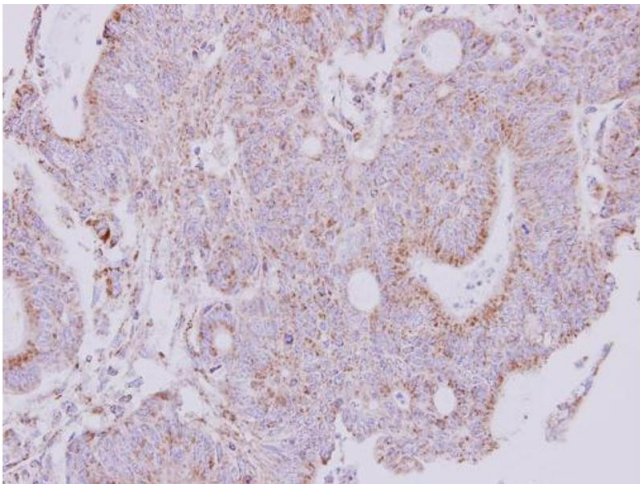
Format:	Liquid
Concentration:	0.84 mg/mL
Buffer:	0.1M Tris, 0.1M Glycine, 20 % Glycerol ( pH 7).  0.01 % Thimerosal was added as a preservative.
Preservative:	Thimerosal (Merthiolate)
Precaution of Use:	This product contains Thimerosal (Merthiolate): a POISONOUS AND HAZARDOUS SUBSTANCE which should be handled by trained staff only.
Storage:	-20 °C
Storage Comment:	Keep as concentrated solution. Aliquot and store at -20°C or below.  Avoid multiple freeze-thaw cycles.

Validation report #101404 for ELISA (ELISA)



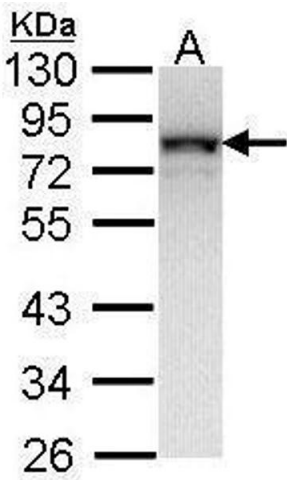
**Western Blotting**

**Image 1.** WB Image Sample (50 ug of whole cell lysate) A: Mouse brain 7.5% SDS PAGE antibody diluted at 1:1000



**Immunohistochemistry**

**Image 2.** IHC-P Image Immunohistochemical analysis of paraffin-embedded human colon carcinoma, using NDUFS1, antibody at 1:250 dilution.



**Western Blotting**

**Image 3.** WB Image Sample (30 ug of whole cell lysate) A: Molt-4 , 12% SDS PAGE antibody diluted at 1:1000

Please check the [product details page](#) for more images. Overall 5 images are available for ABIN2856931.