



[Go to Product page](#)

Datasheet for ABIN2856935  
**anti-Cullin 7 antibody (C-Term)**

4 Images

Overview

Quantity:	100 µL
Target:	Cullin 7 (CUL7)
Binding Specificity:	C-Term
Reactivity:	Human
Host:	Rabbit
Clonality:	Polyclonal
Conjugate:	This Cullin 7 antibody is un-conjugated
Application:	Western Blotting (WB), Immunoprecipitation (IP), Immunohistochemistry (Paraffin-embedded Sections) (IHC (p)), Immunofluorescence (IF), Immunocytochemistry (ICC)

Product Details

Immunogen:	Recombinant protein encompassing a sequence within the C-terminus region of human Cullin 7. The exact sequence is proprietary.
Isotype:	IgG
Cross-Reactivity:	Human
Characteristics:	Rabbit Polyclonal antibody to Cullin 7 (cullin 7) Cullin 7 antibody [C2C3], C-term
Purification:	Purified by antigen-affinity chromatography.

Target Details

Target:	Cullin 7 (CUL7)
---------	-----------------

## Target Details

---

Alternative Name: [cullin 7 \(CUL7 Products\)](#)

Molecular Weight: 191 kDa

Gene ID: 9820

UniProt: [Q14999](#)

Pathways: [ER-Nucleus Signaling](#)

## Application Details

---

Application Notes: WB: 1:500-1:3000. ICC/IF: 1:100-1:1000. IHC-P: 1:100-1:1000. Optimal dilutions/concentrations should be determined by the researcher. Not tested in other applications.

Comment: Positive Control: Molt-4

Restrictions: For Research Use only

## Handling

---

Format: Liquid

Concentration: 0.84 mg/mL

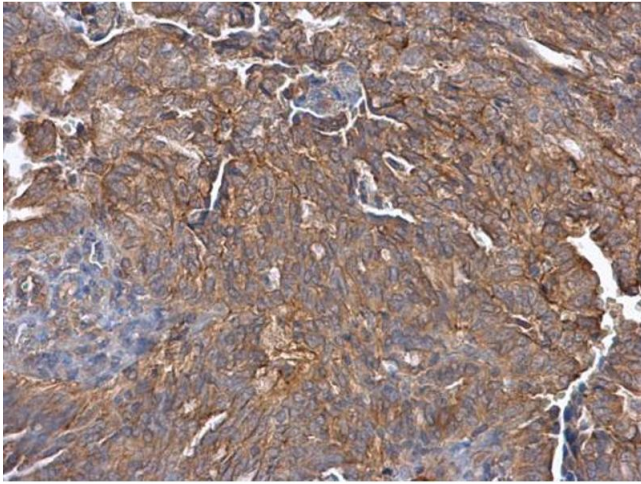
Buffer: 0.1M Tris-Glycine ( pH 7), 20 % Glycerol, 0.01 % Thimerosal

Preservative: Thimerosal (Merthiolate)

Precaution of Use: This product contains Thimerosal (Merthiolate): a POISONOUS AND HAZARDOUS SUBSTANCE which should be handled by trained staff only.

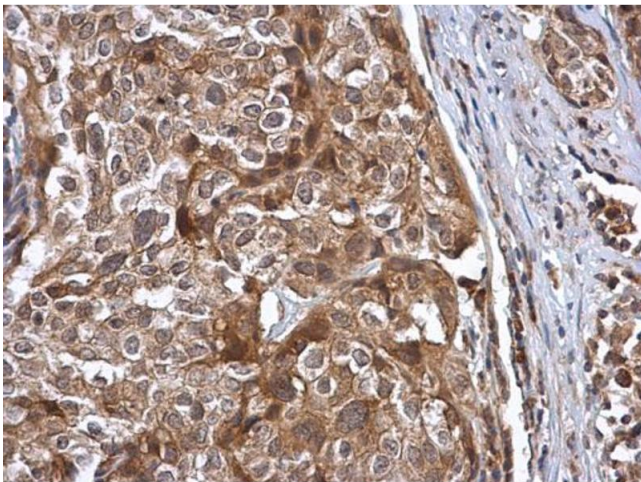
Storage: 4 °C,-20 °C

Storage Comment: Store as concentrated solution. Centrifuge briefly prior to opening vial. For short-term storage (1-2 weeks), store at 4°C. For long-term storage, aliquot and store at -20°C or below. Avoid multiple freeze-thaw cycles.



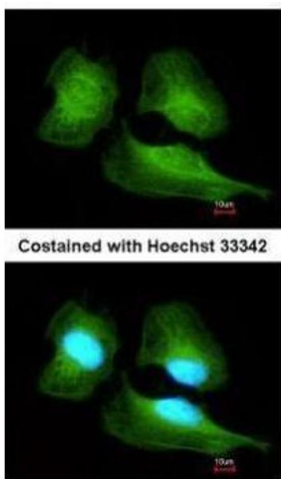
#### Immunohistochemistry

**Image 1.** IHC-P Image Cullin 7 antibody [C2C3], C-term detects Cullin 7 protein at cytoplasm in human endometrial carcinoma by immunohistochemical analysis. Sample: Paraffin-embedded human endometrial carcinoma. Cullin 7 antibody [C2C3], C-term , diluted at 1:500.



#### Immunohistochemistry

**Image 2.** IHC-P Image Cullin 7 antibody [C2C3], C-term detects Cullin 7 protein at cytoplasm in human cervical carcinoma by immunohistochemical analysis. Sample: Paraffin-embedded human cervical carcinoma. Cullin 7 antibody [C2C3], C-term , diluted at 1:500.



#### Immunofluorescence

**Image 3.** ICC/IF Image Immunofluorescence analysis of methanol-fixed HeLa, using Cullin 7, antibody at 1:200 dilution.

Please check the [product details page](#) for more images. Overall 4 images are available for ABIN2856935.