



[Go to Product page](#)

Datasheet for ABIN2856936  
**anti-THO Complex 4 antibody**

5 Images

### Overview

Quantity:	100 µL
Target:	THO Complex 4 (THOC4)
Reactivity:	Human
Host:	Rabbit
Clonality:	Polyclonal
Conjugate:	This THO Complex 4 antibody is un-conjugated
Application:	Western Blotting (WB), Immunofluorescence (IF), Immunoprecipitation (IP), Immunohistochemistry (Paraffin-embedded Sections) (IHC (p)), Immunocytochemistry (ICC)

### Product Details

Immunogen:	Recombinant protein encompassing a sequence within the center region of human ALY. The exact sequence is proprietary.
Isotype:	IgG
Specificity:	Knockdown/Knockout validation was supported by references (PMID: 33991457).
Cross-Reactivity:	Human, Mouse
Characteristics:	Rabbit Polyclonal antibody to ALY (THO complex 4) ALY antibody
Purification:	Purified by antigen-affinity chromatography.

### Target Details

Target:	THO Complex 4 (THOC4)
---------	-----------------------

## Target Details

---

Alternative Name: Aly/REF export factor ([THOC4 Products](#))

Molecular Weight: 27 kDa

Gene ID: 10189

UniProt: [Q86V81](#)

## Application Details

---

Application Notes: WB: 1:500-1:3000. ICC/IF: 1:100-1:1000. IHC-P: 1:100-1:1000. Optimal dilutions/concentrations should be determined by the researcher. Not tested in other applications.

Comment: Positive Control: Mouse brain , 293T , A431 , HeLa , HepG2

Restrictions: For Research Use only

## Handling

---

Format: Liquid

Concentration: 0.63 mg/mL

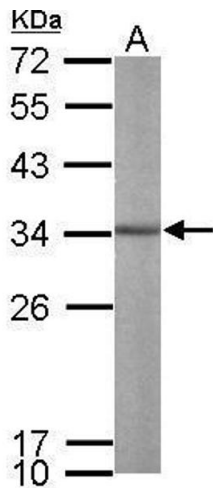
Buffer: 0.1M Tris-Glycine ( pH 7), 10 % Glycerol, 0.01 % Thimerosal

Preservative: Thimerosal (Merthiolate)

Precaution of Use: This product contains Thimerosal (Merthiolate): a POISONOUS AND HAZARDOUS SUBSTANCE which should be handled by trained staff only.

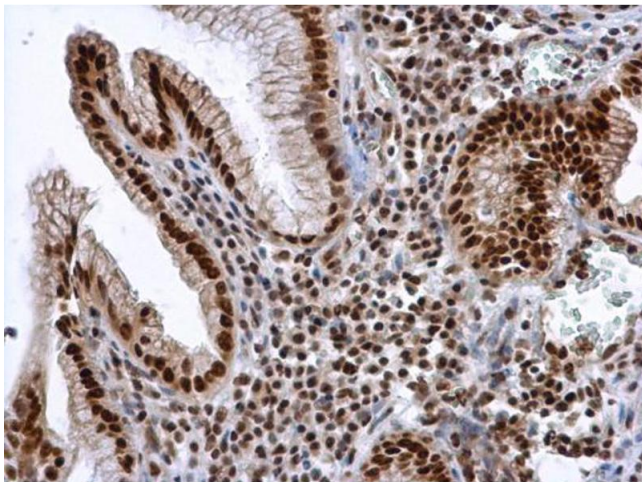
Storage: 4 °C,-20 °C

Storage Comment: Store as concentrated solution. Centrifuge briefly prior to opening vial. For short-term storage (1-2 weeks), store at 4°C. For long-term storage, aliquot and store at -20°C or below. Avoid multiple freeze-thaw cycles.



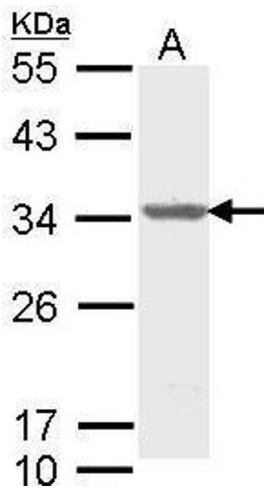
#### Western Blotting

**Image 1.** WB Image Sample (50 ug of whole cell lysate) A: mouse brain 12% SDS PAGE antibody diluted at 1:1000



#### Immunohistochemistry

**Image 2.** IHC-P Image ALY antibody detects ALY protein at nucleus in human esophageal cancer by immunohistochemical analysis. Sample: Paraffin-embedded human esophageal cancer. ALY antibody, diluted at 1:500.



#### Western Blotting

**Image 3.** WB Image Sample (30 ug of whole cell lysate) A: Molt-4, 12% SDS PAGE antibody diluted at 1:1000

Please check the [product details page](#) for more images. Overall 5 images are available for ABIN2856936.