



[Go to Product page](#)

Datasheet for ABIN2856937  
**anti-PIM2 antibody (Center)**

3 Images

### Overview

Quantity:	100 µL
Target:	PIM2
Binding Specificity:	Center
Reactivity:	Human, Mouse
Host:	Rabbit
Clonality:	Polyclonal
Conjugate:	This PIM2 antibody is un-conjugated
Application:	Western Blotting (WB), Immunoprecipitation (IP), Immunofluorescence (IF), Immunohistochemistry (Paraffin-embedded Sections) (IHC (p)), Immunocytochemistry (ICC)

### Product Details

Immunogen:	Recombinant protein encompassing a sequence within the center region of human PIM2.
Characteristics:	Rabbit Polyclonal antibody to PIM2 (pim-2 oncogene) PIM2 antibody
Purification:	Purified by antigen-affinity chromatography.

### Target Details

Target:	PIM2
Alternative Name:	PIM2 ( <a href="#">PIM2 Products</a> )
Gene ID:	11040

## Application Details

---

Application Notes: WB: 1:500-1:3000, IHC-P: 1:100-1:1000 [suggested antigen retrieval using heat mediated 10 mM Citrate buffer ( pH 6.0) or Tris-EDTA buffer ( pH 8.0)].  
Not yet tested in other applications.  
Optimal working dilutions should be determined experimentally by the end user.

---

Restrictions: For Research Use only

---

## Handling

---

Format: Liquid

---

Concentration: 1 mg/mL

---

Buffer: 0.1M Tris, 0.1M Glycine, 20 % Glycerol ( pH 7).  
0.01 % Thimerosal was added as a preservative.

---

Preservative: Thimerosal (Merthiolate)

---

Precaution of Use: This product contains Thimerosal (Merthiolate): a POISONOUS AND HAZARDOUS SUBSTANCE which should be handled by trained staff only.

---

Storage: -20 °C

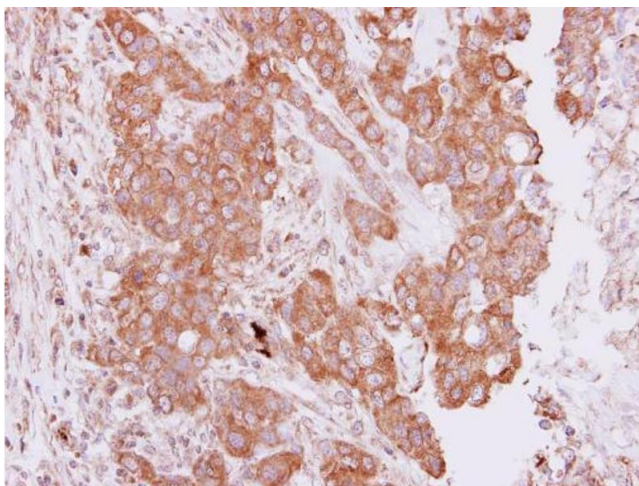
---

Storage Comment: Keep as concentrated solution. Aliquot and store at -20°C or below.  
Avoid multiple freeze-thaw cycles.

---

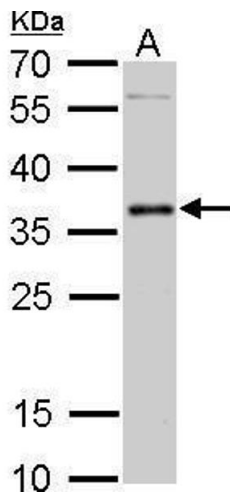
## Validation report #101746 for Immunofluorescence (IF)

---



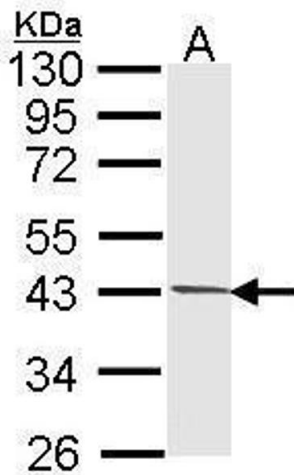
### Immunohistochemistry

**Image 1.** IHC-P Image Immunohistochemical analysis of paraffin-embedded human breast cancer, using PIM2, antibody at 1:250 dilution.



### Western Blotting

**Image 2.** WB Image PIM2 antibody detects PIM2 protein by Western blot analysis. A. 50  $\mu$ g mouse testis lysate/extract  
12 % SDS-PAGE PIM2 antibody , dilution: 1:500



### Western Blotting

**Image 3.** WB Image Sample (30 ug of whole cell lysate) A:  
293T 10% SDS PAGE antibody diluted at 1:1000