

Datasheet for ABIN2856938

anti-TRIM32 antibody**3** Images[Go to Product page](#)

Overview

Quantity:	100 µL
Target:	TRIM32
Reactivity:	Human
Host:	Rabbit
Clonality:	Polyclonal
Conjugate:	This TRIM32 antibody is un-conjugated
Application:	Western Blotting (WB), Immunohistochemistry (Paraffin-embedded Sections) (IHC (p)), Immunofluorescence (IF), Immunocytochemistry (ICC)

Product Details

Immunogen:	Recombinant protein encompassing a sequence within the center region of human TRIM32. The exact sequence is proprietary.
Isotype:	IgG
Cross-Reactivity:	Human, Mouse
Characteristics:	Rabbit Polyclonal antibody to TRIM32 (tripartite motif containing 32) TRIM32 antibody
Purification:	Purified by antigen-affinity chromatography.

Target Details

Target:	TRIM32
Alternative Name:	tripartite motif containing 32 (TRIM32 Products)

Target Details

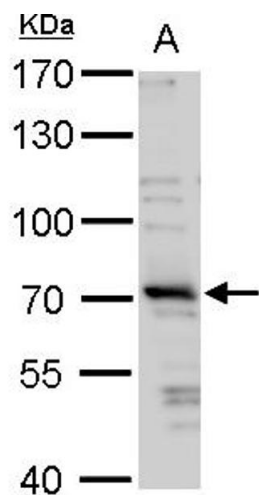
Molecular Weight:	72 kDa
Gene ID:	22954
UniProt:	Q13049
Pathways:	Negative Regulation of intrinsic apoptotic Signaling

Application Details

Application Notes:	WB: 1:500-1:20000. ICC/IF: 1:100-1:1000. IHC-P: 1:100-1:1000. Optimal dilutions/concentrations should be determined by the researcher. Not tested in other applications.
Comment:	Positive Control: DDDDK-human TRIM32-transfected 293T cells Validation: Overexpression
Restrictions:	For Research Use only

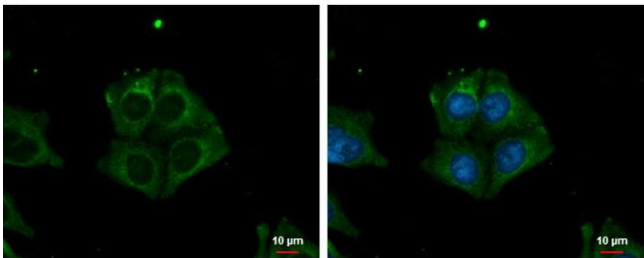
Handling

Format:	Liquid
Concentration:	1 mg/mL
Buffer:	1XPBS (pH 7), 1 % BSA, 20 % Glycerol, 0.01 % Thimerosal
Preservative:	Thimerosal (Merthiolate)
Precaution of Use:	This product contains Thimerosal (Merthiolate): a POISONOUS AND HAZARDOUS SUBSTANCE which should be handled by trained staff only.
Storage:	4 °C,-20 °C
Storage Comment:	Store as concentrated solution. Centrifuge briefly prior to opening vial. For short-term storage (1-2 weeks), store at 4°C. For long-term storage, aliquot and store at -20°C or below. Avoid multiple freeze-thaw cycles.



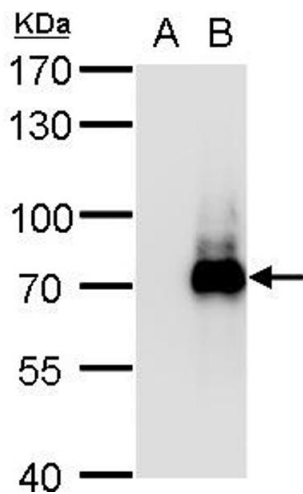
Western Blotting

Image 1. WB Image TRIM32 antibody detects TRIM32 protein by western blot analysis. A. 30 µg 293T whole cell lysate/extract 7.5 % SDS-PAGE TRIM32 antibody , dilution: 1:1000



Immunofluorescence

Image 2. ICC/IF Image TRIM32 antibody detects TRIM32 protein at cytoplasm by immunofluorescent analysis. Sample: A375 cells were fixed in ice-cold MeOH for 5 min. Green: TRIM32 protein stained by TRIM32 antibody , diluted at 1:500. Blue: Hoechst 33342 staining. Scale bar = 10 µm.



Western Blotting

Image 3. WB Image TRIM32 antibody detects TRIM32 protein by western blot analysis. A. 5 µg 293T whole cell lysate/extract B. 5 µg whole cell lysate/extract of D4DDK-human TRIM32-transfected 293T cells 7.5 % SDS-PAGE TRIM32 antibody , dilution: 1:20000