

Datasheet for ABIN2856953

**anti-RGS4 antibody**

## 5 Images

[Go to Product page](#)

## Overview

Quantity:	100 µL
Target:	RGS4
Reactivity:	Human
Host:	Rabbit
Clonality:	Polyclonal
Conjugate:	This RGS4 antibody is un-conjugated
Application:	Western Blotting (WB), Immunohistochemistry (Paraffin-embedded Sections) (IHC (p))

## Product Details

Immunogen:	Recombinant protein encompassing a sequence within the center region of human RGS4. The exact sequence is proprietary.
Isotype:	IgG
Cross-Reactivity:	Human, Rat
Characteristics:	Rabbit Polyclonal antibody to RGS4 (regulator of G-protein signaling 4) RGS4 antibody
Purification:	Purified by antigen-affinity chromatography.

## Target Details

Target:	RGS4
Alternative Name:	regulator of G protein signaling 4 ( <a href="#">RGS4 Products</a> )

## Target Details

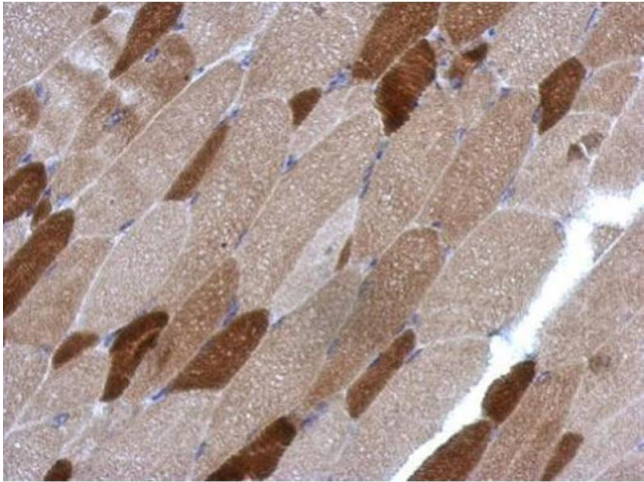
Molecular Weight:	23 kDa
Gene ID:	5999
UniProt:	<a href="#">P49798</a>
Pathways:	<a href="#">Myometrial Relaxation and Contraction, Regulation of G-Protein Coupled Receptor Protein Signaling</a>

## Application Details

Application Notes:	WB: 1:500-1:3000. IHC-P: 1:100-1:1000. Optimal dilutions/concentrations should be determined by the researcher. Not tested in other applications.
Comment:	Positive Control: rat brain
Restrictions:	For Research Use only

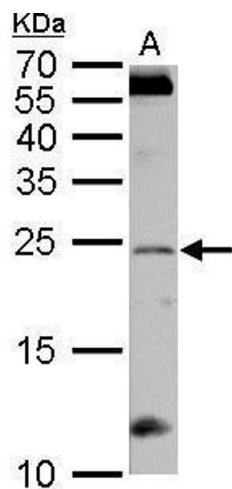
## Handling

Format:	Liquid
Concentration:	1.21 mg/mL
Buffer:	1XPBS ( pH 7), 20 % Glycerol, 0.025 % ProClin 300
Preservative:	ProClin
Precaution of Use:	This product contains ProClin: a POISONOUS AND HAZARDOUS SUBSTANCE which should be handled by trained staff only.
Storage:	4 °C,-20 °C
Storage Comment:	Store as concentrated solution. Centrifuge briefly prior to opening vial. For short-term storage (1-2 weeks), store at 4°C. For long-term storage, aliquot and store at -20°C or below. Avoid multiple freeze-thaw cycles.



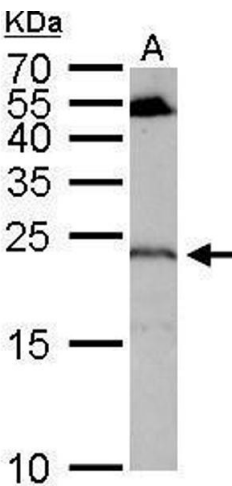
### Immunohistochemistry

**Image 1.** IHC-P Image Immunohistochemical analysis of paraffin-embedded mouse muscle, using RGS4, antibody at 1:500 dilution.



### Western Blotting

**Image 2.** WB Image RGS4 antibody detects RGS4 protein by Western blot analysis. A. 50 µg rat brain lysate/extract 12 % SDS-PAGE RGS4 antibody , dilution: 1:1000



### Western Blotting

**Image 3.** WB Image RGS4 antibody detects RGS4 protein by Western blot analysis. A. 50 µg mouse cerebellum lysate/extract 12 % SDS-PAGE RGS4 antibody , dilution: 1:1000

Please check the [product details page](#) for more images. Overall 5 images are available for ABIN2856953.