

Datasheet for ABIN2856955
anti-rala antibody (Center)

3 Images

[Go to Product page](#)

Overview

Quantity:	100 µL
Target:	rala
Binding Specificity:	Center
Reactivity:	Human, Mouse, Rat
Host:	Rabbit
Clonality:	Polyclonal
Conjugate:	This rala antibody is un-conjugated
Application:	Western Blotting (WB)

Product Details

Immunogen:	Recombinant protein encompassing a sequence within the center region of human RALA.
Characteristics:	Rabbit Polyclonal antibody to RALA (v-ral simian leukemia viral oncogene homolog A (ras related)) RALA antibody
Purification:	Purified by antigen-affinity chromatography.

Target Details

Target:	rala
Alternative Name:	RALA (rala Products)
Gene ID:	5898

Target Details

Pathways: [Neurotrophin Signaling Pathway](#), [SARS-CoV-2 Protein Interactome](#)

Application Details

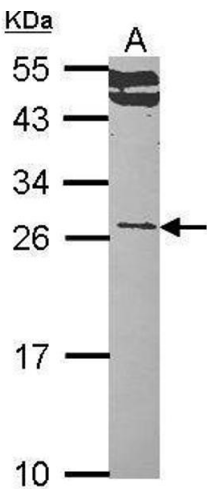
Application Notes:	WB: 1:500-1:3000. Not yet tested in other applications. Optimal working dilutions should be determined experimentally by the end user.
--------------------	--

Restrictions: For Research Use only

Handling

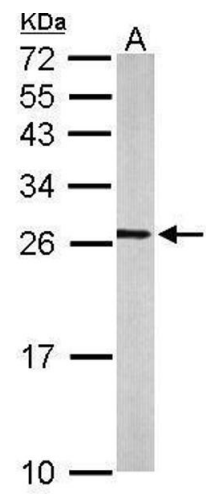
Format:	Liquid
Concentration:	0.55 mg/mL
Buffer:	0.1M Tris, 0.1M Glycine, 20 % Glycerol (pH 7). 0.01 % Thimerosal was added as a preservative.
Preservative:	Thimerosal (Merthiolate)
Precaution of Use:	This product contains Thimerosal (Merthiolate): a POISONOUS AND HAZARDOUS SUBSTANCE which should be handled by trained staff only.
Storage:	-20 °C
Storage Comment:	Keep as concentrated solution. Aliquot and store at -20°C or below. Avoid multiple freeze-thaw cycles.

Validation report #101404 for ELISA (ELISA)



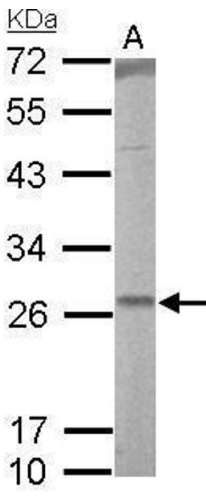
Western Blotting

Image 1. WB Image Sample (30 ug of whole cell lysate) A: Hep G2 , 12% SDS PAGE RALA antibody antibody diluted at 1:1000



Western Blotting

Image 2. WB Image Sample (50 ug of whole cell lysate) A: mouse brain 12% SDS PAGE antibody diluted at 1:500



Western Blotting

Image 3. WB Image RALA antibody detects RALA protein by Western blot analysis. A. 50 µg rat lung lysate/extract 12 % SDS-PAGE RALA antibody , dilution: 1:1000