

Datasheet for ABIN2856956
anti-ALPPL2 antibody (Center)



[Go to Product page](#)

4 Images

Overview

Quantity:	100 µL
Target:	ALPPL2
Binding Specificity:	Center
Reactivity:	Human
Host:	Rabbit
Clonality:	Polyclonal
Conjugate:	This ALPPL2 antibody is un-conjugated
Application:	Western Blotting (WB), Immunohistochemistry (Paraffin-embedded Sections) (IHC (p)), Immunocytochemistry (ICC), Immunofluorescence (IF), Immunoelectron Microscopy (IEM)

Product Details

Immunogen:	Recombinant protein encompassing a sequence within the center region of human ALPPL2.
Characteristics:	Rabbit Polyclonal antibody to ALPPL2 (alkaline phosphatase, placental-like 2) ALPPL2 antibody
Purification:	Purified by antigen-affinity chromatography.

Target Details

Target:	ALPPL2
Alternative Name:	ALPPL2 (ALPPL2 Products)
Gene ID:	251

Application Details

Application Notes: WB: 1:500-1:3000, IHC-P: 1:100-1:1000 [suggested antigen retrieval using heat mediated 10 mM Citrate buffer (pH 6.0) or Tris-EDTA buffer (pH 8.0)], ICC/IF: 1:100-1:1000.
Not yet tested in other applications.
Optimal working dilutions should be determined experimentally by the end user.

Restrictions: For Research Use only

Handling

Format: Liquid

Concentration: 1 mg/mL

Buffer: 0.1M Tris, 0.1M Glycine, 20 % Glycerol (pH 7).
0.01 % Thimerosal was added as a preservative.

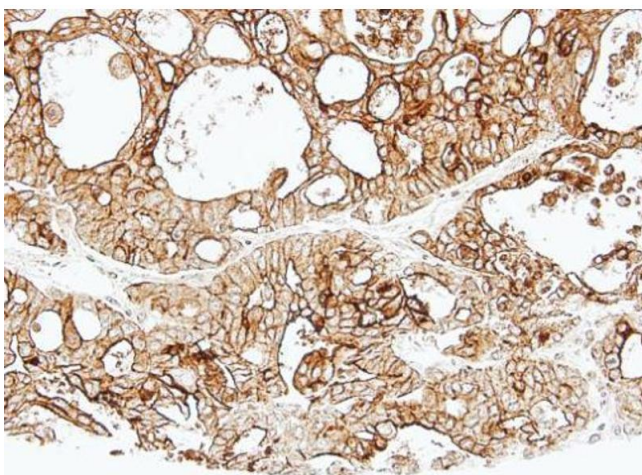
Preservative: Thimerosal (Merthiolate)

Precaution of Use: This product contains Thimerosal (Merthiolate): a POISONOUS AND HAZARDOUS SUBSTANCE which should be handled by trained staff only.

Storage: -20 °C

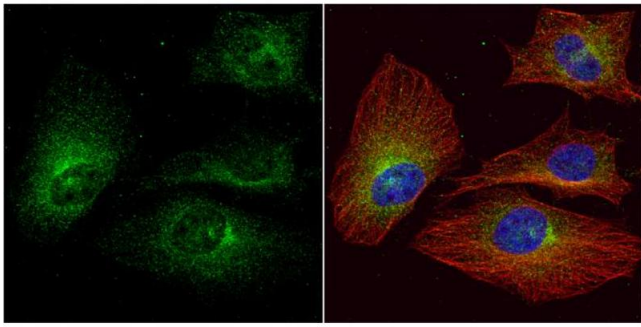
Storage Comment: Keep as concentrated solution. Aliquot and store at -20°C or below.
Avoid multiple freeze-thaw cycles.

Validation report #101746 for Immunofluorescence (IF)



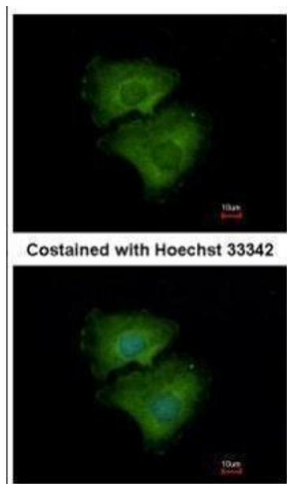
Immunohistochemistry

Image 1. IHC-P Image Immunohistochemical analysis of paraffin-embedded human Breast, using ALPPL2, antibody at 1:500 dilution.



Immunofluorescence

Image 2. ICC/IF Image ALPPL2 antibody detects ALPPL2 protein at cytoplasm by immunofluorescent analysis. Sample: HeLa cells were fixed in 4% paraformaldehyde at RT for 15 min. Green: ALPPL2 protein stained by ALPPL2 antibody , diluted at 1:1000. Red: alpha Tubulin, a cytoskeleton marker, stained by alpha Tubulin antibody [GT114] , diluted at 1:1000. Blue: Hoechst 33342 staining.



Immunofluorescence

Image 3. ICC/IF Image Immunofluorescence analysis of methanol-fixed A549, using ALPPL2, antibody at 1:500 dilution.

Please check the [product details page](#) for more images. Overall 4 images are available for ABIN2856956.