

Datasheet for ABIN2856957

anti-ASNA1 antibody

4 Images

[Go to Product page](#)

Overview

Quantity:	100 µL
Target:	ASNA1
Reactivity:	Human
Host:	Rabbit
Clonality:	Polyclonal
Conjugate:	This ASNA1 antibody is un-conjugated
Application:	Western Blotting (WB), Immunofluorescence (IF), Immunohistochemistry (Paraffin-embedded Sections) (IHC (p)), Immunocytochemistry (ICC)

Product Details

Immunogen:	Recombinant protein encompassing a sequence within the center region of human ASNA1. The exact sequence is proprietary.
Isotype:	IgG
Cross-Reactivity:	Human, Mouse
Characteristics:	Rabbit Polyclonal antibody to ASNA1 (arsA arsenite transporter, ATP-binding, homolog 1 (bacterial)) ASNA1 antibody
Purification:	Purified by antigen-affinity chromatography.

Target Details

Target:	ASNA1
---------	-------

Target Details

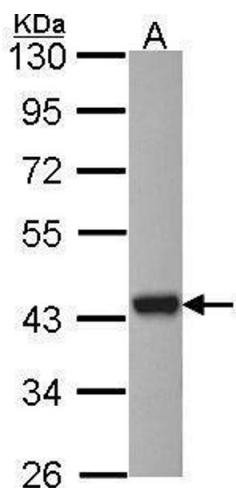
Alternative Name:	arsA arsenite transporter, ATP-binding, homolog 1 (bacterial) (ASNA1 Products)
Molecular Weight:	39 kDa
Gene ID:	439
UniProt:	O43681
Pathways:	Positive Regulation of Peptide Hormone Secretion

Application Details

Application Notes:	WB: 1:500-1:3000. ICC/IF: 1:100-1:1000. IHC-P: 1:100-1:1000. Optimal dilutions/concentrations should be determined by the researcher. Not tested in other applications.
Comment:	Positive Control: Mouse brain , HCT116
Restrictions:	For Research Use only

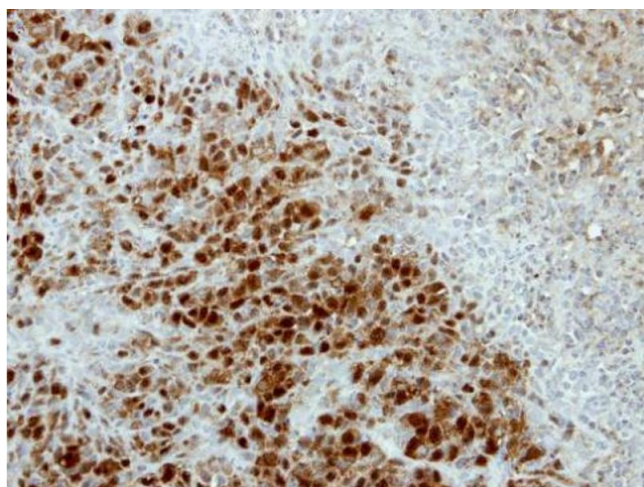
Handling

Format:	Liquid
Concentration:	0.76 mg/mL
Buffer:	0.1M Tris-Glycine (pH 7), 20 % Glycerol, 0.01 % Thimerosal
Preservative:	Thimerosal (Merthiolate)
Precaution of Use:	This product contains Thimerosal (Merthiolate): a POISONOUS AND HAZARDOUS SUBSTANCE which should be handled by trained staff only.
Storage:	4 °C,-20 °C
Storage Comment:	Store as concentrated solution. Centrifuge briefly prior to opening vial. For short-term storage (1-2 weeks), store at 4°C. For long-term storage, aliquot and store at -20°C or below. Avoid multiple freeze-thaw cycles.



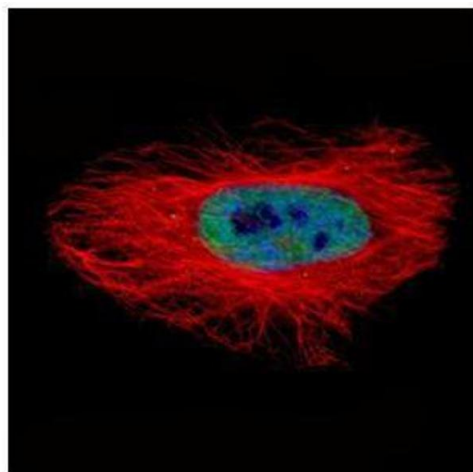
Western Blotting

Image 1. WB Image Sample (30 ug of whole cell lysate) A: HCT116 10% SDS PAGE antibody diluted at 1:1000



Immunohistochemistry

Image 2. IHC-P Image Immunohistochemical analysis of paraffin-embedded SCM1 xenograft, using ARSA, antibody at 1:500 dilution.



Immunofluorescence

Image 3. ICC/IF Image Confocal immunofluorescence analysis (Olympus FV10i) of paraformaldehyde-fixed HeLa, using ASNA1, antibody (Green) at 1:500 dilution. Alpha-tubulin filaments were labeled with (Red) at 1:2500.

Please check the [product details page](#) for more images. Overall 4 images are available for ABIN2856957.